





← 25' →

Min. Lot Width

 3 Bedrooms

 2½ Bathrooms

THE BRAVO ZLL

1600 SQ.FT.

☐ Elements Specification

☐ Elite Specification

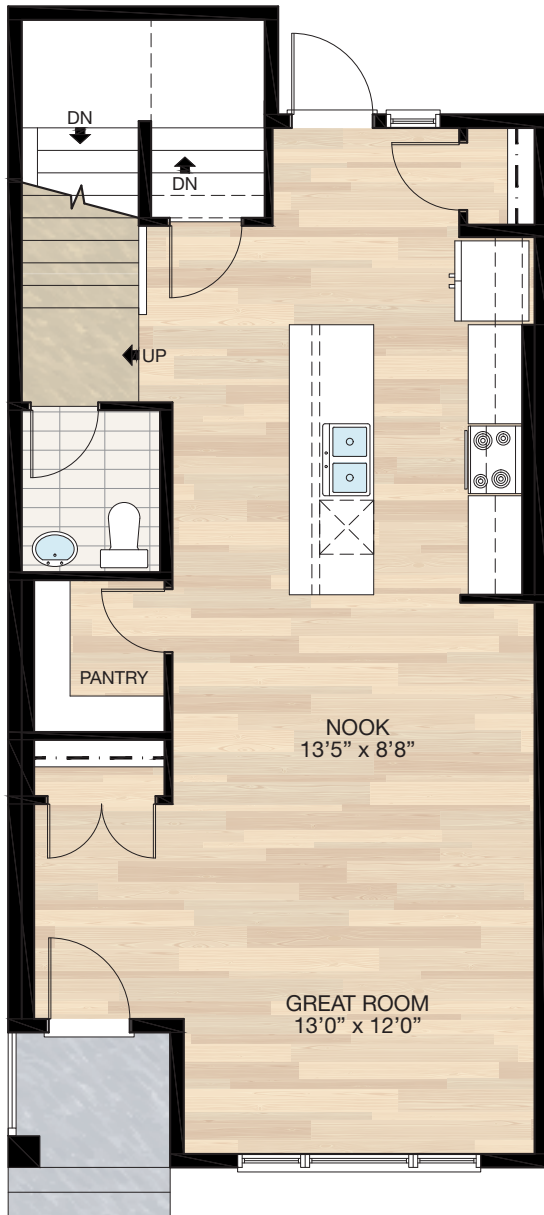


Trico Homes™

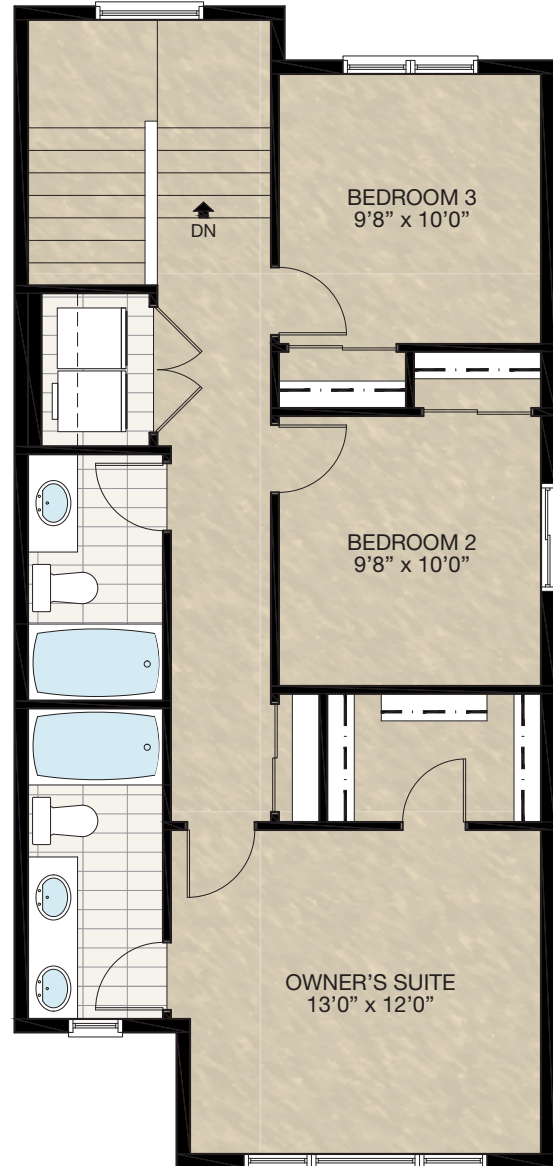
The Heart of Homebuilding®

STANDARD PLAN

THE
**BRAVO
ZLL**
1600 SQ.FT.



MAIN
790 SQ.FT.



UPPER
810 SQ.FT.

HARDWOOD

DECK

CARPET

CONCRETE

TILE

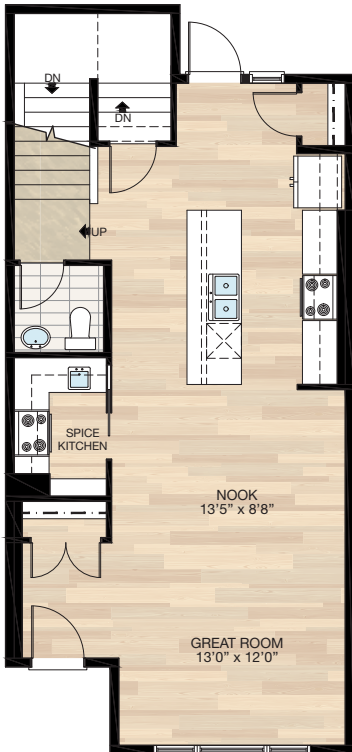
LVP

FEATURED OPTIONS



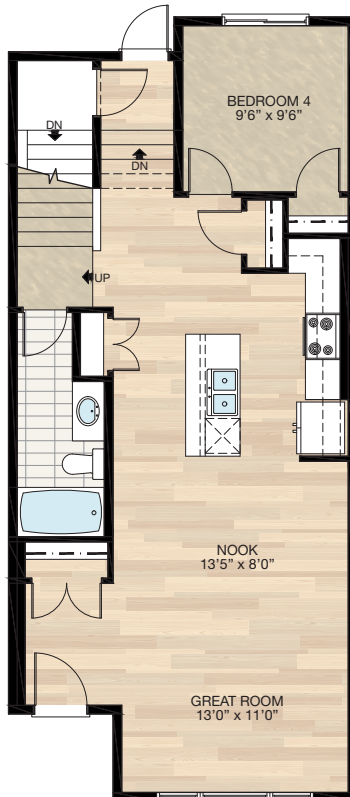
SELECT-1 SPICE KITCHEN OPTION

- Delete pantry closet
 - Reduced space at half bath & foyer
 - Add 2'8" pocket door to spice kitchen
 - Add 6 - 12" x 39" wire shelving
- *CANNOT be combined with **SELECT-2** main floor bedroom & full bath option



SELECT-2 MAIN FLOOR BEDROOM & FULL BATH OPTION

- Additional 61 sq.ft. to main floor (due to extension to rear of home)
 - Delete ½ bath
 - Delete pantry closet
 - Reduced space at foyer
 - Add 3-piece bath
 - Add pantry closet
 - Redesign kitchen with reduced island
 - Relocate rear entrance to stairwell with part of the stair developed
 - Delete 24" x 72" VSL at rear
 - Add 60" x 40" HSL window to main floor bedroom
- *CANNOT be combined with **SELECT-1** spice kitchen option



SELECT-3 BONUS ROOM OPTION

- *MUST be combined with either **SELECT-2, 6, OR 7** main floor bedroom & full bath option
- Additional 80 sq.ft. to upper floor (due to extension to rear of home)
- Side-by-side laundry closet change to stackable
- Reduced vanity at ensuite & main bath
- Reduced WIC at master suite
- Deleted linen closet
- Add 60" x 24" P window to bonus room



FEATURED BRAVO ZLL OPTIONS

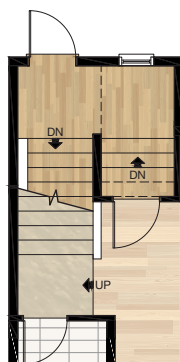
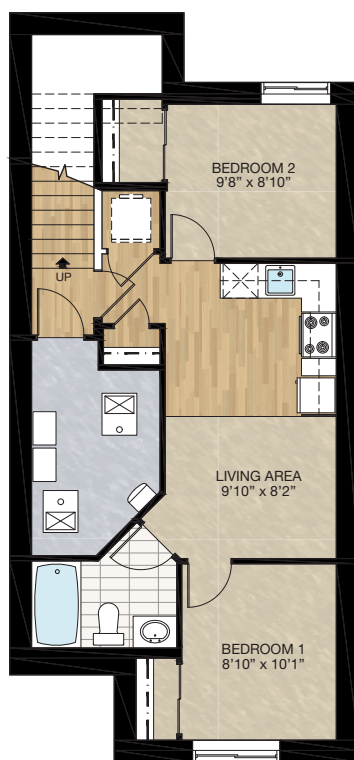


SECONDARY SUITE OPTION 1

- 545 Sq.Ft. Basement development
- Included finished basement stairwell
- Add 2'8" rear entrance door & exterior light at stairwell
- Add 24" x 60" P window at stairwell (grade dependent)
- Upgraded stairwell switches to 4-way
- Add 1 riser to stairwell for 9'0" basement ceiling (8'9" headroom clearance)
- Upgrade basement window from 60" x 24" to 60" x 36"
- Add 48" x 36" HSL window to rear
- Includes washer & dryer rough-in only
- Change stairwell switch from 3-way to 4-way

*Note: no deck above rear window well (concrete patio in lieu of wood deck)

CANNOT be combined with **SELECT-2 & 6 main floor options

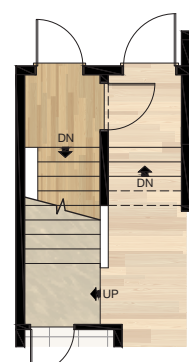
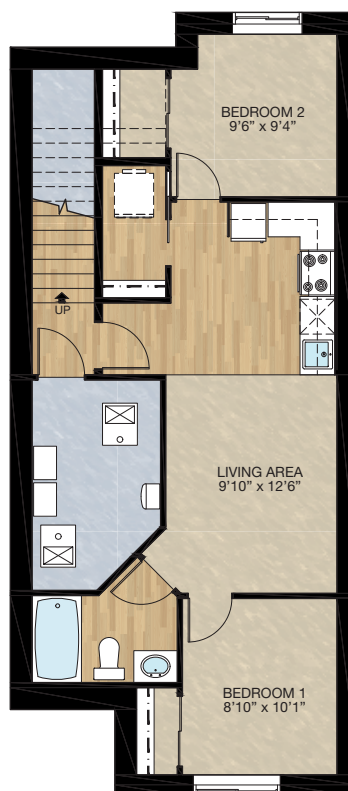


Main Floor Stair For
Secondary Suite

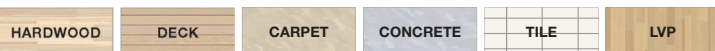
SECONDARY SUITE OPTION 2

- 618 Sq.Ft. Basement development
- Included finished basement stairwell
- Add 2'8" rear entrance door & exterior light at stairwell
- Add 1 riser to stairwell for 9'0" basement ceiling (8'9" headroom clearance)
- Upgrade basement window from 60" x 24" to 60" x 36"
- Add 48" x 36" HSL window to rear
- Includes washer & dryer rough-in only

*MUST combine with either **SELECT-2, 6, or 7** main floor option



Main Floor Stair For
Secondary Suite



FEATURED BRAVO ZLL OPTIONS

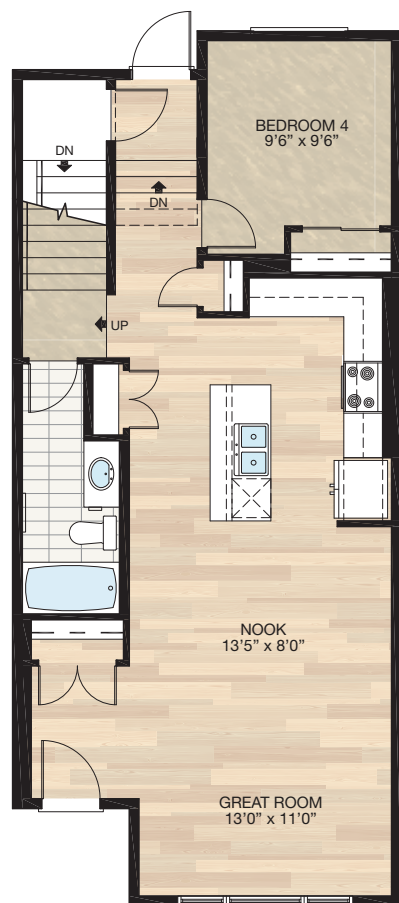


SELECT-7

MAIN FLOOR BEDROOM & FULL BATH WITH LARGER KITCHEN OPTION

- Additional 61 Sq.Ft. to main floor (due to extension to rear of home)
- Delete ½ bath
- Delete pantry closet
- Reduced space at foyer
- Add 3-piece bath
- Add pantry closet
- Redesigned kitchen with reduced island
- Relocate rear entrance to stairwell with part of the stair developed
- Delete 24" x 60" VSL at rear
- Add 60" x 40" HSL window to main floor bedroom

*CANNOT be combined with **SELECT-1** spice kitchen option



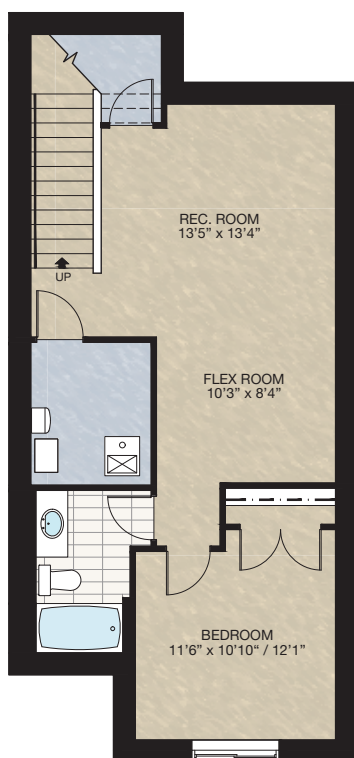
FEATURED OPTIONS

THE
**BRAVO
ZLL**
1600 SQ.FT.

SELECT-4

BASEMENT DEVELOPMENT OPTION 1

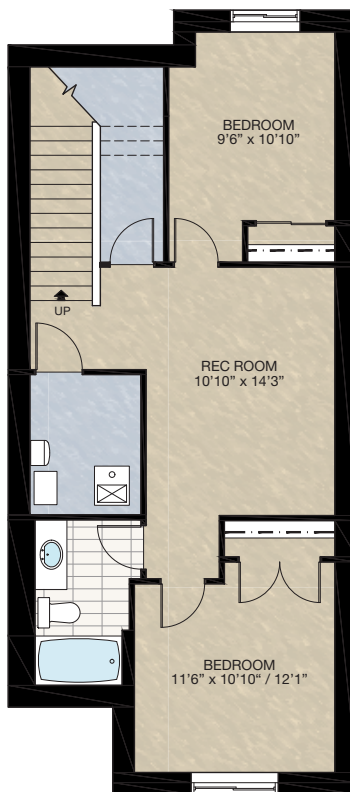
- 561 Sq.Ft. basement development
- Included finished basement stairwell
- Move 2'8" passage door from top of stairwell to mechanical room
- Add 1 riser to stairwell for 9'0" basement ceiling (8'9" headroom clearance)



SELECT-5

BASEMENT DEVELOPMENT OPTION 2

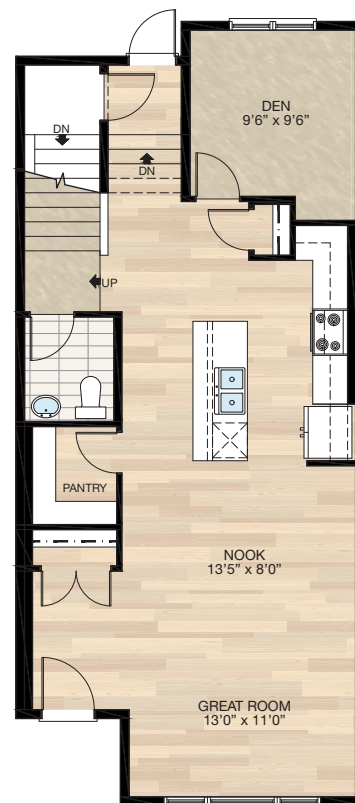
- *MUST combine with either **SELECT-2, 6, OR 7** main floor option
- 601 Sq.Ft. basement development
- Included finished basement stairwell
- Move 2'8" passage door from top of stairwell to mechanical room
- Add 1 riser to stairwell for 9'0" basement ceiling (8'9" headroom clearance)
- Add 48" x 36" window to rear



SELECT-6

MAIN FLOOR DEN OPTION

- Additional 61 sq.ft. to main floor (due to extension to rear of home)
- Redesigned kitchen with reduced island
- Relocate rear entrance to stairwell with part of the stair developed
- Delete 24" x 72" VSL at rear
- Add two 30" x 72" VSL & P/P window to den



Trico Homes is a local home builder, with new single and multi-family homes for sale in Calgary, Okotoks, Chestermere, Cochrane, Airdrie and DeWinton. Offering a great selection of starter, move-up, semi-estate and ultra-estate models in numerous communities, you'll find the house that's just right for you! Look for this model and many others in Ambleton, Belmont, Brawn Landing, Carrington, Chelsea, Chelsea Court Townhomes, Colours of Seton Townhomes, Cornerbrook, D'Arcy, Creek View, Dawson's Landing, Glacier Ridge, Hamilton Heights, Harmony, Homestead, Huxley, Legacy, Midtown, Pine Creek, Precedence, Rivercrest, Seton, Sirocco, Southbow Landing, Verona West Townhomes, West Springs, West83 Townhomes and Wolf Willow.



Renderings are artist's conceptions only and may vary by community and lot selection. Prices, floorplans, specifications and dimensions are approximate and are subject to change without notice. E.&O.E. © All rights reserved, including the right of reproduction in the whole or in part without the permission of Trico Homes.

Plan updated as of March 20, 2024.



tricohomes.com