



 ← 31' →
 Min. Lot Width

-  3 Bedroom
-  2½ Bathrooms
-  Double Garage

THE
CAMBRIDGE 26 ZLL
 2283 SQ.FT.

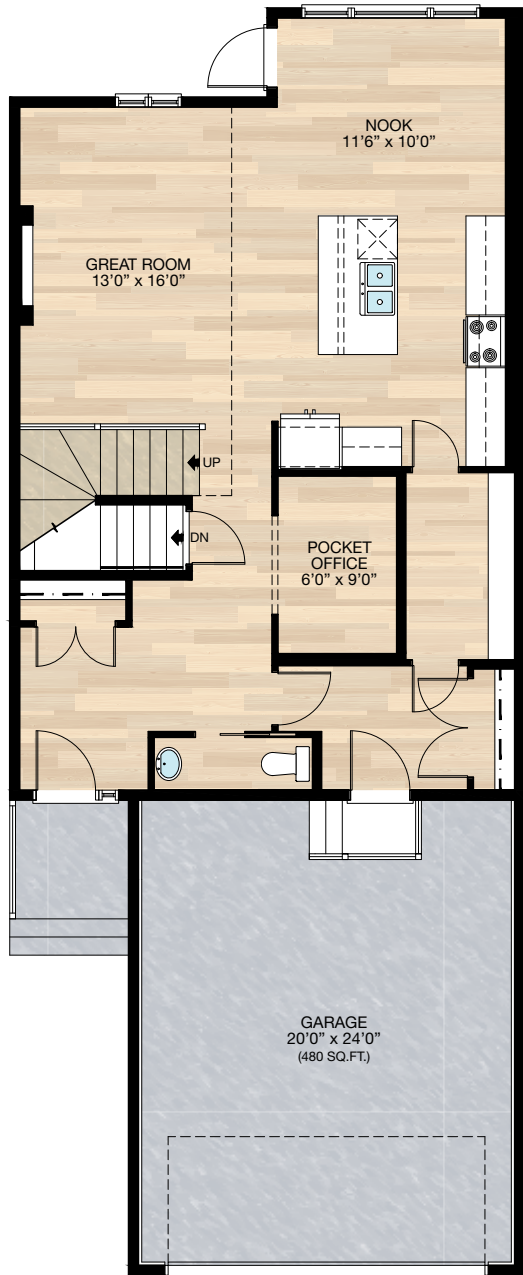
Elements Specification
 Elite Specification



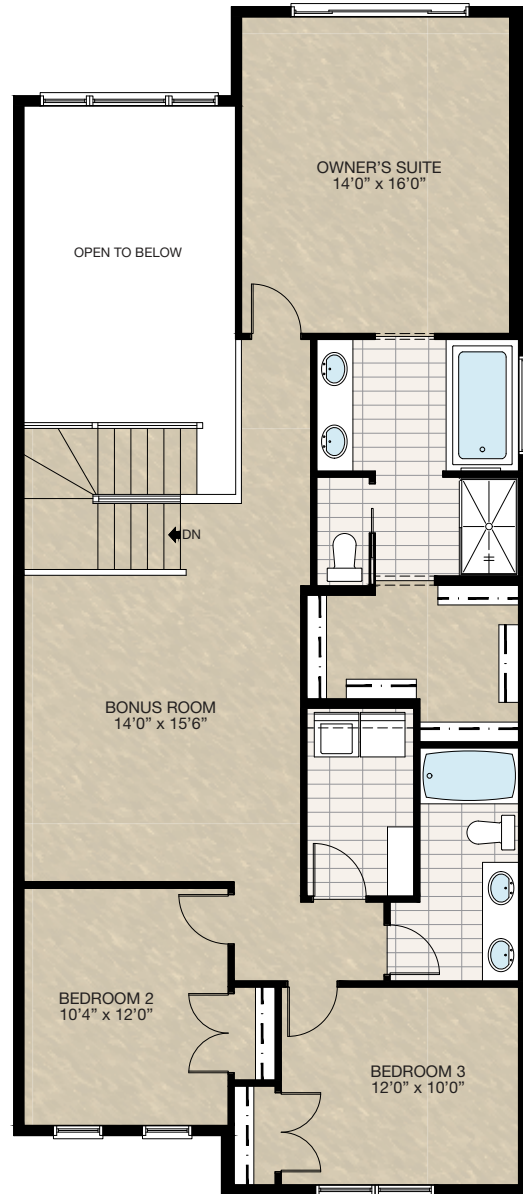
Trico Homes™
 The Heart of Homebuilding®

STANDARD PLAN

THE
CAMBRIDGE 26
ZLL
2283 SQ.FT.



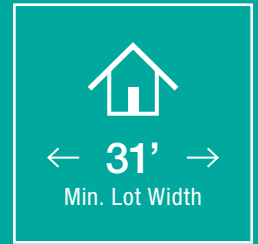
MAIN
982 SQ.FT.



UPPER
1301 SQ.FT.

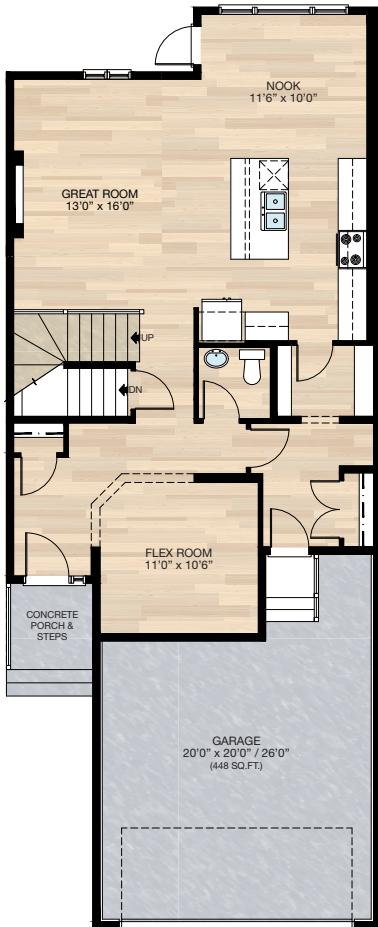


FEATURED OPTIONS



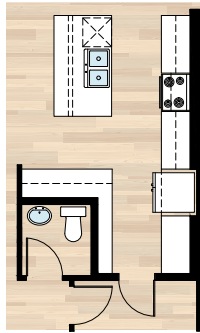
SELECT-1 FLEX ROOM OPTION

- Add 32 sq.ft.
- Delete pocket office & add flex room extending into garage 4'0"
- Relocate half bath
- Front entry closet reduced
- Revisions to foundation including post location (see **SELECT-8** Basement Development for reference)



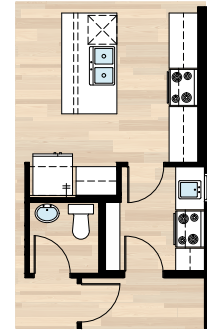
SELECT-3 KITCHEN OPTION

- MUST be combined with **SELECT-1**
- Delete pantry
- Add cabinet pantry & move fridge to exterior wall
- Additional cabinetry
- Add two pendant lights over the island



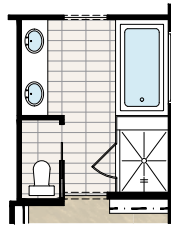
SELECT-4 SPICE KITCHEN OPTION

- MUST be combined with **SELECT-1**
- Delete one section of pantry shelves
- Add spice kitchen including range, hoodfan, sink, and additional cabinetry
- Add 24" x 40" VSL window
- Delete 2'6" door & add 2'8" door



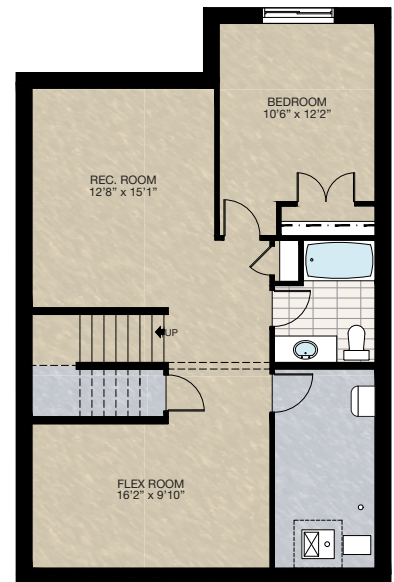
SELECT-5 GLASS & TILE SHOWER OPTION

- Delete 36" x 60" acrylic shower base with tiled walls & 6mm glass
- Add 44" x 52" tile & 10mm glass shower
- Extend tub deck 12" for shower bench



SELECT-9 BASEMENT DEVELOPMENT OPTION

- 718 Sq.Ft. basement development
- Includes finished basement stairwell
- Delete 2'8" passage door at top of stairwell
- Add 1 riser to stairwell for 9'0" basement ceiling (8'9" headroom clearance)
- Change 60" x 24" window to a 60" x 36"

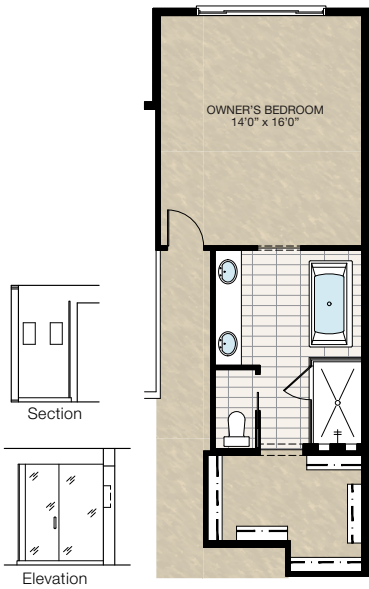


FEATURED OPTIONS

THE
CAMBRIDGE 26
ZLL
2283 SQ.FT.

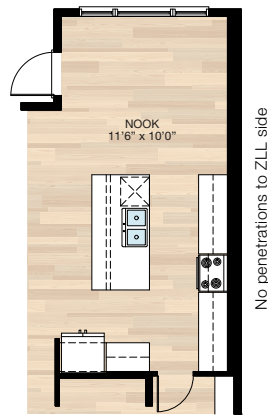
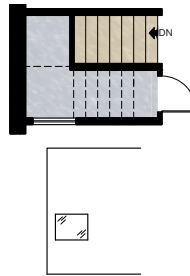
SELECT-6 NOOK / ENSUITE OPTION

- Extend nook, upper floor, & foundation 2'
- This adds 26 sq.ft. to main floor & 30 sq.ft. upper floor
- 12" is added to kitchen upper & lower cabinets as well as the island, 12" is added to the nook
- Upper floor space added to ensuite & walk-in closet
- Delete 72" x 36" soaker tub & 36" x 60" acrylic shower base with tiled walls & 6mm glass
- Add 72" x 36" free standing tub & 44" x 72" 10mm glass & tile shower with niches
- Vanity increased to 8'
- Add light over tub



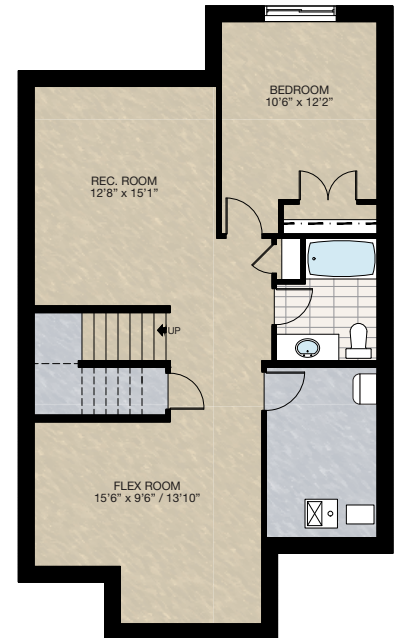
SELECT-7 PLAY SPACE OPTION

- Develop 49 sq.ft. under basement stairs
- Includes 27" x 22" interior window



SELECT-8 BASEMENT DEVELOPMENT OPTION

- 751 Sq.Ft. basement development
- Includes finished basement stairwell
- Delete 2'8" passage door at top of stairwell
- Add 1 riser to stairwell for 9'0" basement ceiling (8'9" headroom clearance)
- Change 60" x 24" window to a 60" x 36"
- Mechanical locations change
- *Can only be combined with **SELECT-1**



Trico Homes is a local home builder, with new single and multi-family homes for sale in Calgary, Okotoks, Chestermere, Cochrane, Airdrie and DeWinton. Offering a great selection of starter, move-up, semi-estate and ultra-estate models in numerous communities, you'll find the house that's just right for you! Look for this model and many others in Ambleton, Arbour Lake, Belmont, Carrington, Chelsea, Cornerbrook, D'Arcy, Dawson's Landing, Glacier Ridge, Hamilton Heights, Homestead, Legacy, Midtown, Pine Creek, Precedence, Rivercrest, Seton, Sirocco, Verona West Townhomes, West83 Townhomes and Wolf Willow.



Renderings are artist's conceptions only and may vary by community and lot selection. Prices, floorplans, specifications and dimensions are approximate and are subject to change without notice. E.&O.E. © All rights reserved, including the right if reproduction in the whole or in part without the permission of Trico Homes.

Plan updated as of October 04, 2024.



tricohomes.com