

 3 Bedrooms

 2.5 Bathrooms

 Double Garage

THE CAMBRIDGE 28 ZLL

2443 SQ.FT.

☐ Elements Specification

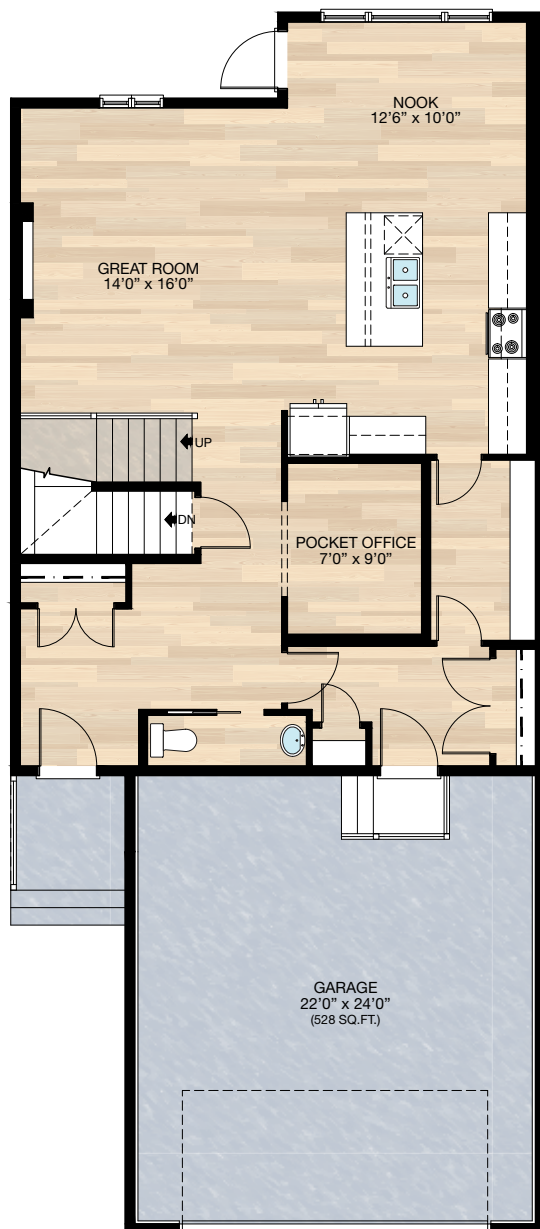
☐ Elite Specification



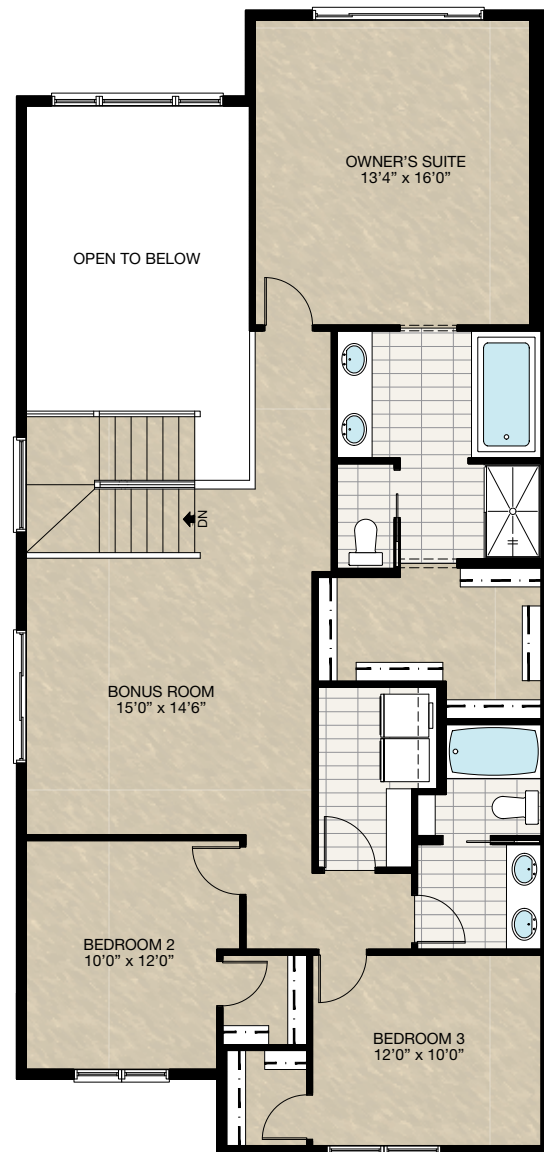
Trico Homes™
The Heart of Homebuilding®

STANDARD PLAN

THE
CAMBRIDGE ZLL
2443 SQ.FT.



MAIN
1057 SQ.FT.



UPPER
1386 SQ.FT.

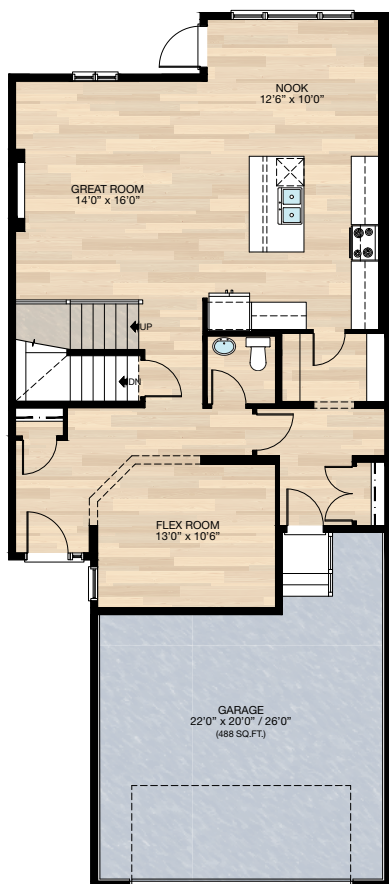


FEATURED OPTIONS



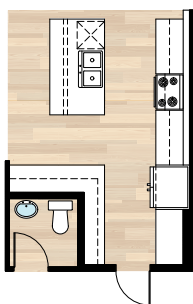
SELECT-1 FLEX ROOM OPTION

- Add 40 sq.ft.
- Delete pocket office & add flex room extending into garage 4'0"
- Relocate half bath
- Front entry closet reduced
- Add 30" x 72" VSL to flex room
- Revisions to foundation including post location (see select basement development for reference)



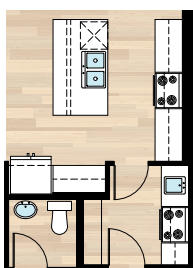
SELECT-3 KITCHEN OPTION

- Must combine with **SELECT-1** flex room option
- Delete pantry
- Add cabinet pantry & move fridge to exterior wall
- Additional cabinetry
- Add to pendant lights over the island

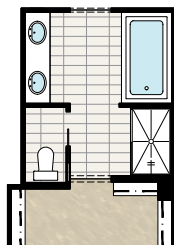


SELECT-4 SPICE KITCHEN OPTION

- Must combine with **SELECT-1**
- Delete one section of pantry shelves
- Add spice kitchen including range, hoodfan, sink & additional cabinetry
- Delete 2'6" door & add 2'8" door

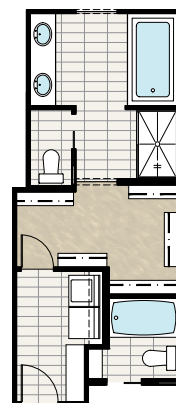


- Changes required for upper floor with **SELECT-4**
- Void space added to master closet



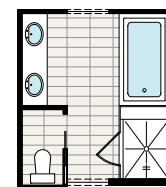
SELECT-5 ACCESS TO LAUNDRY FROM WALK-IN CLOSET

- Delete 28" of closet shelving
- Add 2'4" door
- Add two 3-way switches



SELECT-6 GLASS & TILE SHOWER

- Delete fiberglass shower
- Add 44" x 52" tile & 10mm glass shower
- Extend tub deck 12" for shower bench



HARDWOOD

DECK

CARPET

CONCRETE

TILE

LVP

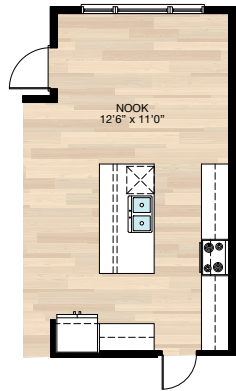
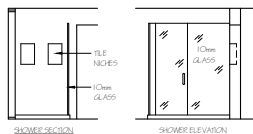
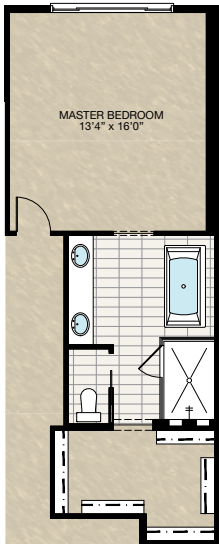
FEATURED OPTIONS

THE
CAMBRIDGE ZLL
2443 SQ.FT.

SELECT-9

NOOK / ENSUITE OPTION

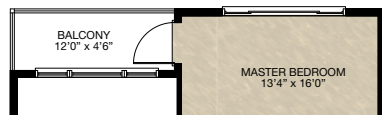
- Extend nook, upper floor & foundation 2'
- This adds 28 sq.ft. to main Floor & 32 sq.ft.
- 12" Is added to kitchen upper and lower cabinets as well as the island. 12" Is added to the nook
- Upper floor spaced added to ensuite & walk-in closet
- Delete 60" x 36" soaker tub & 36" x 60" fiberglass shower
- Add 72" x 36" free standing tub & 48" x 72" 10mm glass & tile shower with niches
- Add light over tub



SELECT-10

MASTER BALCONY

- Add 12'0" x 4'6" balcony off master bedroom
- Includes vinyl decking, aluminum railing, & soffit to underside of balcony
- Add 2'8" full french door, water proof ply, & exterior light with switch
- Main floor exterior light deleted & 2 down lights added
- 6" x 6" pressure treated post & concrete wing wall needed for balcony support - post finishing material subject to elevation & A/C Guidelines



Trico Homes is a local home builder, with new single and multi-family homes for sale in Calgary, Okotoks, Chestermere, Cochrane, Airdrie and DeWinton. Offering a great selection of starter, move-up, semi-estate and ultra-estate models in numerous communities, you'll find the house that's just right for you! Look for this model and many others in Ambleton, Arbour Lake, Belmont, Carrington, Chelsea, Cornerbrook, D'Arcy, Dawson's Landing, Glacier Ridge, Hamilton Heights, Homestead, Legacy, Midtown, Pine Creek, Precedence, Rivercrest, Seton, Sirocco, Verona West Townhomes, West83 Townhomes and Wolf Willow.



Renderings are artist's conceptions only and may vary by community and lot selection. Prices, floorplans, specifications and dimensions are approximate and are subject to change without notice. E.&O.E. © All rights reserved, including the right if reproduction in the whole or in part without the permission of Trico Homes.

Plan updated as of October 04, 2024.



tricohomes.com