



← 29' →

Min. Lot Width

 3 Bedrooms

 2½ Bathrooms

 Double Garage

THE HARRINGTON ZLL

2111 SQ.FT.

☐ Elements Specification

☐ Elite Specification

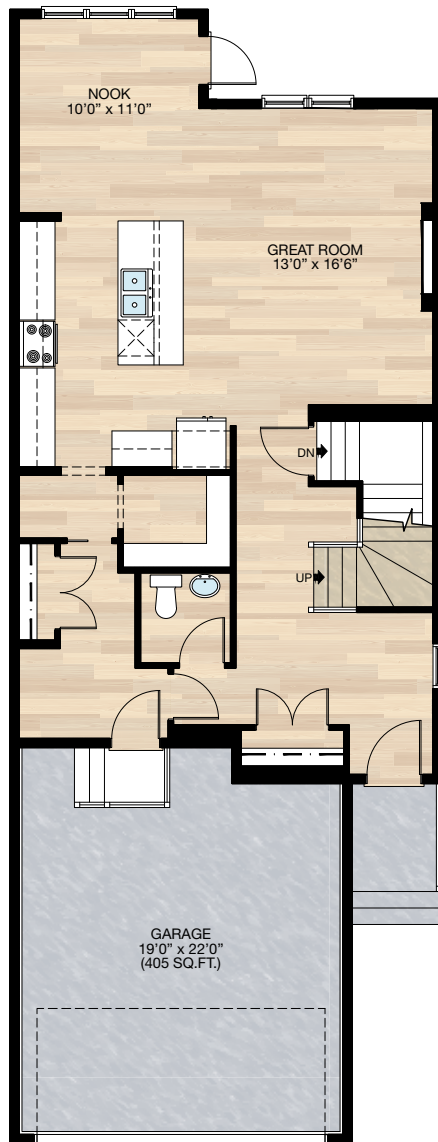


Trico Homes™

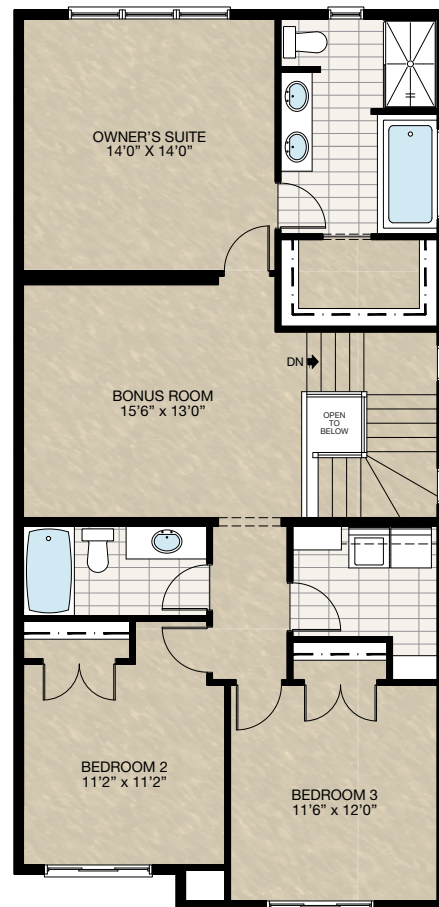
The Heart of Homebuilding®

STANDARD PLAN

THE
HARRINGTON
ZLL
2111 SQ.FT.



MAIN
951 SQ.FT.



UPPER
1169 SQ.FT.

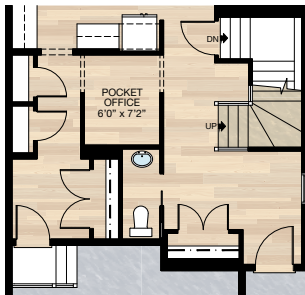


FEATURED OPTIONS

← 29' →
Min. Lot Width

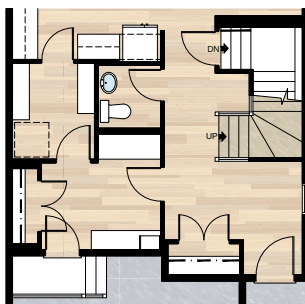
SELECT-1 POCKET OFFICE OPTION

- Redesign pantry, mudroom & half bath to create pocket office
- Add pantry closet & broom closet

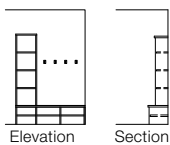


SELECT-2 MUDROOM OPTION

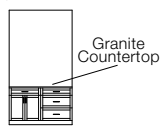
- Redesign pantry, mudroom & half bath
- Add MDF bench with cubbies & drop zone



MDF Bench Detail

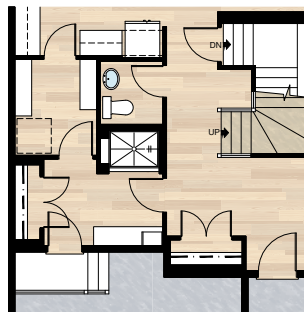


Drop Zone Detail

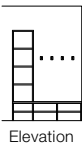


SELECT-3 MUDROOM OPTION

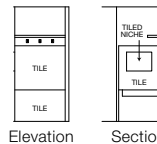
- Redesign pantry, mudroom & half bath
- Add MDF bench with cubbies
- Add raised dog shower



MDF Bench Detail

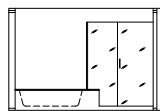
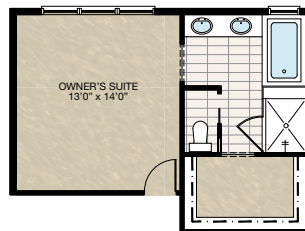


Dog Shower Detail



SELECT-4 ENSUITE OPTION

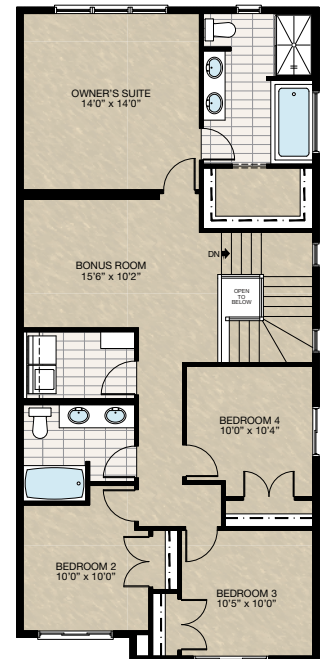
- Includes 10mm glass & tile shower
- Add 30" x 40" frosted window & 48" x 40" frosted window
- Delete 60" x 40" frosted window & 24" x 40" frosted window
- Increase vanity to 6'2.5"
- Includes pocket door to water closet



Tile & Glass Ensuite Shower Detail

SELECT-5 FOUR BEDROOM & BONUS ROOM OPTION

- Extend front 2'0" which adds 48 sq.ft.
- Redesign upper floor adding a fourth bedroom



HARDWOOD

DECK

CARPET

CONCRETE

TILE

LVP

tricohomes.com

FEATURED HARRINGTON ZLL OPTIONS

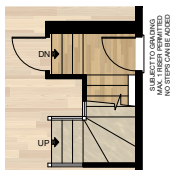
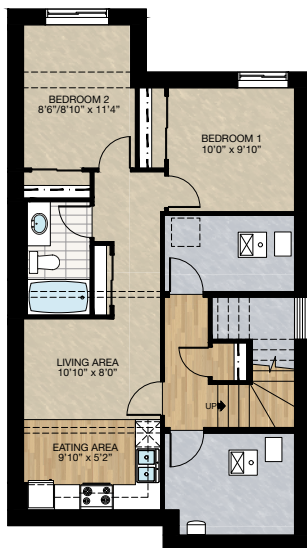


SECONDARY SUITE OPTION

- 628 Sq.Ft. developed area
- Include finished basement stairwell
- Add 1 riser to stairwell for 9'0" basement ceiling (8'9" headroom clearance)
- Added 2'8" side entrance door & exterior light
- Include washer & dryer rough-in only
- Add 48" x 36" HSL to rear

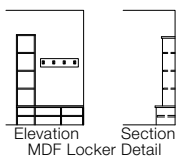
*MUST delete main floor fireplace cantilever

**This option only available for long side zero & subject to grading, one riser permitted only.



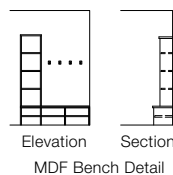
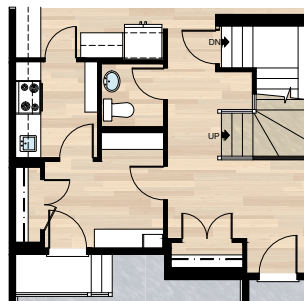
SELECT-13C MDF LOCKERS OPTION

- Must be combined with SELECT-13A or 13B



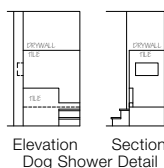
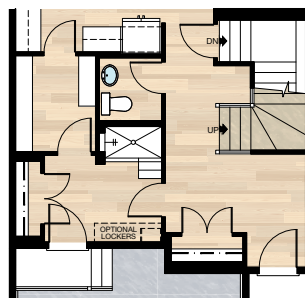
SELECT-11 SPICE KITCHEN & MUDROOM OPTION

- Redesign pantry, mudroom & half bath
- Add wire shelving & MDF bench to mudroom
- Remove 2" x 8" mech. wall for hood fan venting at upper floor between master bedroom & bonus room
- Add 2" x 8" wall for hood fan venting at bonus room exterior wall or add additional mech. void space in master closet if combine with SELECT-6 FOUR BEDROOM option
- Add stove, sink, cabinetry & shelving to spice kitchen



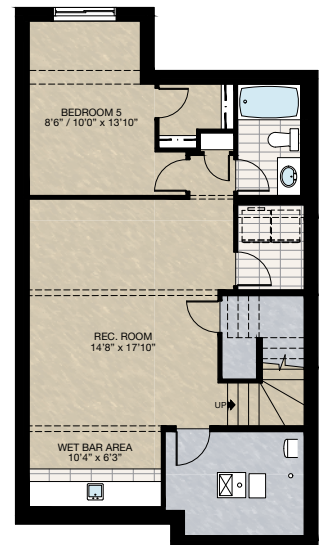
SELECT-13A DOG SHOWER WITH TILE STUB WALL

- Redesign pantry, mudroom & half bath
- Add dog shower



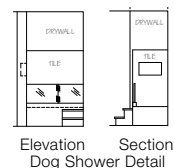
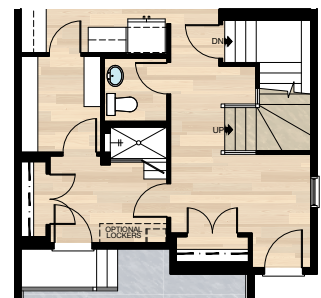
SELECT-12 BASEMENT DEVELOPMENT OPTION

- 683 Sq.Ft. developed area
- Add extra riser to stairwell for 9'0" basement ceiling with 8'9" headroom clearance
- Include finished basement stairwell
- Delete 2'8" door top of stairwell
- Include laundry room with washer & dryer rough-in only & 12" wire shelf above
- Add 10'6" wet bar with lower cabinetry & laminate countertop & bar sink with one row of 12" tile flooring



SELECT-13B DOG SHOWER WITH GLASS DOOR

- Redesign pantry, mudroom & half bath
- Add dog shower



HARDWOOD

DECK

CARPET

CONCRETE

TILE

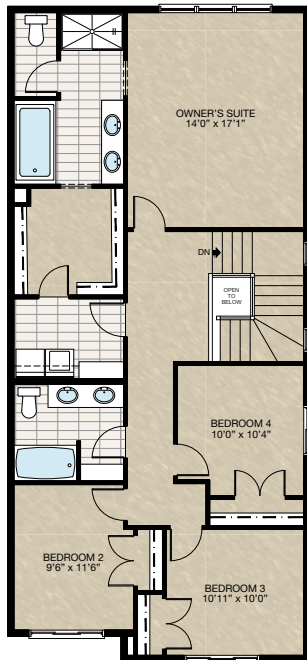
LVP

FEATURED OPTIONS

THE
HARRINGTON
ZLL
2111 SQ.FT.

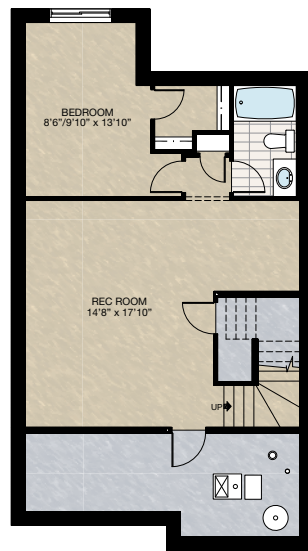
SELECT-6 FOUR BEDROOM OPTION

- Extend front 2'0" which adds 48 sq.ft.
- Redesign upper floor adding a fourth bedroom & deleting bonus room



SELECT-7 BASEMENT DEVELOPMENT OPTION

- 608 Sq.Ft. developed area
- Add extra riser to stairwell for 9'0" basement ceiling with 8'9" headroom clearance
- Include finished basement stairwell
- Delete 2'8" door top of stairwell
- 60" x 24" Window changed to 60" x 36"



SELECT-9 BEVERAGE FRIDGE OPENING OPTION

- Add lower cabinet



SELECT-10 DROP ZONE IN FLEX SPACE OPTION

- Add drop zone cabinets



Trico Homes is a local home builder, with new single and multi-family homes for sale in Calgary, Okotoks, Chestermere, Cochrane, Airdrie and DeWinton. Offering a great selection of starter, move-up, semi-estate and ultra-estate models in numerous communities, you'll find the house that's just right for you! Look for this model and many others in Ambleton, Belmont, Brawn Landing, Carrington, Chelsea, Chelsea Court Townhomes, Colours of Seton Townhomes, Cornerbrook, D'Arcy, Creek View, Dawson's Landing, Glacier Ridge, Hamilton Heights, Harmony, Homestead, Huxley, Legacy, Midtown, Pine Creek, Precedence, Rivercrest, Seton, Sirocco, Southbow Landing, Verona West Townhomes, West Springs, West83 Townhomes and Wolf Willow.



Renderings are artist's conceptions only and may vary by community and lot selection. Prices, floorplans, specifications and dimensions are approximate and are subject to change without notice. E.&O.E. © All rights reserved, including the right if reproduction in the whole or in part without the permission of Trico Homes.

Plan updated as of March 20, 2024.



tricohomes.com