

- 3 Bedrooms
- 2½ Bathrooms
- Double Garage

THE
OXFORD II ZLL
2067 SQ.FT.

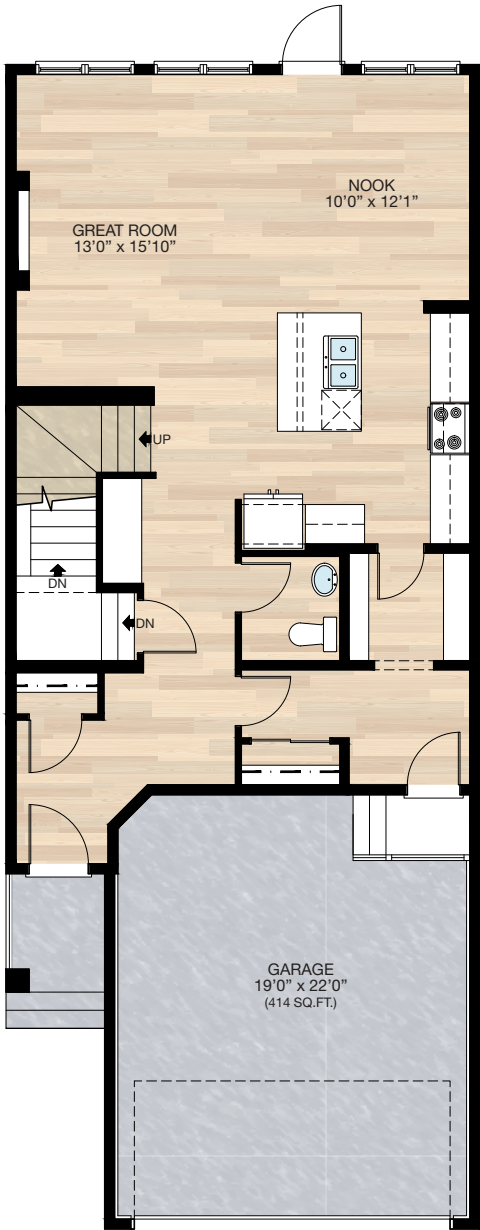
☐ Elite Specification



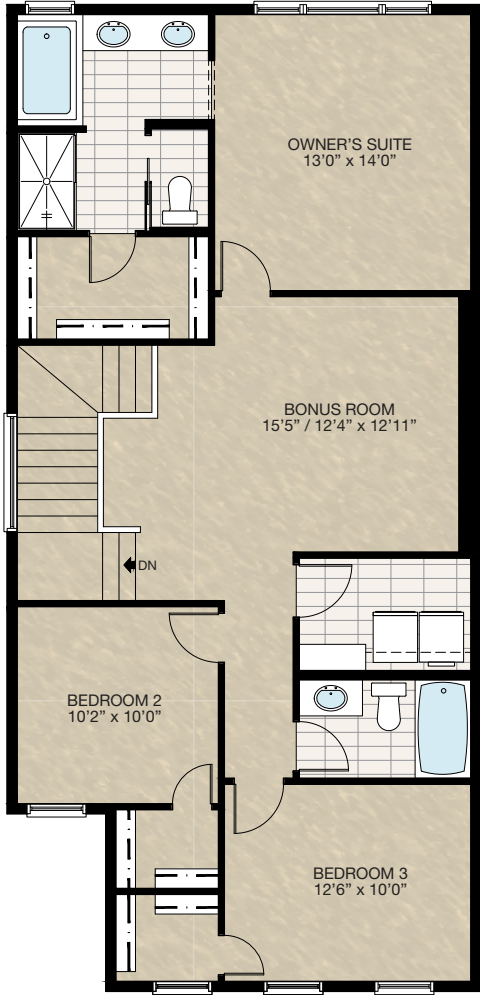
Trico Homes™
The Heart of Homebuilding®

STANDARD PLAN

THE
OXFORD II
ZLL
2067 SQ.FT.



MAIN
912 SQ.FT.



UPPER
1155 SQ.FT.

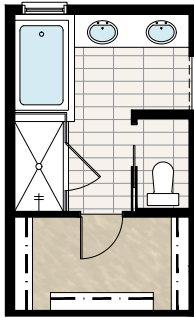
HARDWOOD	DECK	CARPET	CONCRETE	TILE	LAMINATE	LINO
----------	------	--------	----------	------	----------	------

FEATURED OPTIONS



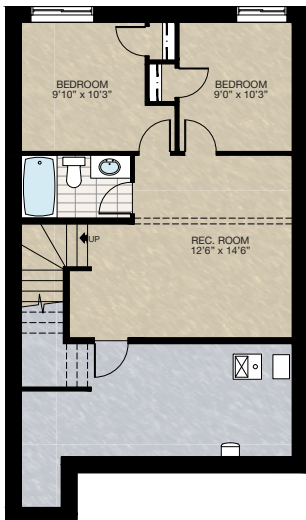
SELECT-1 ENSUITE OPTION

- Delete standard 36" x 60" acrylic shower
- Add 36" x 60" tiled shower with 10mm glass
- Extend tub tiled ledge by 3.5" next to shower
- Relocate towel bar



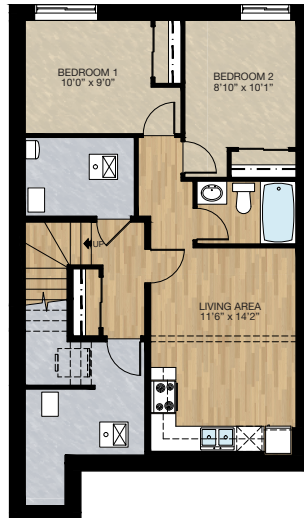
SELECT-2 BASEMENT DEVELOPMENT OPTION

- 547 Sq.Ft. basement development
- Included finished basement stairwell
- Add 1 risers to stairwell for 9'0" basement ceiling (8'9" headroom clearance)
- Upgraded 60" x 24" DHSL to 60" x 36" DHSL
- Add 48" x 36" DHSL window
- Relocate 2'8" passage door from top of stairwell to mechanical room



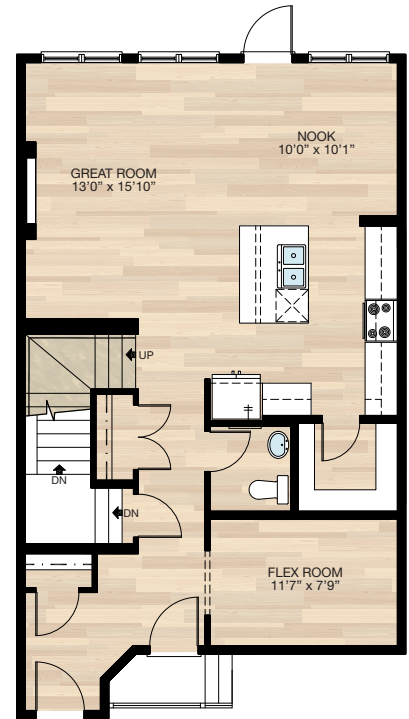
TWO BEDROOMS SECONDARY SUITE OPTION

- 608 Sq.Ft. basement development
- Included finished basement stairwell
- Add 1 risers to stairwell for 9'0" basement ceiling (8'9" headroom clearance)
- Include washer & dryer rough-in only
- Second Furnace & HRV added to accommodate secondary suite
- Add 48" x 36" DHSL window to rear
- Upgrade existing window 60" x 24" DBSL to 60" x 36" DBSL



SELECT-4 MAIN FLOOR FLEX ROOM

- Delete built-in MDF desk + convert to closet (add 2 - 2'0" passage doors)
- Relocate kitchen half bath & pantry 2'0" into nook
- Close off wall opening + dropped bulkhead from pantry into mudroom
- Add shelving to pantry
- Delete passage door & closet in mudroom
- Add wall opening + dropped bulkhead to flex room



NO PENETRATIONS WHATSOEVER TO ZERO LOT LINE SIDE

HARDWOOD

DECK

CARPET

CONCRETE

TILE

LAMINATE

LINO

tricohomes.com

THE
OXFORD II
ZLL
2067 SQ.FT.



Trico
Homes™

The Heart of Homebuilding®

