



← 25' →

Min. Lot Width

 3 Bedrooms

 2½ Bathrooms

THE RAEYA ZLL

1802 SQ.FT.

☐ Elements Specification

☐ Elite Specification

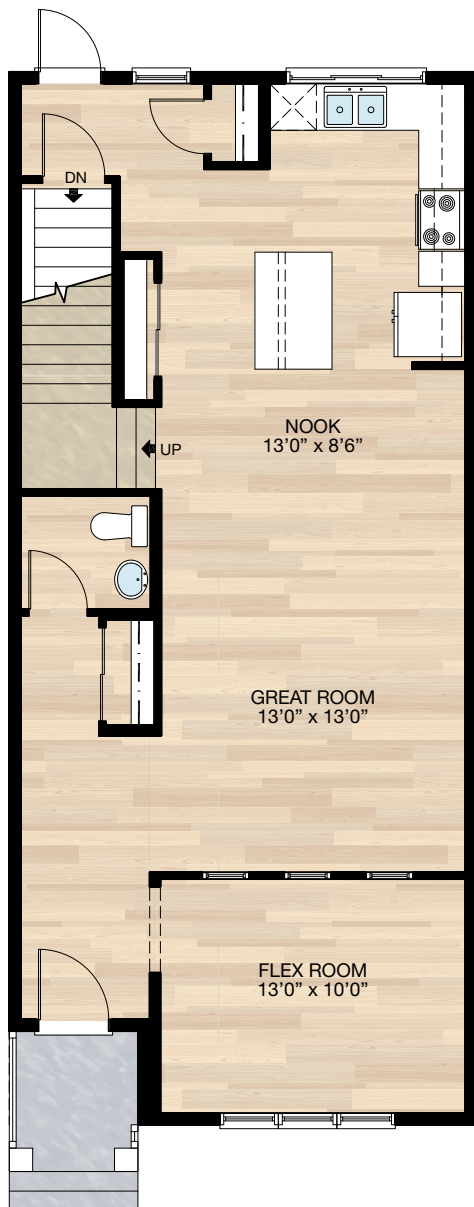


Trico Homes™

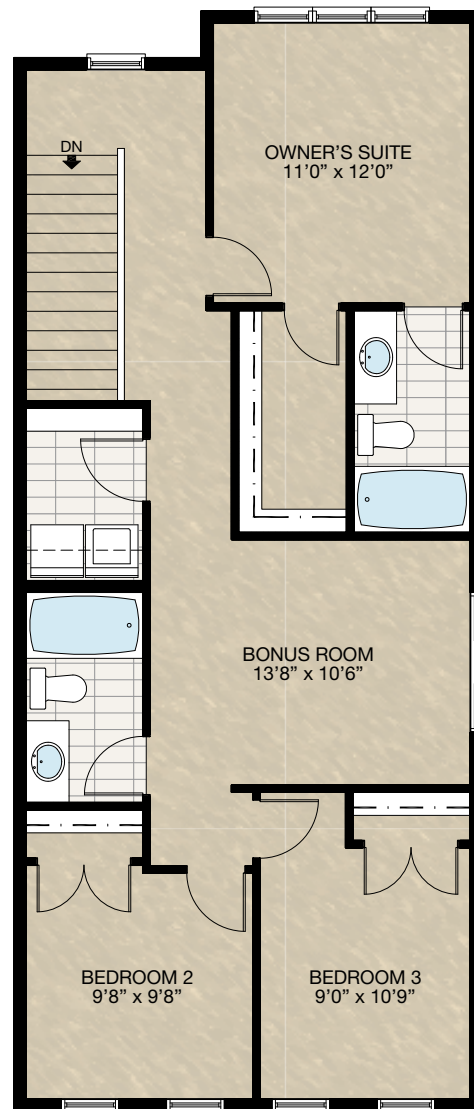
The Heart of Homebuilding®

STANDARD PLAN

THE
RAEYA ZLL
1802 SQ.FT.



MAIN
878 SQ.FT.



UPPER
924 SQ.FT.

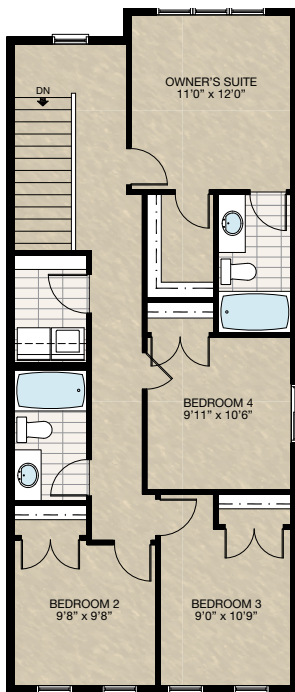


FEATURED OPTIONS



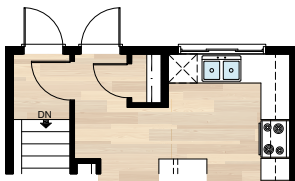
☐ **SELECT-1** 4 BEDROOM UPPER FLOOR OPTION

- Delete bonus room & add fourth bedroom
- Delete 72" x 20" window, add 48" x 48" window
- This reduces the depth of the master walk-in closet
- Add one light to the hallway on existing switch



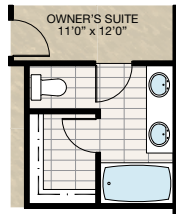
☐ **SELECT-2** REAR BASEMENT ENTRANCE OPTION

- Delete 30" x 72" window
- Add standard 2'8" exterior door
- Move basement door
- Add light to rear landing (using existing switch)
- Add exterior light & switch



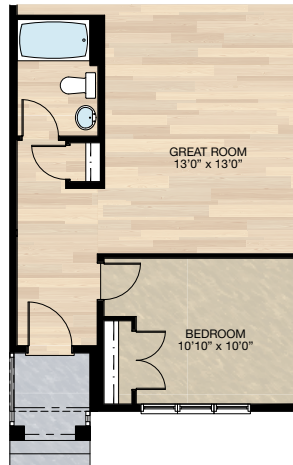
☐ **SELECT-3** ALTERNATE ENSUITE OPTION

- Add 24" of vanity & second sink
- Add 2 lights to existing switch



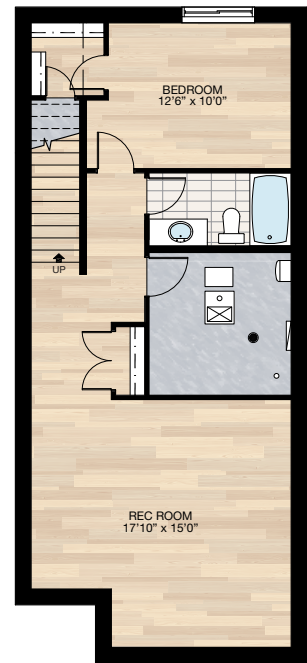
☐ **SELECT-4** MAIN FLOOR FULL BATH OPTION

- Add standard tub/shower unit to half bath
- Delete 4'0" bypass door & replace with 2'4" swing door
- Flex room becomes bedroom with two 2'0" swing doors & closet
- Delete three 24" x 24" interior windows



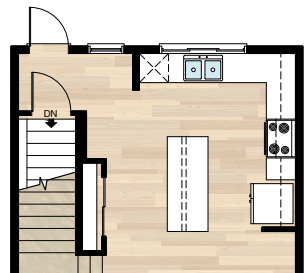
☐ **SELECT-5** BASEMENT DEVELOPMENT OPTION

- 648 Sq.ft. basement development
- Included finished basement stairwell
- Delete 2'8" passage door top of stairwell
- Add one riser to stairwell for 9'0" basement ceiling (8'9" headroom clearance)
- Reduce length of bearing wall & strip footing & add dropped beam
- 60" x 24" Window changed to 60" x 36"



☐ **SELECT-6** ALTERNATE KITCHEN OPTION

- Delete rear closet
- Add 2' x 6' mech wall by stairs
- Extend lower cabinets 2'4"
- Extend island 18"
- Re-center window, sink, dishwasher & lights

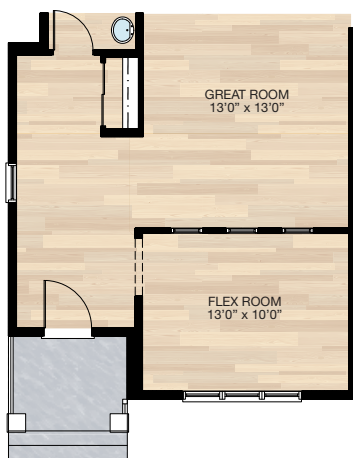


FEATURED RAEYA ZLL OPTIONS

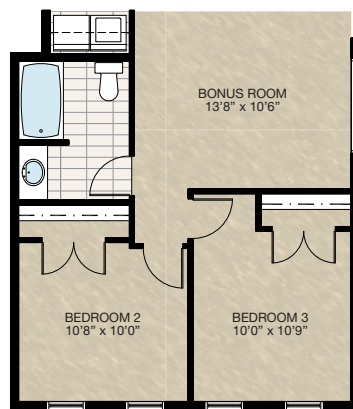


SELECT-8 WIDER ENTRY OPTION

- Widen entry & upper floor 2'
- Adds 37 sq.ft. to main floor
- Adds 45 sq.ft. to upper floor
- Redesign main bath



Main Floor

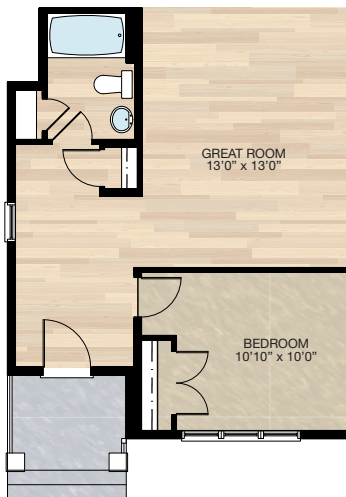


Upper Floor



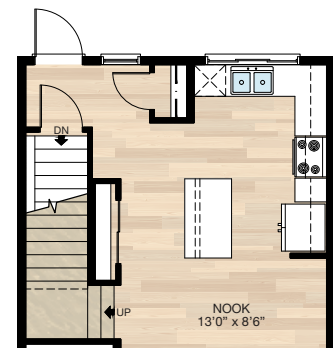
SELECT-8 COMBINED WITH SELECT-4

- Add linen closet to full bath



SELECT-9 KITCHEN ISLAND OPTION

- Change island eating bar from 12" to 8" deep
- Additional depth to island cabinet base from 18" to 24"

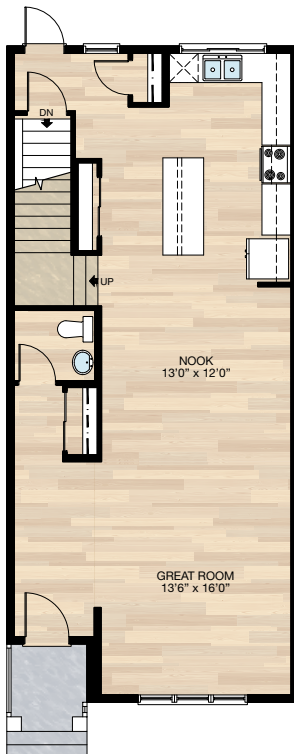


FEATURED OPTIONS

THE
RAEYA ZLL
1802 SQ.FT.

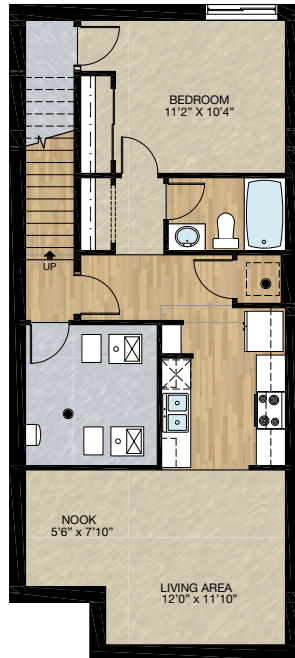
☐ SELECT-7 DELETE FLEX ROOM OPTION

- Delete front flex room
- Additional 3'9½" of upper and lower cabinets
- Extend island 20"
- Adjust nook and great room sizes, flooring & lighting locations



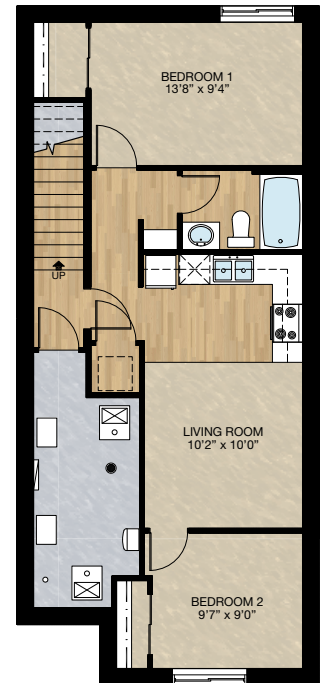
☐ SECONDARY SUITE OPTION 1

- 636 Sq.Ft. of basement development
- Included finished basement stairwell
- Add 2 risers to stairwell for 9'0" basement ceiling (8'9" headroom clearance)



☐ SECONDARY SUITE OPTION 2 (MUST COMBINE WITH SELECT 2 OPTION)

- 637 Sq.Ft. basement development
- Included finished basement stairwell
- Add 2 risers to stairwell for 9'0" basement ceiling (8'9" headroom clearance)



Trico Homes is a local home builder, with new single and multi-family homes for sale in Calgary, Okotoks, Chestermere, Cochrane, Airdrie and DeWinton. Offering a great selection of starter, move-up, semi-estate and ultra-estate models in numerous communities, you'll find the house that's just right for you! Look for this model and many others in Ambleton, Belmont, Brawn Landing, Carrington, Chelsea, Chelsea Court Townhomes, Colours of Seton Townhomes, Cornerbrook, D'Arcy, Creek View, Dawson's Landing, Glacier Ridge, Hamilton Heights, Harmony, Homestead, Huxley, Legacy, Midtown, Pine Creek, Precedence, Rivercrest, Seton, Sirocco, Southbow Landing, Verona West Townhomes, West Springs, West83 Townhomes and Wolf Willow.



Renderings are artist's conceptions only and may vary by community and lot selection. Prices, floorplans, specifications and dimensions are approximate and are subject to change without notice. E.&O.E. © All rights reserved, including the right of reproduction in the whole or in part without the permission of Trico Homes.

Plan updated as of March 20, 2024.



tricohomes.com