

THE RAEYA ZLL

1,824 SQ.FT.

huxley

135 Huxland Drive NE

3 Bedrooms ▲ 3 Bathrooms

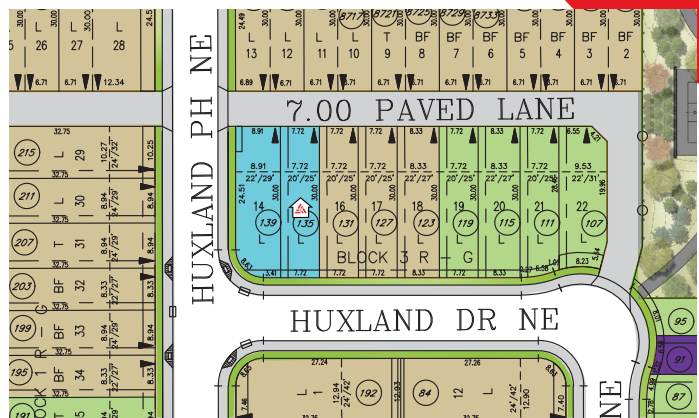
IMMEDIATE POSSESSION



SHOWHOME
LEASEBACK

OPTIONS INCLUDED IN THIS HOME:

- South facing homesite near green space, recreation area & walking distance to a future school
- 2 Bedroom secondary legal suite
- Main floor flex room & full bath
- 42" Upper cabinetry & crown moulding in kitchen
- Quartz kitchen countertops
- 3 Bedrooms & central bonus room on upper floor
- Full laundry room
- Separate rear entrance to basement
- 10' x 10' Rear deck with stairs to grade



Plus
RECEIVE YOUR OWN
TRICO RED CARD



& ENJOY INCREDIBLE ONGOING SAVINGS & REWARDS FROM OUR PARTNERS & RETAILERS

VISIT OUR SHOWHOMES

135 & 139 Huxland Drive NE
Calgary, AB



THE RAEYA



THE BRAVO

Showhome Hours:

MON - THURS: 2PM - 8PM
FRI: Closed
SAT - SUN: 12PM - 5PM

Contact Sam Bibanco

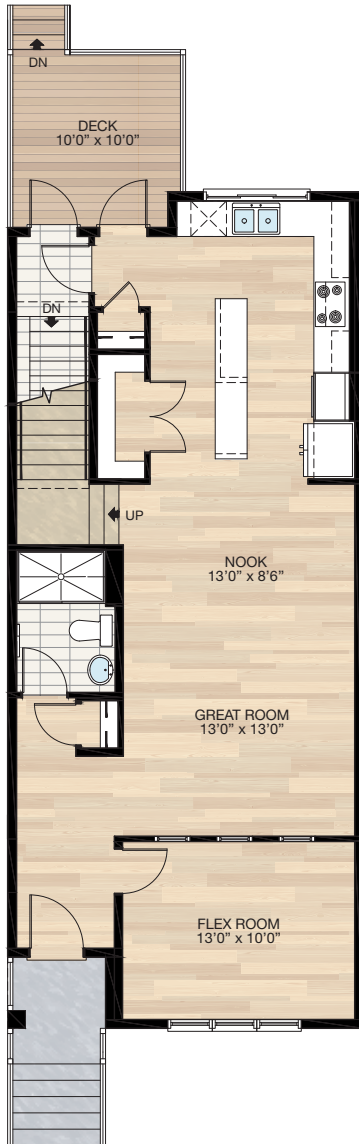
CALL: 403.452.1327 | EMAIL: sambibanco@tricohomes.com



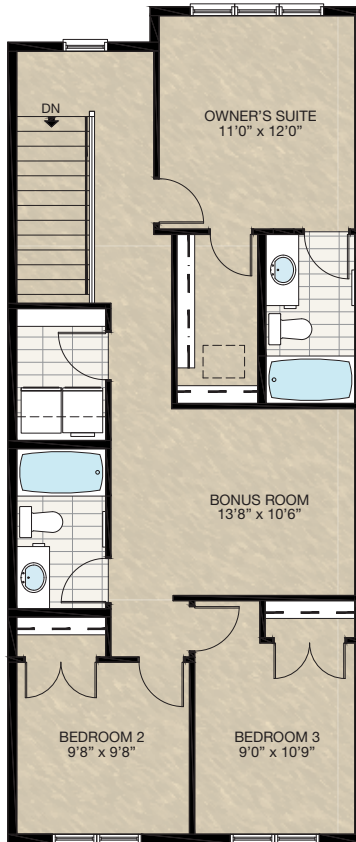
Trico Homes™

tricohomes.com

MAIN
900 SQ.FT.



UPPER
924 SQ.FT.



SECONDARY SUITE
652 SQ.FT.



Renderings are artist's conceptions only and may vary by community and lot selection. Prices, floorplans, specifications and dimensions are approximate and are subject to change without notice. E.&O.E. © All rights reserved, including the right if reproduction in the whole or in part without the permission of Trico Homes. Plan updated April 8, 2026.



tricohomes.com