

THE CONCORD ZLL

2,312 SQ.FT.



19829 44 Street SE

4 Bedrooms ▲ 3 Bathrooms ▲ Double Garage

MARCH POSSESSION

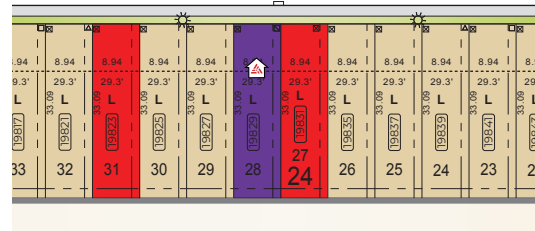


OPTIONS INCLUDED IN THIS HOME

- Homesite with a west-facing backyard
- Main floor bedroom & full bathroom
- 42" Upper cabinetry & crown moulding in kitchen
- Walk-through pantry
- Built-in appliances & chimney hood fan
- Upgraded cabinets, countertops, tile & flooring
- Electric fireplace in great room
- Upgraded light fixtures
- Central bonus room & full laundry on upper floor
- 5-Piece owner's ensuite with glass & tile shower
- Secondary bedrooms each with walk-in closets
- 3-Piece rough-in in basement
- Rear deck with stairs to grade & gas line to deck
- Separate side entrance
- 9' Foundation

25.3'	25.3'	25.3'	25.3'	25.3'	25.3'	25.3'	25.3'	25.3'	25.3'	25.3'	25.3'	25.3'	25.3'
7.72	7.72	7.72	7.72	7.72	7.72	7.72	7.72	7.72	7.72	7.72	7.72	7.72	7.72

44 STREET SE



Plus
RECEIVE YOUR OWN
TRICO RED CARD



AND ENJOY INCREDIBLE ONGOING SAVINGS AND REWARDS FROM OUR PARTNERS AND RETAILERS

VISIT OUR SHOWHOME

19747 & 19749, 44 Street SE
Calgary AB



SHOWHOME THE ARIA

Showhome hours:
MON - THURS: 2 - 8PM
FRI: Closed
SAT - SUN: 12 - 5PM



tricohomes.com

Contact Devin Sloan
CALL: 403.460.4211
EMAIL: devinsloan@tricohomes.com

BUILDING IN 31 COMMUNITIES:
FRONT-GARAGE HOMES | LANED HOMES | DUPLEXES | TOWNHOMES | CONDOS

THE CONCORD ZLL

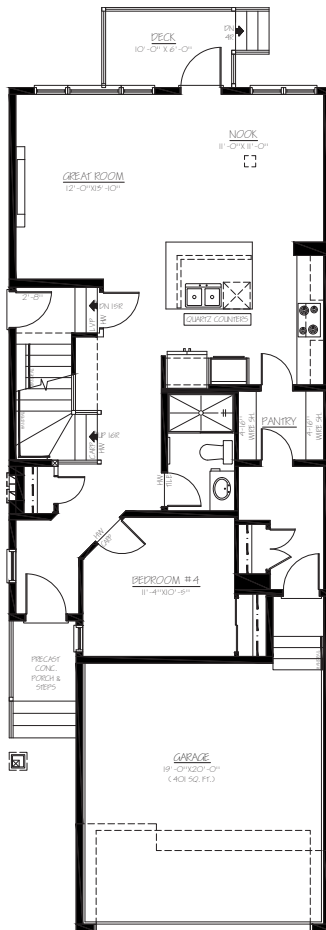
2,312 SQ.FT.



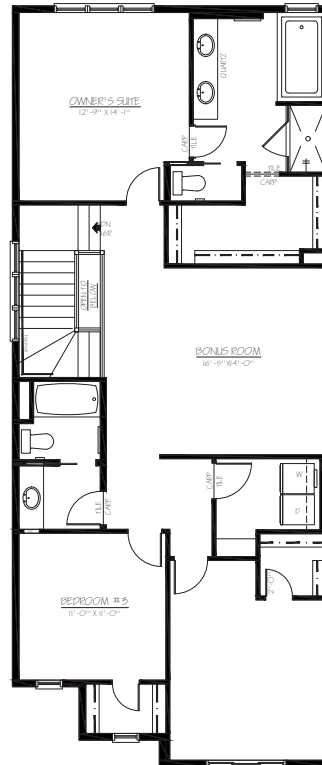
19829 44 Street SE

4 Bedrooms ▲ 3 Bathrooms ▲ Double Garage

MARCH POSSESSION



MAIN
995 SQ.FT



UPPER
1317 SQ.FT



Platinum member
2004 - 2025

Top-rated
Homebuilder



4.4 ★★★★★



tricohomes.com

Renderings are artist's conceptions only and vary by community and lot selection. Prices, floorplans, specifications and dimensions are approximate and are subject to change without notice. E.&O.E. All rights reserved, including the right if reproduction in the whole or in part without the permission of Trico Homes. Plan updated April 1, 2026

BUILDING IN 31 COMMUNITIES:
FRONT-GARAGE HOMES | LANED HOMES | DUPLEXES | TOWNHOMES | CONDOS