

IMMEDIATE POSSESSION

THE KINGSLEY ZLL

2,492 SQ.FT.

huxley

207 Huxland Path NE

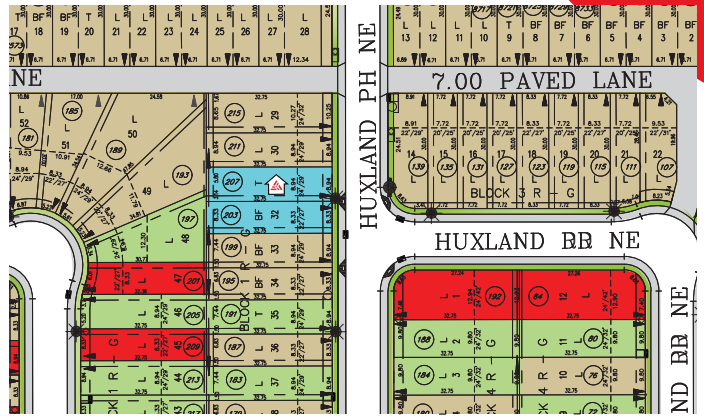
5 Bedrooms ▲ 4 Bathrooms ▲ Double Garage



**SHOWHOME
LEASEBACK**

OPTIONS INCLUDED IN THIS HOME:

- East facing homesite near green space, recreation area & walking distance to a future school
- 2 Bedroom developed basement
- Main floor flex room
- Main floor bedroom & full bathroom
- Spice kitchen
- 42" Upper cabinetry & crown moulding in kitchen
- Electric fireplace in great room
- 4 Bedrooms & central bonus room on upper floor
- 5 Piece owner's ensuite with glass & tile shower
- Tile flooring in upper bathrooms & laundry room
- Rear deck
- A/C installed
- Furniture included in this leaseback



Plus
**RECEIVE YOUR OWN
TRICO RED CARD**



& ENJOY INCREDIBLE ONGOING SAVINGS & REWARDS FROM OUR PARTNERS & RETAILERS

VISIT OUR SHOWHOMES

203 & 207 Huxland Path NE
Calgary, AB



THE OAKRIDGE



THE KINGSLEY

Showhome Hours:

MON - THURS: 2PM - 8PM
FRI: Closed
SAT - SUN: 12PM - 5PM

Contact Sam Bibanco

CALL: 403.452.1350 | **EMAIL:** sambibanco@tricohomes.com



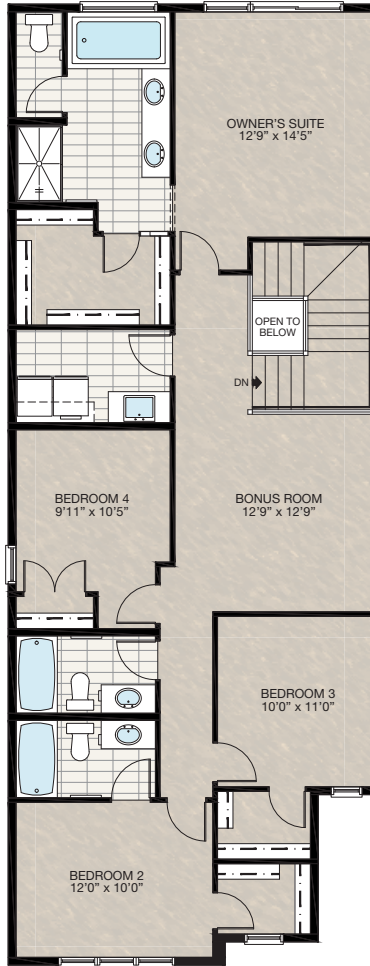
Trico Homes™

tricohomes.com

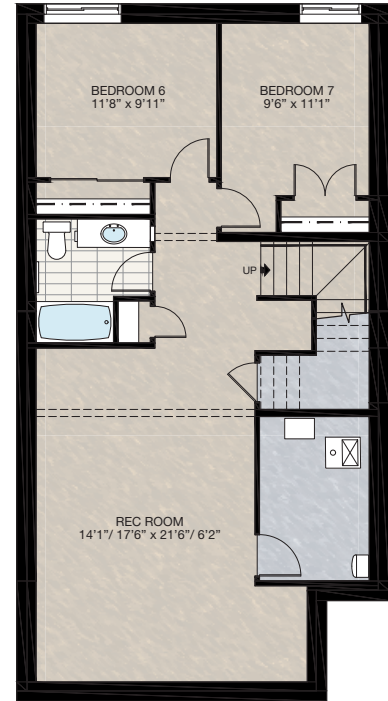
MAIN
1068 SQ.FT.



UPPER
1424 SQ.FT.



BASEMENT
808 SQ.FT.



Renderings are artist's conceptions only and may vary by community and lot selection. Prices, floorplans, specifications and dimensions are approximate and are subject to change without notice. E.&O.E. © All rights reserved, including the right if reproduction in the whole or in part without the permission of Trico Homes. Plan updated April 8, 2026.



tricohomes.com