

← 29' →
Min. Lot Width

 3 Bedroom

 2.5 Bathrooms

 Double Garage

THE
LEXARI ZLL
2195 SQ.FT.

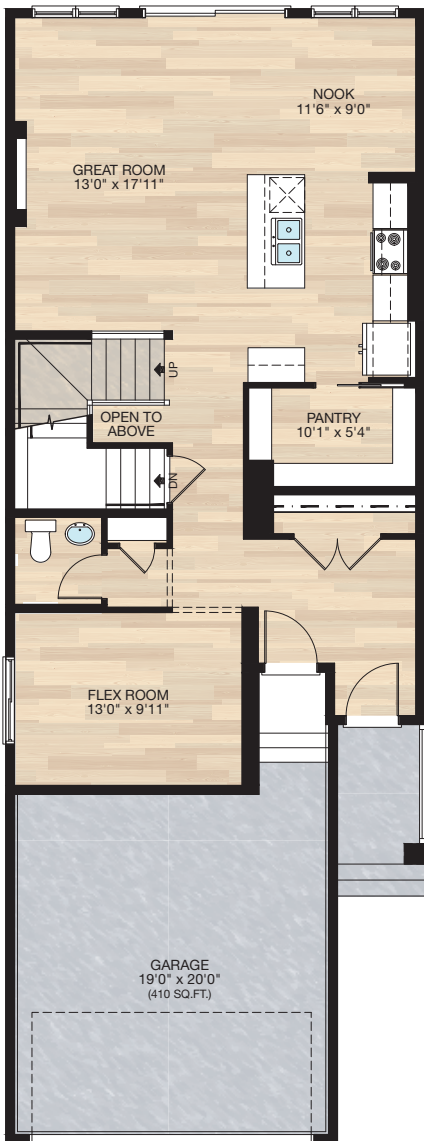
Elite Specification



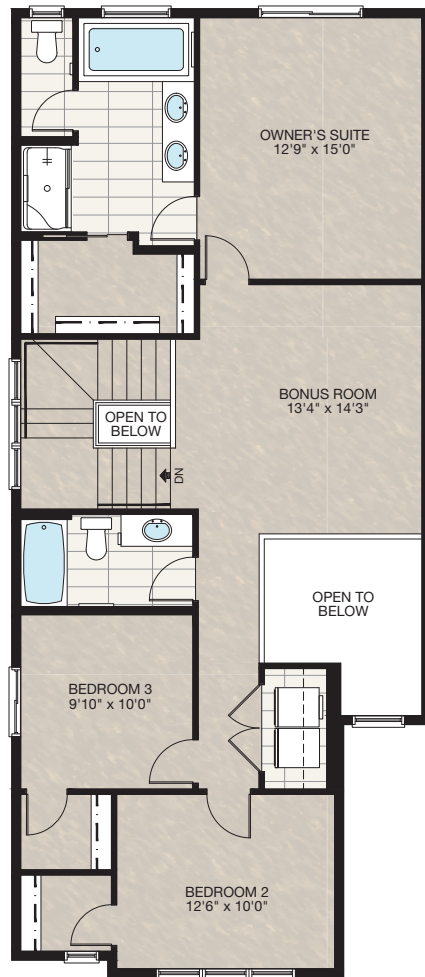
Trico Homes™
The Heart of Homebuilding®

STANDARD PLAN

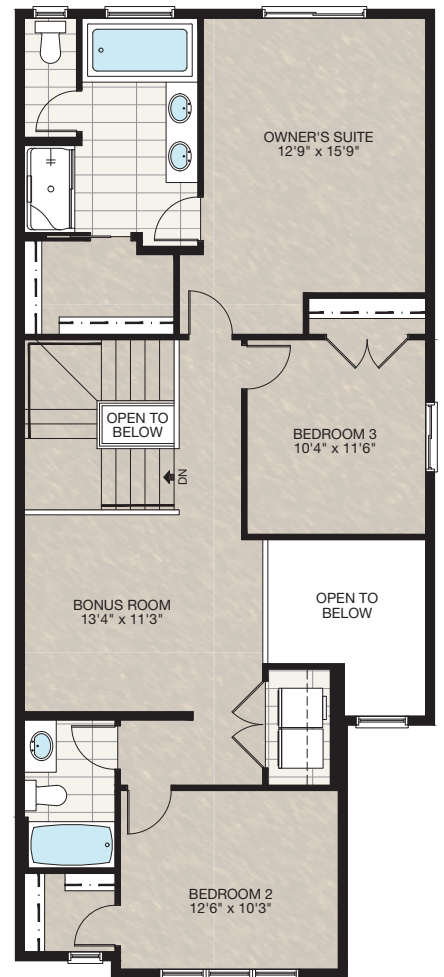
THE
LEXARI ZLL
2195 SQ.FT.



MAIN
1031 SQ.FT.



UPPER
1164 SQ.FT.



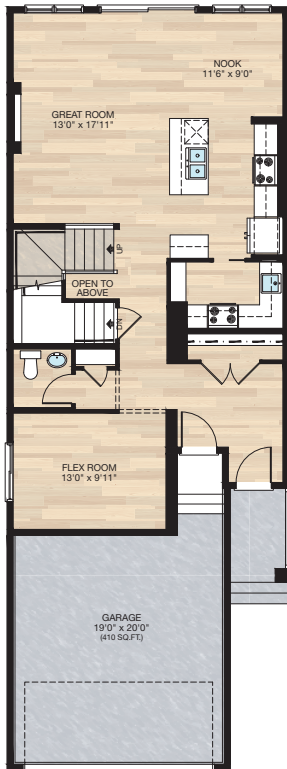
UPPER
(FOR LONG SIDE ZERO)
1164 SQ.FT.



FEATURED OPTIONS

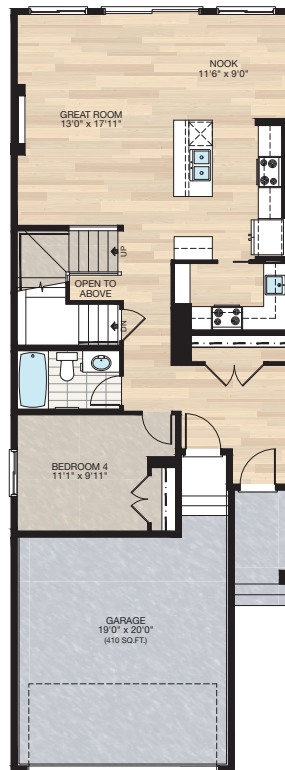


SELECT-1
SPICE KITCHEN OPTION



SELECT-2
**MAIN FLOOR BEDROOM OPTION WITH
FULL BATH & SPICE KITCHEN**
**Must be short side zero*

- Add electrical for spice kitchen
- Add full bath
- Delete half bath
- Add tile to full bath
- Add closet in bedroom
- Add SD/CM combo
- Add 2'6" door to bedroom
- Add (2) 2' doors to closet
- Delete 60" x 48" from flex room
- Add 48" x 40" to bedroom



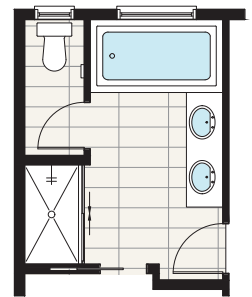
SELECT-3
BEDROOM & FULL BATH OPTION
**Must be short side zero*

- Add full bath
- Delete half bath
- Add tile to full bath
- Add closet in bedroom
- Move SD to bedroom
- Add SD/CM to hallway
- Add closet
- Add 2'6" door to bedroom
- Add (2) 2' doors to closet



SELECT-4
TILED SHOWER IN ENSUITE OPTION

- Delete 36" x 60" acrylic stall shower
- Add 36" x 60" tiled shower

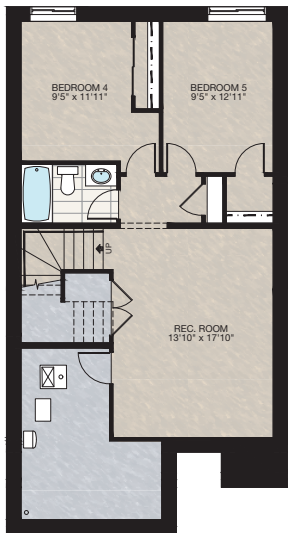


FEATURED OPTIONS

THE
LEXARI ZLL
2195 SQ.FT.

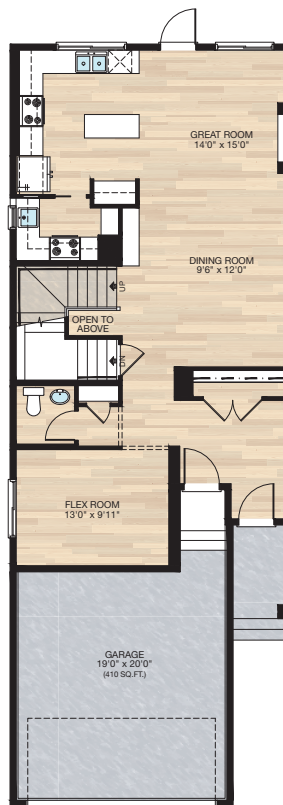
SELECT-5 BASEMENT DEVELOPMENT OPTION

- 685 Sq.Ft. Developed area
- Includes finished basement stairwell
- Add 1 riser to stairwell for 9' basement ceiling (8'9" Headroom clearance)
- Add 48" x 36" HSL window
- Add 60" x 36" DBSL window
- Delete 60" x 24" DBSL window



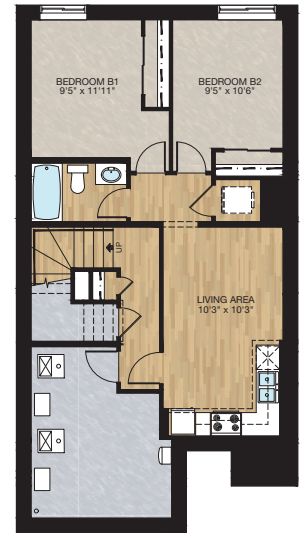
SELECT-6 REAR KITCHEN OPTION WITH SPICE KITCHEN

- Move kitchen to rear
- Add electrical for spice kitchen
- Delete (2) 60" x 72" VSL window from the rear elevation
- Add (1) 72" x 48" HSL windows to the rear elevation
- Add (1) 60" x 72" HSL windows to the rear elevation
- Add (1) 24" x 48" VSL to spice kitchen



SELECT-7 SECONDARY SUITE OPTION #1 **Must be short side zero*

- 677 Sq.Ft. Developed area
- Add electrical for secondary suite
- Includes finished basement stairwell (LVP)
- 15 Risers for 9' basement ceiling (8'9" headroom clearance)
- Add (2) 48" x 36" DBSL window
- Delete 48" x 24" DBSL window, includes washer & dryer rough-in only
- Second furnace & HRV added to accommodate secondary suite
- Add exterior light & switch to side entry
- Change switch to basement from 3-way to 4-way



MAIN FLOOR STAIR FOR SECONDARY SUITE

Trico Homes is a local home builder, with new single and multi-family homes for sale in Calgary, Okotoks, Chestermere, Cochrane, Didsbury, Spring Bank and Airdrie. Offering a great selection of starter, move-up, semi-estate and estate models in numerous communities, you'll find the house that's just right for you! Look for this model and many others in Ambleton, Ambleridge, Belmont, Bridgeport, Chelsea, Chelsea Court Townhomes, Coach & Gable Street Towns, Cornerbrook, Creekview, D'Arcy, Damkar Court, Dawson's Landing, Glacier Ridge, Heartwood, Homestead, Huxley, Legacy, Pine Creek, Rivercrest, Rose Ranch, Seton, Sirocco, Southbow Landing, Spring Valley, Summit Condos, Vantage Rise, Foxtail Street Towns, Verona North Townhomes, Wentworth South, West83 Townhomes, and Wolf Willow.



Renderings are artist's conceptions only and may vary by community and lot selection. Prices, floorplans, specifications and dimensions are approximate and are subject to change without notice. E.&O.E. © All rights reserved, including the right of reproduction in the whole or in part without the permission of Trico Homes.

Plan updated as of April 7, 2026



tricohomes.com

IMAGE GALLERY



IMAGE GALLERY

THE
LEXARI ZLL
2195 SQ.FT.

