



← 33' →

Min. Lot Width

 3 Bedroom

 2½ Bathrooms

 Double Garage

THE HIGHLAND ZLL

2193 SQ.FT.

☐ Elements Specification

☐ Elite Specification

☐ Elite Plus Specification

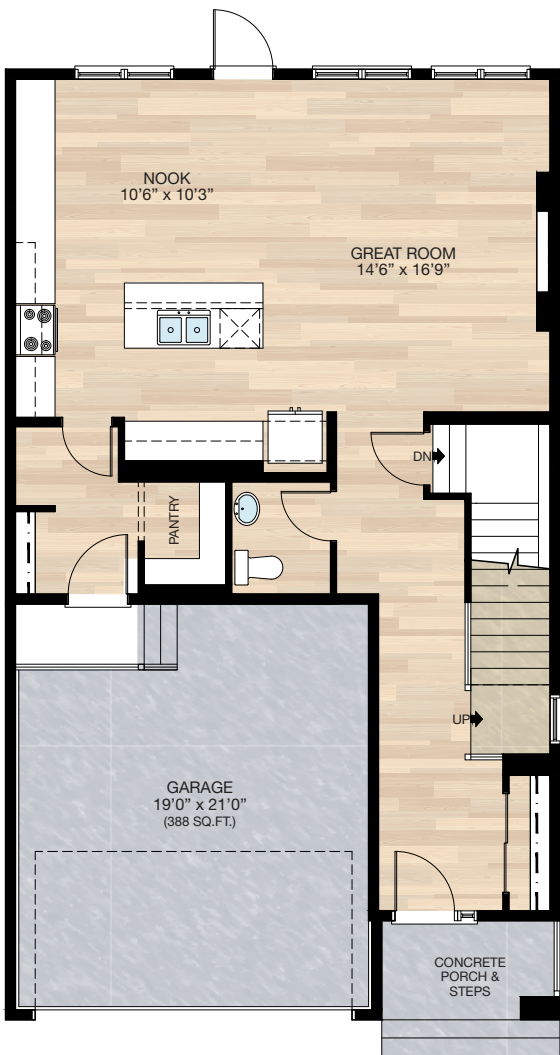


Trico Homes™

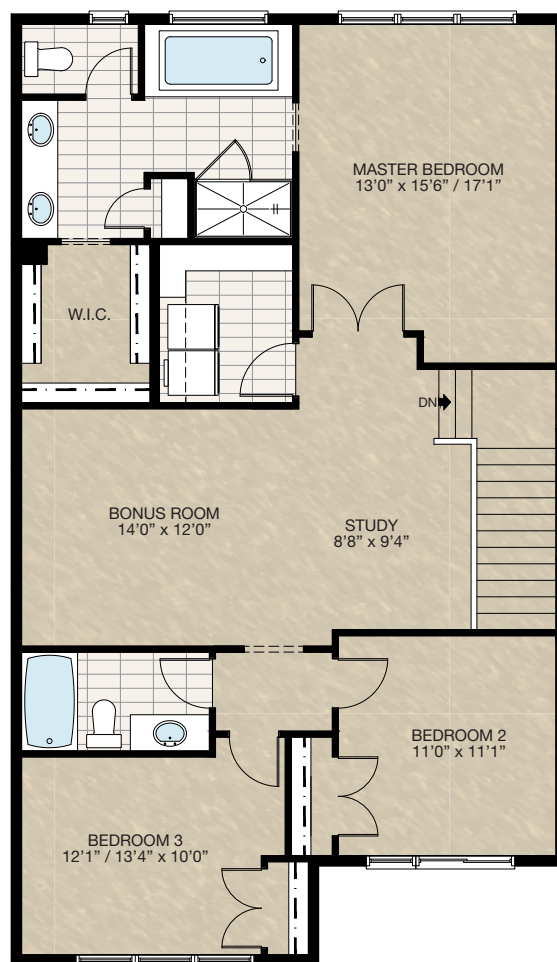
The Heart of Homebuilding®

STANDARD PLAN

THE
HIGHLAND
ZLL
2193 SQ.FT.



MAIN
911 SQ.FT.



UPPER
1282 SQ.FT.

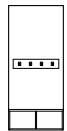
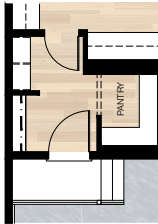
HARDWOOD	DECK	CARPET	CONCRETE	TILE	LAMINATE	LINO
----------	------	--------	----------	------	----------	------

FEATURED OPTIONS

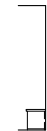


SELECT-1 MUDROOM MDF BENCH OPTION 1

- Add 4'0" MDF bench & coat hooks with MDF backing



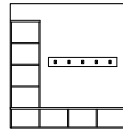
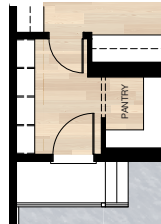
MDF
Bench
Elevation



MDF
Bench
Section

SELECT-2 MUDROOM MDF LOCKER OPTION 2

- Delete coat closet at mudroom
- Add 8'5.5" locker & coat hooks with MDF backing



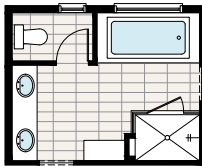
MDF
Locker
Elevation



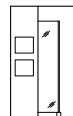
MDF
Locker
Section

SELECT-3 ENSUITE OPTION 1

- * MUST combined with standard upper floor or **SELECT-5** upper floor option
- Delete linen closet
- Add 36" x 18" make-up desk with 6" tile backsplash & standard mirror
- Add light & switch and GFI electrical outlet at make-up desk
- Delete 60" x 36" fibreglass shower
- Add 60" x 44" tile shower with 10mm glass & two tiled niches



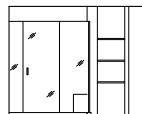
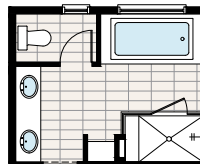
Shower & Make-Up
Desk Elevation



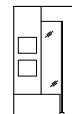
Shower Tile
Niche Detail

SELECT-4 ENSUITE OPTION 2

- * MUST combined with standard upper floor or **SELECT-5** upper floor option
- Delete linen closet
- Add three 18" deep MDF shelving
- Delete 60" x 36" fibreglass shower
- Add 72" x 44" tile & glass shower with 10mm glass, tile bench & two tile niches



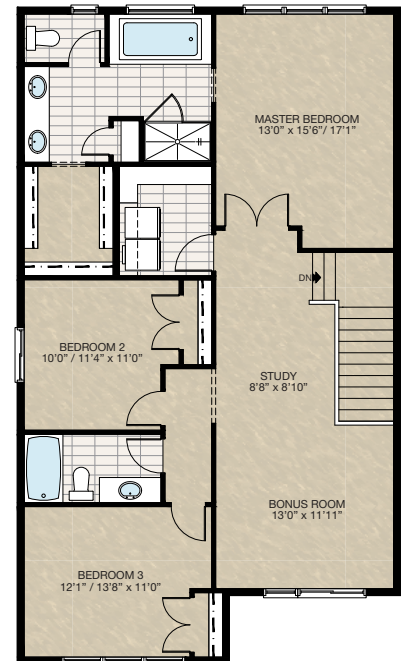
Shower & MDF
Shelving Detail



Shower Tile Niche
& Bench Detail

SELECT-5 FRONT BONUS ROOM OPTION

- Additional 6" vanity to main bath
- Relocate bedroom 2
- Delete 72" x 24" HSL from previous bonus room location
- Add 48" x 40" HSL to bedroom 2
- *MUST be short side zero



HARDWOOD

DECK

CARPET

CONCRETE

TILE

LAMINATE

LINO

tricohomes.com

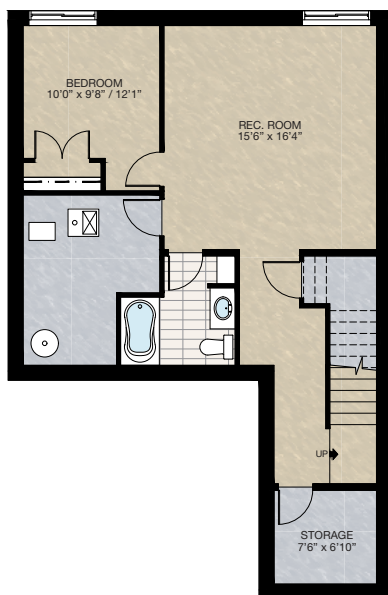
FEATURED HIGHLAND ZLL OPTIONS

THE
HIGHLAND
ZLL
2193 SQ.FT.

SELECT-9

BASEMENT DEVELOPMENT OPTION

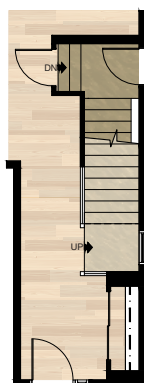
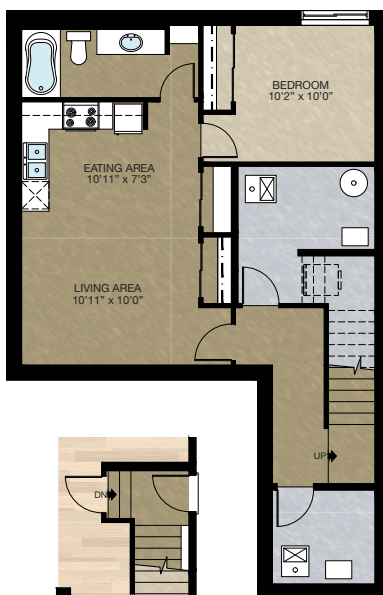
- 569 Sq.Ft. developed area
- Add 1 riser to finished stairwell for 9'0" basement ceiling (8'9" headroom clearance)
- All basement windows upgraded from 24" high to 36" high



SECONDARY SUITE OPTION 1

- 600 Sq.Ft. basement development
- Included finished basement stairwell
- Add 2'8" side entrance door & exterior light at stairwell
- Upgraded stairwell switches to 4-way
- Add 1 riser to stairwell for 9'0" basement ceiling (8'9" headroom clearance)
- Upgrade one basement window from 24" high to 36" high
- Delete one 60" x 24" HSL window at rear
- Add 8" mech. wall at front entry closet for HRV vent
- Includes washer & dryer rough-in only
- Change beam next to bottom of stair from drop beam to flush beam

*MUST be long size zero

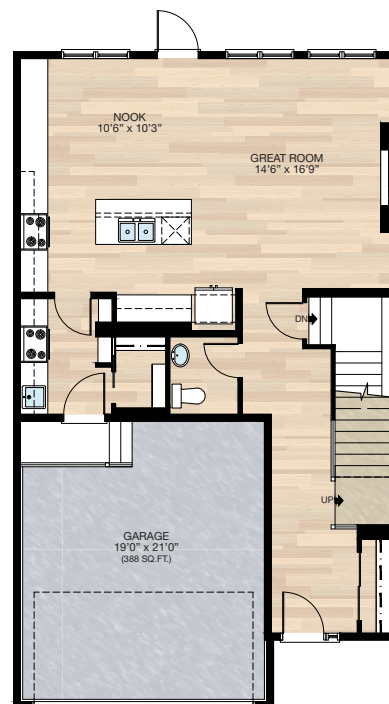


Main Floor Stair &
Front Entry Closet
For Secondary Suite
Option 1

SELECT-10

SPICE KITCHEN OPTION

- Reconfigure mudroom area
- Reduced main kitchen cabinetry by 18" next to fridge
- Add stove, sink & cabinetry for spice kitchen
- Door between kitchen & spice kitchen changed from 2'6" to 2'8"
- Add 2" x 8" wall to bonus room for spice kitchen hoodfan vent for long side zero



HARDWOOD

DECK

CARPET

CONCRETE

TILE

LAMINATE

LINO

tricohomes.com

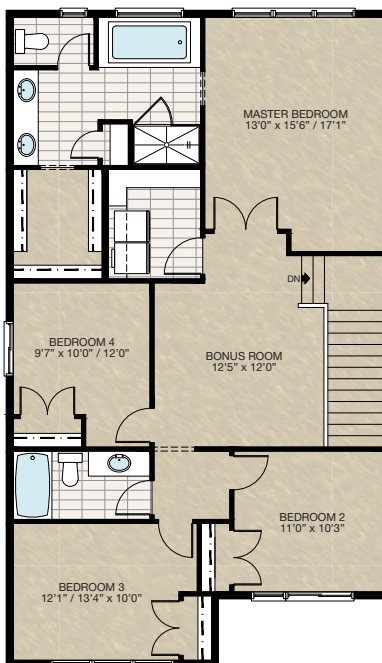
FEATURED HIGHLAND ZLL OPTIONS

THE
HIGHLAND
ZLL
2193 SQ.FT.

SELECT-11 UPPER FLOOR 4 BEDROOMS OPTION

- Additional 6" vanity to main bath
- Delete 72" x 24" HSL window from previous bonus room location
- Add 48" x 40" HSL window to bedroom 4
- Reduced bedroom 2 by 10" to accommodate bonus room location

*MUST be short size zero



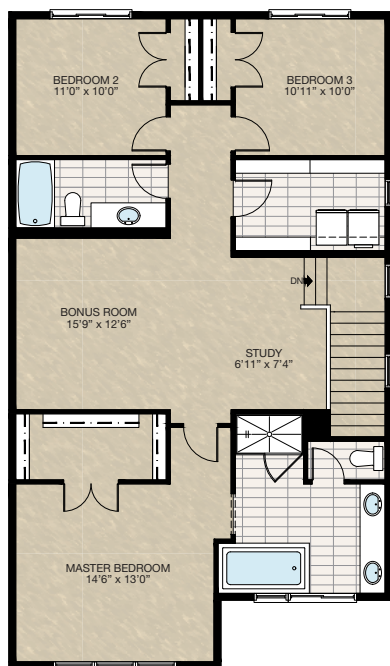
FEATURED OPTIONS

THE
HIGHLAND
ZLL
2193 SQ.FT.

SELECT-6

FRONT MASTER BEDROOM WITH CENTRE BONUS ROOM OPTION

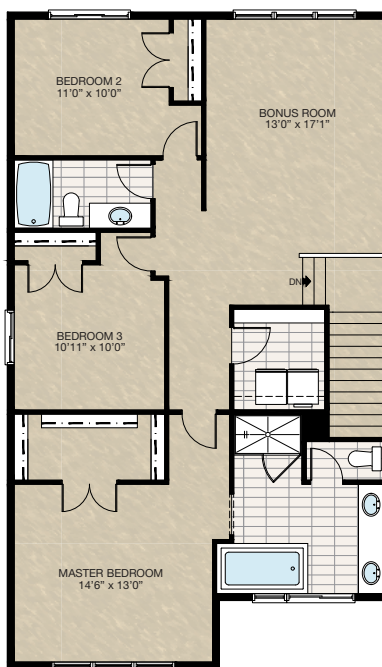
- Additional 18" vanity to main bath
- Additional 12" vanity to ensuite
- Additional linen shelving to laundry room
- Add two 66" free slide to laundry room
- Relocate 24" x 48" VSL from rear to laundry room
- Delete 60" x 48" P (frosted) window from rear
- Add two 72" x 40" HSL to rear bedroom 2 & 3



SELECT-7

FRONT MASTER BEDROOM WITH REAR BONUS ROOM OPTION

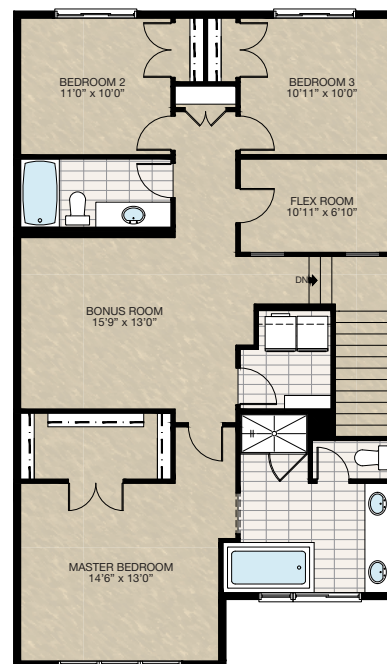
- Additional 6" vanity to main bath
- Additional 12" vanity to ensuite
- Delete 24" x 48" VSL from rear
- Delete 60" x 48" P (frosted) window from rear
- Add 72" x 40" HSL to rear bedroom 2
- Delete 72" x 24" HSL on the side
- Add 48" x 40" HSL to bedroom 3
- *MUST be short side zero



SELECT-8

FRONT MASTER BEDROOM WITH FLEX ROOM OPTION

- Additional 18" vanity to main bath
- Additional 12" vanity to ensuite
- Relocate 24" x 48" VSL from rear to flex room
- Add two 30" x 24" interior glass inserts to flex room
- Delete 60" x 48" P (frosted) window from rear
- Add two 72" x 40" HSL to rear bedroom 2 & 3
- Add linen closet



Trico Homes is a local home builder, with new single and multi-family homes for sale in Calgary, Okotoks, Chestermere, Cochrane, and Airdrie. Offering a great selection of starter, move-up and semi-estate models in numerous communities, you'll find the house that's just right for you! Look for this model and many others in Ambleton, Belmont, Carrington, Chelsea, Coach Ridge, Cornerbrook, Cranston's Riverstone, D'Arcy, Dawson's Landing, Evanston, Hamilton Heights, Heritage Hills, Homestead, Legacy, Legacy Commons Townhomes, Midtown, Pine Creek, Parallel Bloc Townhomes, Precedence, Precedence Street Towns, Redstone, Rivercrest, Seton, Sirocco, Wedderburn, Wentworth Pointe Townhomes and Wolf Willow.



Renderings are artist's conceptions only and may vary by community and lot selection. Prices, floorplans, specifications and dimensions are approximate and are subject to change without notice. E.&O.E. © All rights reserved, including the right of reproduction in the whole or in part without the permission of Trico Homes.

Plan updated as of May 13, 2021.



tricohomes.com