


← 33' →
Min. Lot Width

 3 Bedroom

 2½ Bathrooms

 Double Garage

THE SAVANNAH ZLL

2006 SQ.FT.

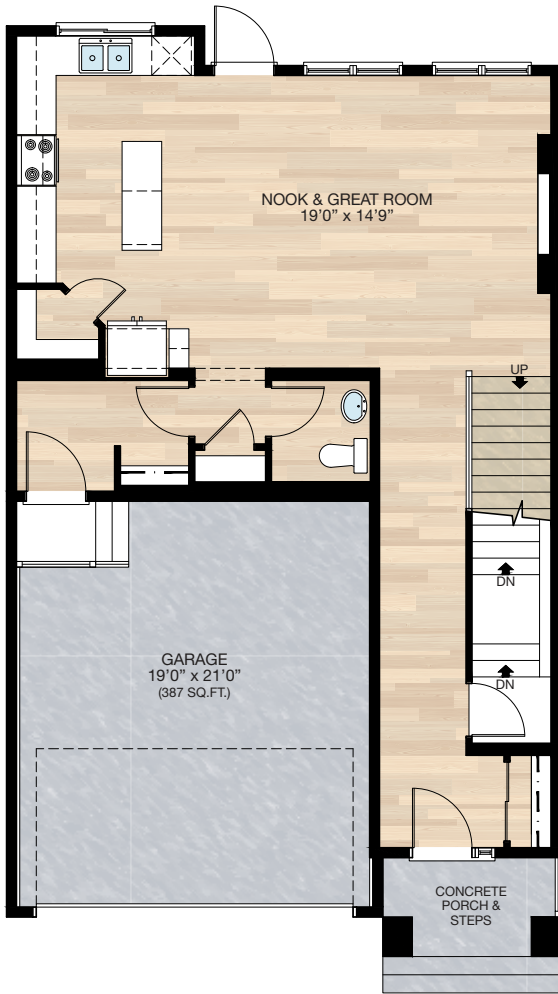
Elements Specification Elite Specification Elite Plus Specification



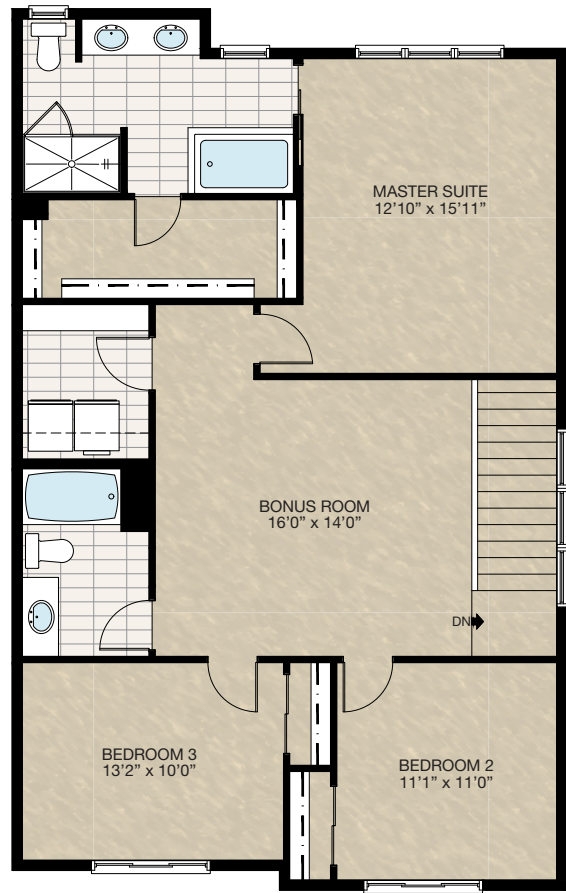
Trico Homes™
The Heart of Homebuilding®

STANDARD PLAN

THE SAVANNAH ZLL
2006 SQ.FT.



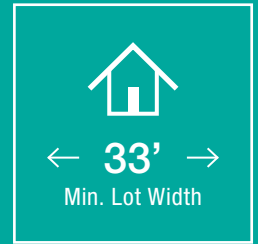
MAIN
810 SQ.FT.



UPPER
1196 SQ.FT.

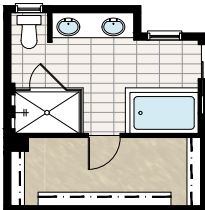


FEATURED OPTIONS



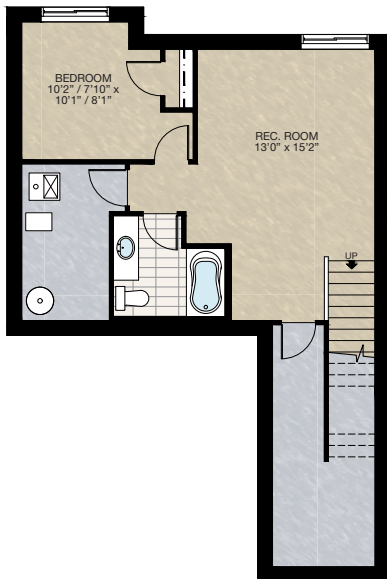
SELECT-1 ENSUITE OPTION

- Delete 60" x 36" fiberglass shower
- Add 60" x 40" tiled shower with 10mm glass & tiled niches



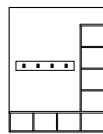
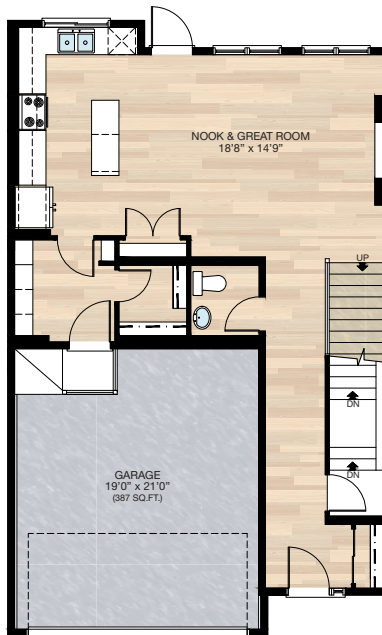
SELECT-2 BASEMENT DEVELOPMENT OPTION

- 464 Sq.Ft. developed area
- Add 1 riser to finished stairwell for 9'0" basement ceiling (8'9" headroom clearance)
- All basement windows upgraded from 24" high to 36" high
- Change part of the full height wall at stairwell to 42" height stubwall

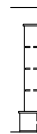


SELECT-3 MUDROOM OPTION

- Reduced main kitchen cabinetry
- Add 2" x 4" wall behind kitchen cabinetry for fridge recess
- Pantry closet to main kitchen in lieu of corner pantry
- Redesigned mudroom & half bath area
- Add 7'0" MDF built-in lockers
- WIC to mudroom in lieu of standard closet
- Reconfigured stair at garage entrance



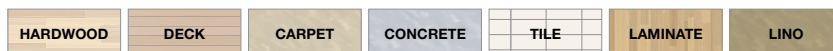
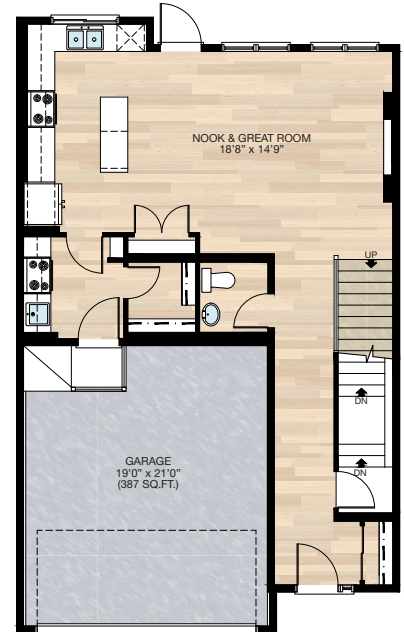
MDF Locker
Elevation



MDF Locker
Section

SELECT-4 SPICE KITCHEN OPTION

- Reduced main kitchen cabinetry
- Add 2" x 4" wall behind kitchen cabinetry for fridge recess
- Pantry closet to main kitchen in lieu of corner pantry
- Redesigned mudroom & half bath area
- Add cabinetry, stove, hoodfan, sink & pantry wire shelving for spice kitchen
- WIC to mudroom in lieu of standard closet
- Delete 24" x 72" P window at mudroom
- Add 24" x 48" VSL window to spice kitchen
- Reconfigured stair at garage entrance
- Add 2" x 8" wall to upper floor laundry room for spice kitchen hoodfan vent for long size zero

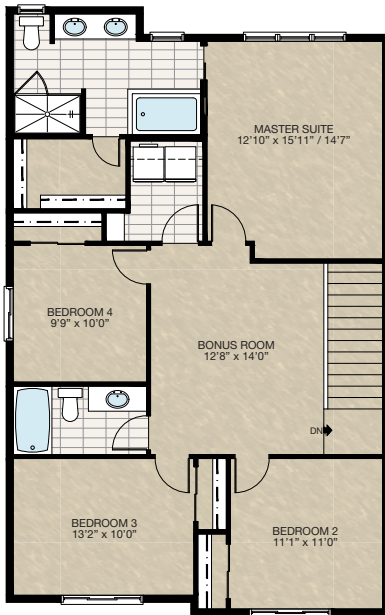


FEATURED OPTIONS

THE
SAVANNAH
ZLL
2006 SQ.FT.

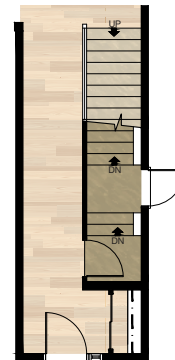
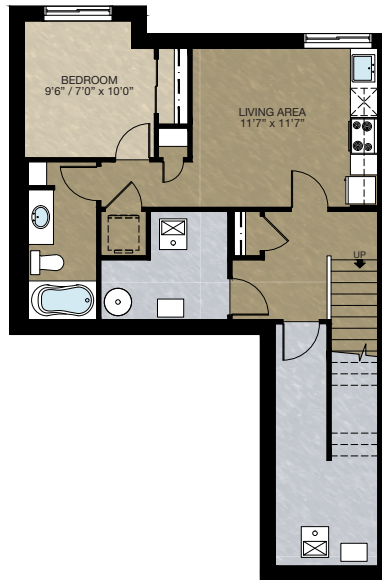
SELECT-5 UPPER FLOOR 4 BEDROOMS OPTION

- Reduced master bedroom closet to accommodate new laundry room location
 - Reduced bonus room to accommodate bedroom 4
 - Add 48" x 40" HSL window to bedroom 4
- *MUST be short side zero



SECONDARY SUITE OPTION

- 485 Sq.Ft. basement development
 - Included finished basement stairwell
 - Add 2'8" side entrance door & exterior light at stairwell
 - Upgraded stairwell switches to 4-way
 - Add 1 riser to stairwell for 9'0" basement ceiling (8'9" headroom clearance)
 - All basement windows upgraded from 24" high to 36" high
 - Includes washer & dryer rough-in only
 - Change beam next to bottom of stair from drop beam to flush beam
- *MUST be short side zero



Main Floor
Stair With
Side Entrance

Trico Homes is a local home builder, with new single and multi-family homes for sale in Calgary, Okotoks, Chestermere, Cochrane, and Airdrie. Offering a great selection of starter, move-up and semi-estate models in numerous communities, you'll find the house that's just right for you! Look for this model and many others in Ambleton, Belmont, Carrington, Chelsea, Coach Ridge, Cornerbrook, Cranston's Riverstone, D'Arcy, Dawson's Landing, Evanston, Hamilton Heights, Heritage Hills, Homestead, Legacy, Legacy Commons Townhomes, Midtown, Pine Creek, Parallel Bloc Townhomes, Precedence, Precedence Street Towns, Redstone, Rivercrest, Seton, Sirocco, Wedderburn, Wentworth Pointe Townhomes and Wolf Willow.



Renderings are artist's conceptions only and may vary by community and lot selection. Prices, floorplans, specifications and dimensions are approximate and are subject to change without notice. E.&O.E. © All rights reserved, including the right if reproduction in the whole or in part without the permission of Trico Homes.

Plan updated as of May 13, 2021.



tricohomes.com