


 3 Bedrooms

 2½ Bathrooms

 Double Garage

THE RAVENSWOOD ZLL

2498 SQ.FT.

☐ Elements Specification

☐ Elite Specification

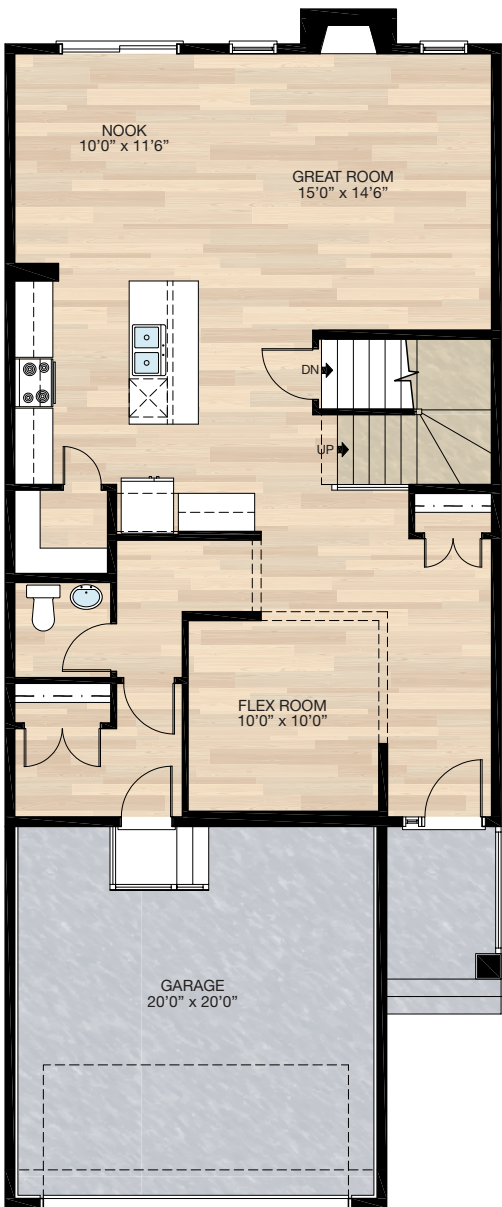
☐ Elite Plus Specification



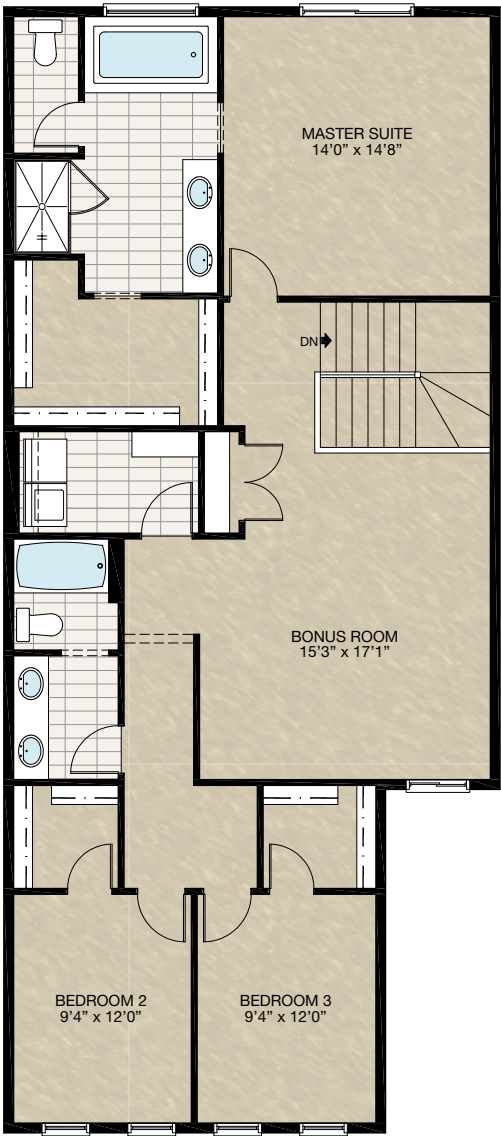
Trico Homes™
The Heart of Homebuilding®

STANDARD PLAN

THE
RAVENSWOOD
ZLL
2498 SQ.FT.



MAIN
1075 SQ.FT.



UPPER
1423 SQ.FT.

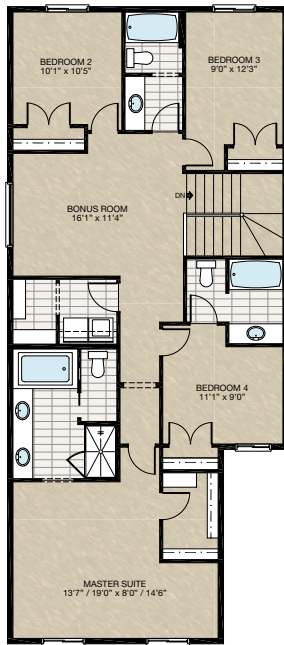
HARDWOOD	DECK	CARPET	CONCRETE	TILE	LAMINATE	LINO
----------	------	--------	----------	------	----------	------

FEATURED RAVENSWOOD ZLL OPTIONS



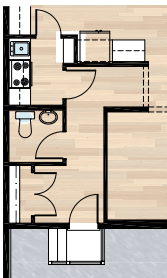
SELECT-10 ALTERNATE 4 BEDROOM OPTION

- Front windows change dependant on elevation chosen
- 48" x 40" HSL added to side in Bedroom 5 if elevation A-5 chosen



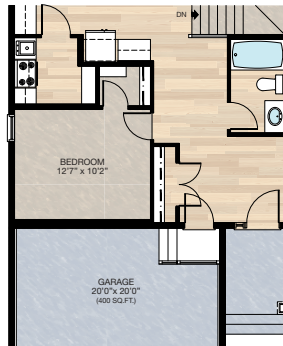
SELECT-11 SPICE KITCHEN OPTION

- Add spice kitchen including range, hood fan & sink
- Reduces kitchen cabinet by fridge 12"
- Add 2'8" x 2'4" door
- Delete 2'0" door



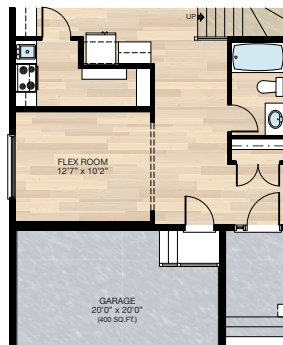
SELECT-12 MAIN FLOOR BEDROOM & SPICE KITCHEN OPTION

- Delete flex room
- Add main floor bedroom with closet & 30" x 72" VSL window
- Add tub shower unit & 3'0" vanity to half bath
- Reduce cabinet by fridge 12"
- Add spice kitchen including range, hood fan & sink
- Increase door from 2'0" to 2'8"



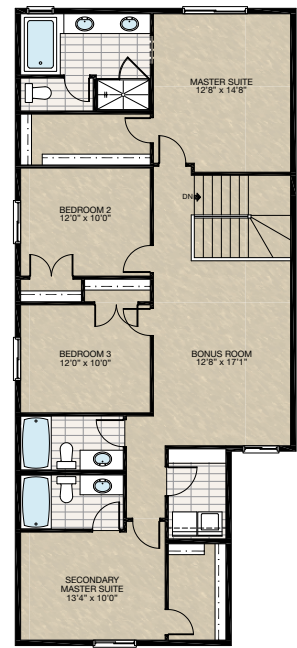
SELECT-14 FULL BATH & SPICE KITCHEN OPTION

- Redesign main floor
- Add 72" x 20" window in Flex Room
- Add tub shower unit & 3'0" vanity to 1/2 bath
- Reduce cabinet by fridge 12"
- Add spice kitchen including range, hoodfan & sink
- Increase door from 2'0" to 2'8" to spice kitchen



SELECT-13 DUAL MASTER OPTION

- Add 52 Sq.Ft. (rear cantilever)
- Redesign upper floor to create 2 master bedrooms & 4 bedrooms total
- Front windows dependant on elevation



HARDWOOD

DECK

CARPET

CONCRETE

TILE

LAMINATE

LINO

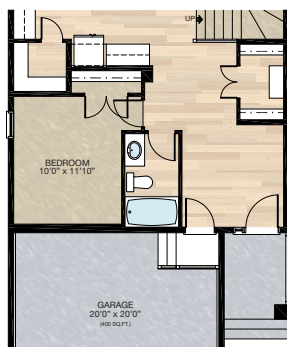
tricohomes.com

FEATURED OPTIONS



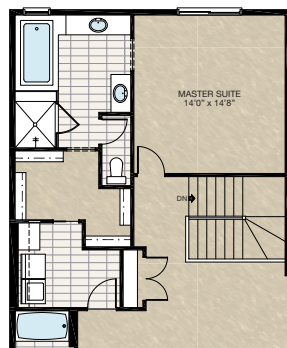
SELECT-1 MAIN FLOOR BEDROOM OPTION

- Delete flex room
- Add main floor bedroom with closet & 30" x 72" VSL window & carpet flooring
- Delete mudroom & increase front closet to create a walk-in closet
- Relocate garage main door & stairs
- Relocate main floor bath
- Add tub / shower unit & 3'0" vanity to half bath & tile flooring



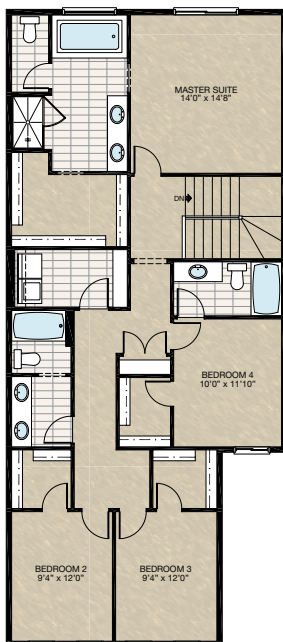
SELECT-2 ENSUITE & LAUNDRY OPTION

- Reduce window width at ensuite
- Add second vanity, total added length of 2'6"
- Delete fibreglass shower & add tile & glass shower (base & walls) with 10mm glass
- Add 2'4" pocket door between WIC & laundry
- Includes 2'6" of base cabinet & removes linen shelves from laundry room



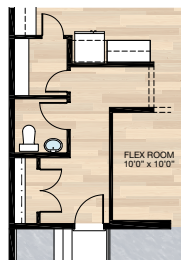
SELECT-3 FOUR BEDROOM OPTION

- Convert bonus room to Bedroom 4
- Includes WIC & ensuite for Bedroom 4
- Relocates linen closet & increase linen shelves in laundry room
- Front windows change dependant on elevation chosen



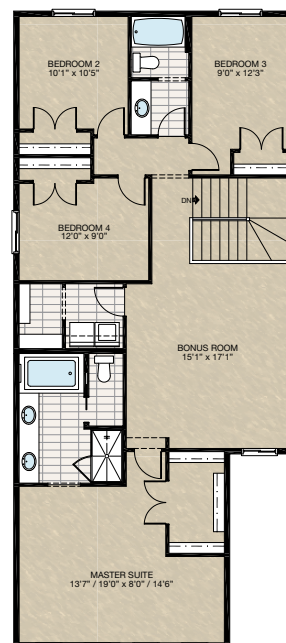
SELECT-8 WALK-THROUGH PANTRY OPTION

- Extend pantry & delete one section of shelving
- Add a 2'0" door to pantry off hallway
- Flip bathroom & move towards mudroom
- Change direction of mudroom closet & delete door to mudroom



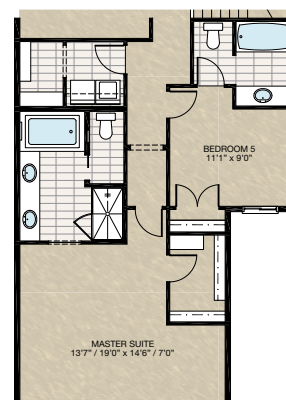
SELECT-4 ALTERNATE FOUR BEDROOM OPTION

- Front windows change dependant on elevation chosen
- Relocate master bedroom to front & secondary bedrooms to rear



SELECT-5 FIVE BEDROOM OPTION

- Must choose **SELECT-4** option
- Add fifth bedroom including closet
- Add ensuite to Bedroom 5
- Front windows change dependant on elevation chosen



HARDWOOD

DECK

CARPET

CONCRETE

TILE

LAMINATE

LINO

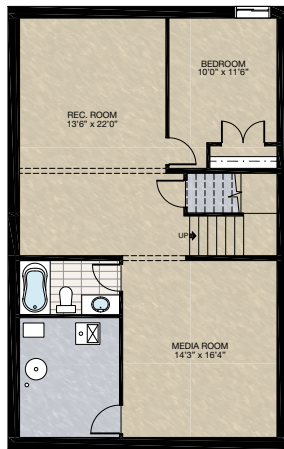
trichomes.com

FEATURED OPTIONS

THE
RAVENSWOOD
ZLL
2498 SQ.FT.

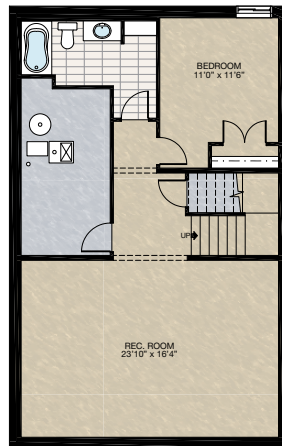
SELECT-6 BASEMENT DEVELOPMENT OPTION

- 801 Sq.Ft. of developed area
- Includes finished basement stairwell
- Delete 2'8" door at top of stairwell
- Add one riser to stairwell
- Increase basement foundation height to 9'0" (8'9" headroom clearance)

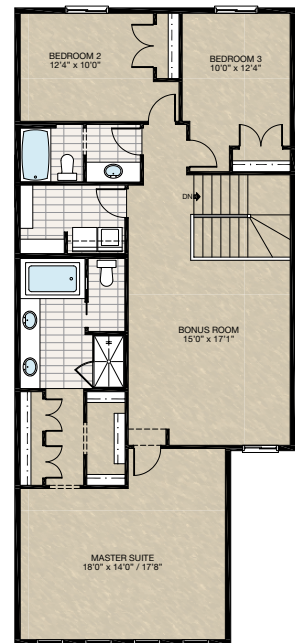


SELECT-7 ALTERNATE BASEMENT DEVELOPMENT OPTION

- 776 Sq.Ft. of developed area
- 3-Piece bath rough-in location moved
- Furnace / HWT / electrical panel moved
- Includes finished basement stairwell
- Delete 2'8" door at top of stairwell
- Add one riser to stairs
- Increase basement foundation height to 9'0" (8'9" headroom clearance)



SELECT-9 THREE BEDROOM UPPER FLOOR PLAN OPTION



Trico Homes is a local home builder, with new single and multi-family homes for sale in Calgary, Okotoks, Chestermere, Cochrane, and Airdrie. Offering a great selection of starter, move-up and semi-estate models in numerous communities, you'll find the house that's just right for you! Look for this model and many others in Ambleton, Belmont, Carrington, Chelsea, Coach Ridge, Cornerbrook, Cranston's Riverstone, D'Arcy, Dawson's Landing, Evanston, Hamilton Heights, Heritage Hills, Homestead, Legacy, Legacy Commons Townhomes, Midtown, Pine Creek, Parallel Bloc Townhomes, Precedence, Precedence Street Towns, Redstone, Rivercrest, Seton, Sirocco, Wedderburn, Wentworth Pointe Townhomes and Wolf Willow.



Renderings are artist's conceptions only and may vary by community and lot selection. Prices, floorplans, specifications and dimensions are approximate and are subject to change without notice. E.&O.E. © All rights reserved, including the right of reproduction in the whole or in part without the permission of Trico Homes.

Plan updated as of May 13, 2021.



tricohomes.com