



 ← 31' →
 Min. Lot Width

-  3 Bedrooms
-  2½ Bathrooms
-  Double Garage

THE
WESTCHESTER ZLL
 2402 SQ.FT.

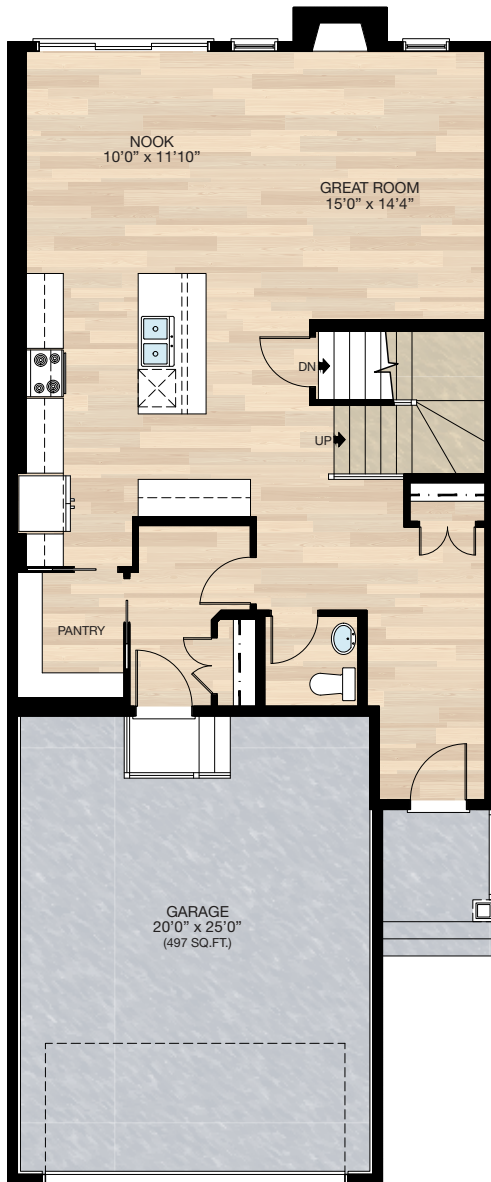
- Elements Specification
 Elite Specification
 Elite Plus Specification



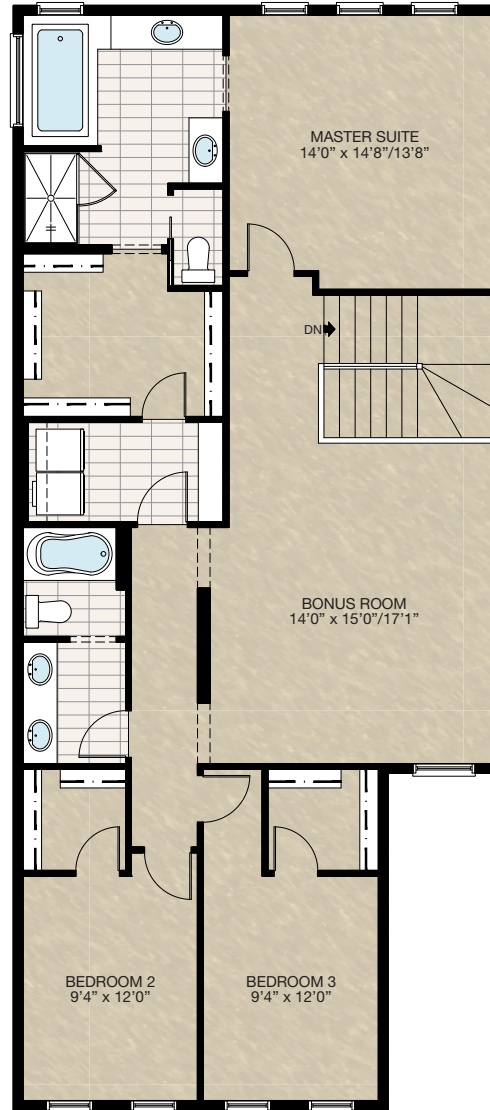
Trico Homes™
 The Heart of Homebuilding®

STANDARD PLAN

THE
WESTCHESTER
ZLL
2402 SQ.FT.



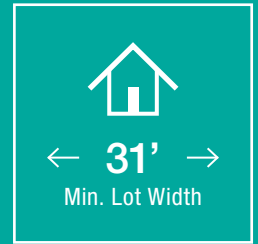
MAIN
979 SQ.FT.



UPPER
1423 SQ.FT.

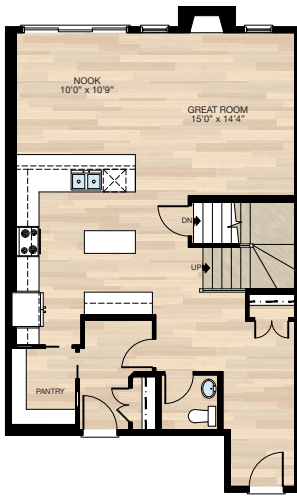
HARDWOOD	DECK	CARPET	CONCRETE	TILE	LAMINATE	LINO
----------	------	--------	----------	------	----------	------

FEATURED OPTIONS



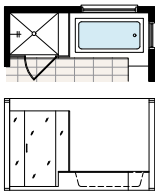
SELECT-1 KITCHEN OPTION

- Redesign kitchen (deletes 2'3" upper cabinets, adds 5'3" lower cabinets)
- Add 2 lights on a single switch
- Change 4-way switch to 3-way



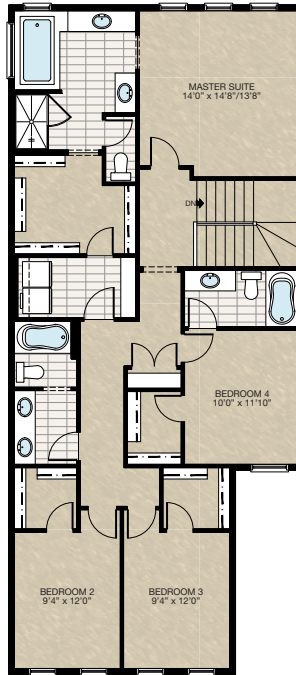
SELECT-7 TILE AND GLASS SHOWER OPTION

- Delete 36" x 60" fiberglass shower
- Add tile & glass shower
- Delete towel bar & add towel hook



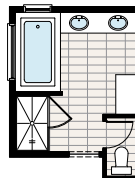
SELECT-5 4 BEDROOM OPTION

- Convert bonus room to 4th bedroom
- Includes walk-in closet & ensuite for 4th bedroom
- Relocates linen closet & increase linen shelves in laundry room



SELECT-6 MAKE-UP DESK OPTION

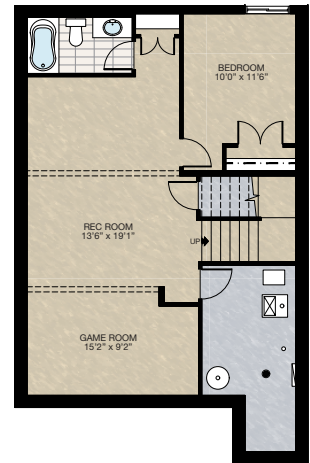
- Remove 8.5" of tub deck & replace with vanity
- Move second sink to other vanity
- Delete small vanity & replace with make-up desk
- Add vanity light & electrical outlet



SELECT-8 BASEMENT DEVELOPMENT OPTION 1

- 681 Sq.Ft. developed area
- Includes finished basement stairwell
- Delete 2'8" door @ top of stairwell
- Add 1 riser to stairs
- Increase basement foundation height to 9'0" (8'9" headroom clearance)

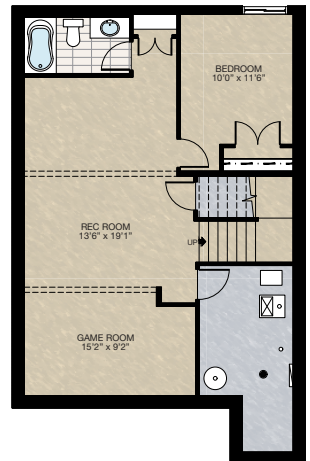
*CANNOT be combined with SELECT-3 or SELECT-4



SELECT-9 BASEMENT DEVELOPMENT OPTION 2

- 681 Sq.ft. developed area
- Includes finished basement stairwell
- Delete 2'8" door at top of stairwell
- Add 1 riser to stairs
- Increase basement foundation height to 9'0" (8'9" headroom clearance)

*Can ONLY be combined with SELECT-3 or SELECT-4



FEATURED OPTIONS

THE
WESTCHESTER
ZLL
2402 SQ.FT.

SELECT-3 FLEX ROOM OPTION

- Add 96 sq.ft. to main floor, this reduces garage by 96 sq.ft.
- Relocate half bath
- Relocate garage entrance
- Delete standard pantry & add cabinet pantry
- Add mudroom lockers
- Please see **SELECT-9** Basement Development for mechanical location revisions to the foundation plan



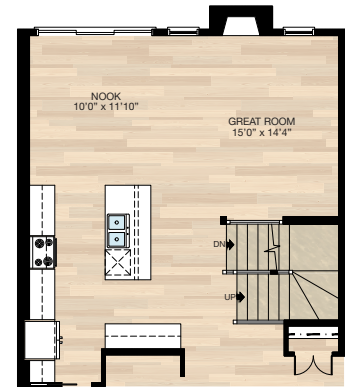
SELECT-4 MUD ROOM OPTION

- Add 96 sq.ft. to main floor, this reduces garage by 96 sq.ft.
- Relocate half bath
- Relocate garage entrance
- Add cabinet pantry
- Add mudroom lockers
- Add dog shower and storage closet
- Please see **SELECT-9** Basement Development for mechanical location revisions to the foundation plan



SELECT-2 ADDITIONAL RAILING TO STAIRS OPTION

- Must add global option to develop the stairwell to the basement or basement development option
- Open up wall between stairs & great room
- Extend flush beam between stairs & great room
- Add 8' of railing
- Electrical changes as shown



Trico Homes is a local home builder, with new single and multi-family homes for sale in Calgary, Okotoks, Chestermere, Cochrane, and Airdrie. Offering a great selection of starter, move-up and semi-estate models in numerous communities, you'll find the house that's just right for you! Look for this model and many others in Ambleton, Arbour Lake, Belmont, Carrington, Chelsea, Coach Ridge, Cornerbrook, Cranston's Riverstone, D'Arcy, Dawson's Landing, Evanston, Hamilton Heights, Heritage Hills, Homestead, Legacy, Midtown, Pine Creek, Parallel Bloc Townhomes, Precedence, Precedence Street Towns, Rivercrest, Seton, Sirocco, Verona West Townhomes, Wedderburn, West83 Townhomes and Wolf Willow.



Renderings are artist's conceptions only and may vary by community and lot selection. Prices, floorplans, specifications and dimensions are approximate and are subject to change without notice. E.&O.E. © All rights reserved, including the right if reproduction in the whole or in part without the permission of Trico Homes.

Plan updated as of January 7, 2022.



tricohomes.com