

# colours of seton

TOWNHOMES

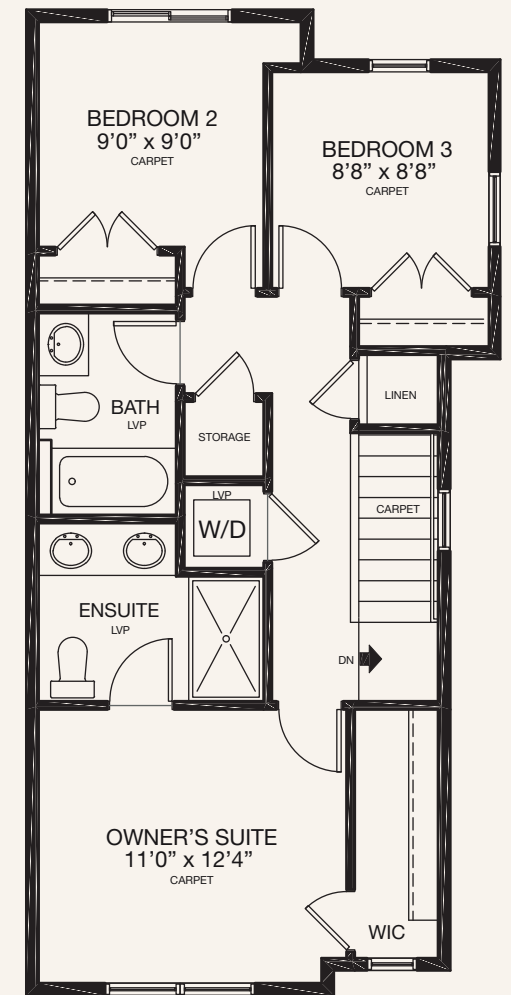
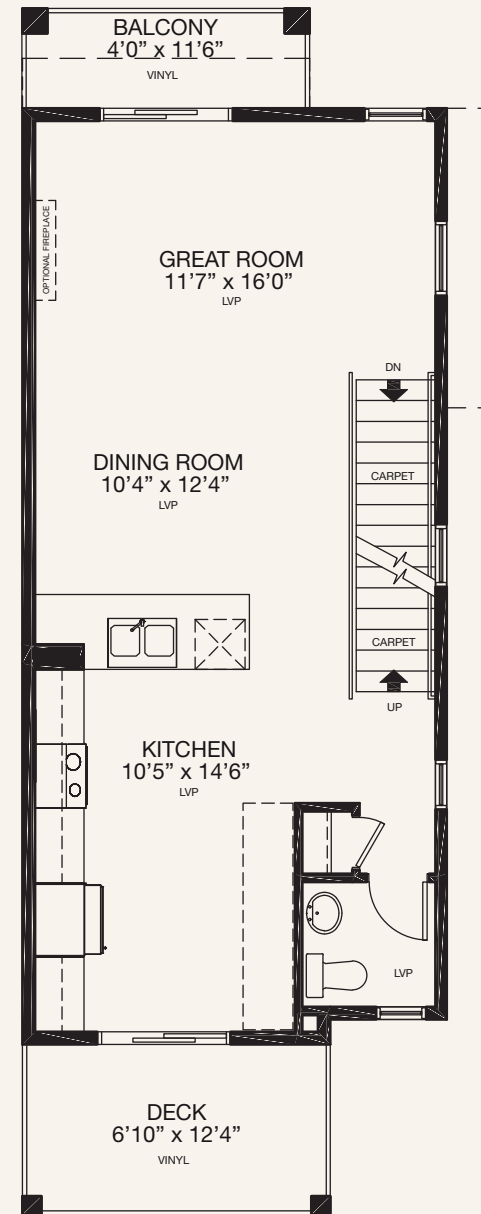
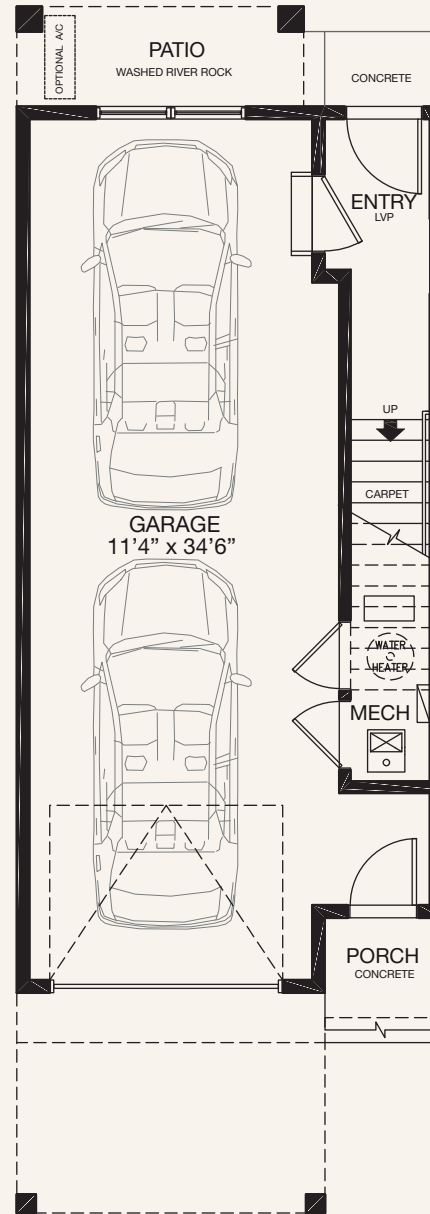
## Hazel

Type D5 | 1376 Sq.Ft | 17' wide

3 Bedrooms

2.5 Baths

Tandem Garage



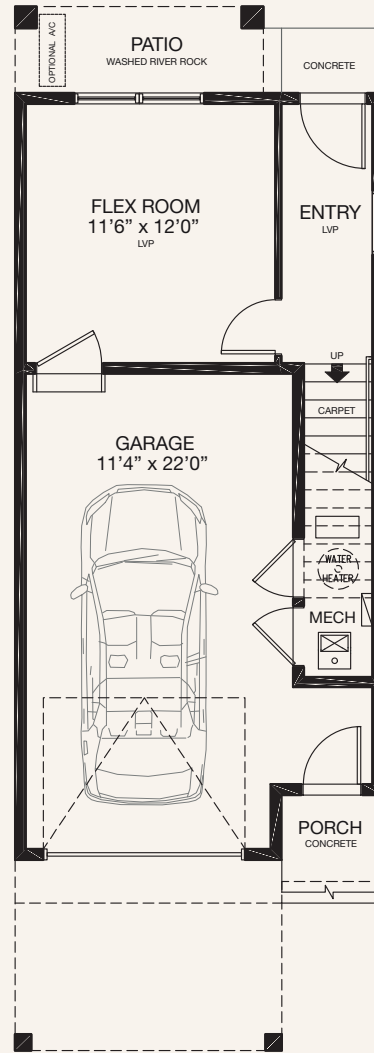
\* Floorplan is an artist rendering only and may be subject to change without notice. Builder reserves the right to make modifications and changes to building design, specifications, features and floorplans without notice. Measurements and areas shown are based on pre-construction estimates and are approximate only. E.&O.E. Windows locations and sizes on these renderings are dependent on building location and elevation as approved by the City of Calgary, confirm with your sales representative exact locations.

# colours of seton

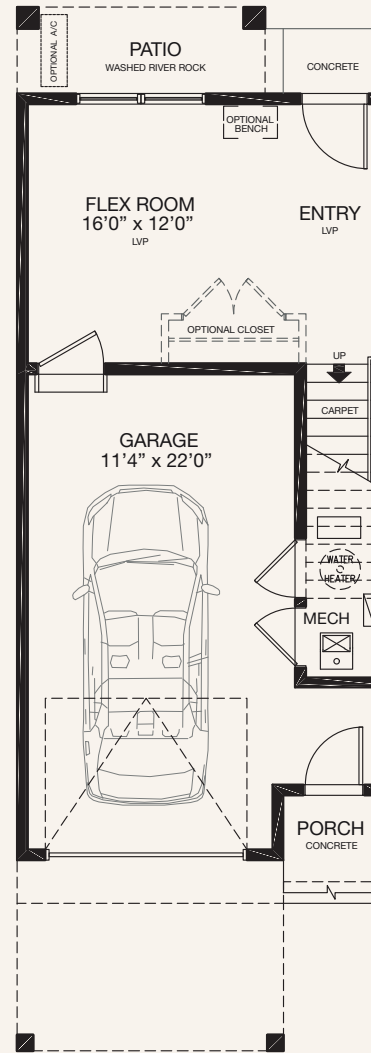
TOWNHOMES

## Hazel

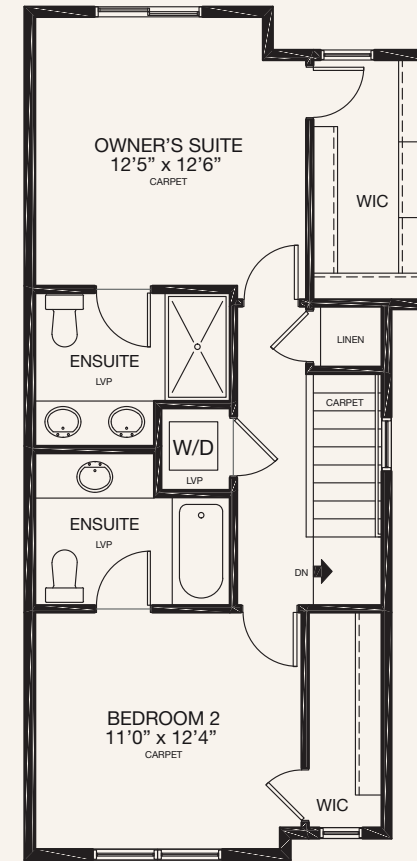
### AVAILABLE OPTIONS



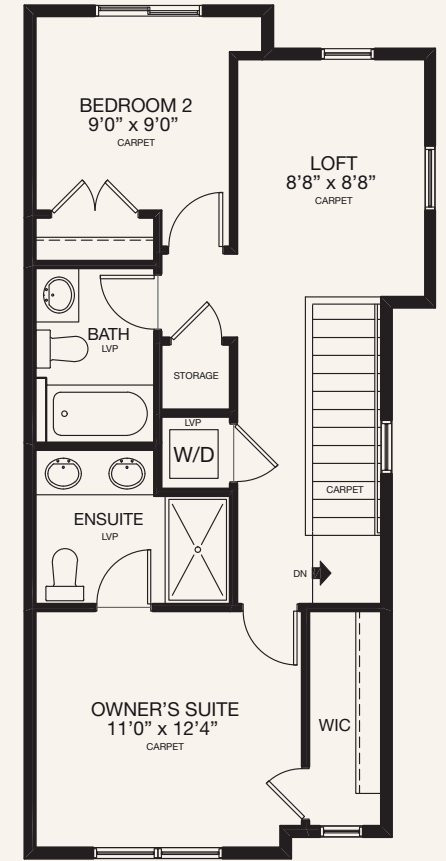
**ENTRY LEVEL FLEX  
ROOM OPTION 1**  
223 SQ.FT.



**ENTRY LEVEL FLEX  
ROOM OPTION 2**  
223 SQ.FT.



**UPPER LEVEL DUAL  
BEDROOM OPTION**  
680 SQ.FT.



**UPPER LEVEL  
LOFT OPTION**  
680 SQ.FT.

\* Floorplan is an artist rendering only and may be subject to change without notice. Builder reserves the right to make modifications and changes to building design, specifications, features and floorplans without notice. Measurements and areas shown are based on pre-construction estimates and are approximate only. E.&O.E. Windows locations and sizes on these renderings are dependent on building location and elevation as approved by the City of Calgary, confirm with your sales representative exact locations.