

colours of seton

TOWNHOMES

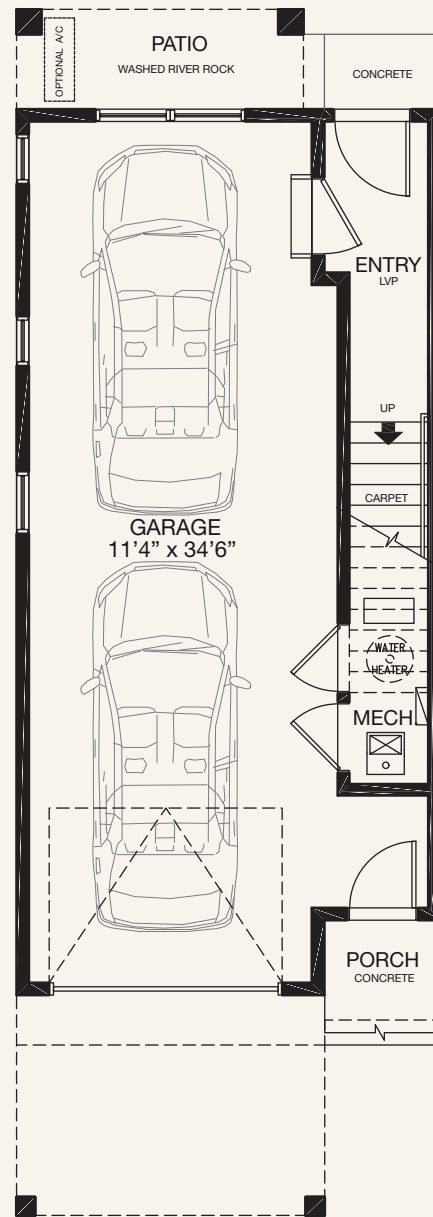
Ivory

Type D4 | 1373 Sq.Ft | 17' wide

3 Bedrooms

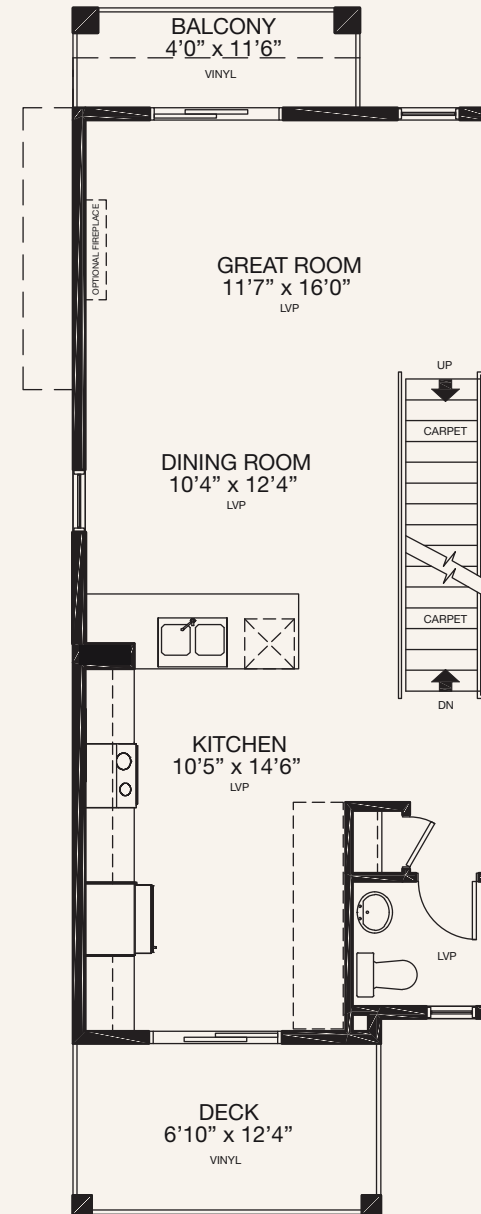
2.5 Baths

Tandem Garage



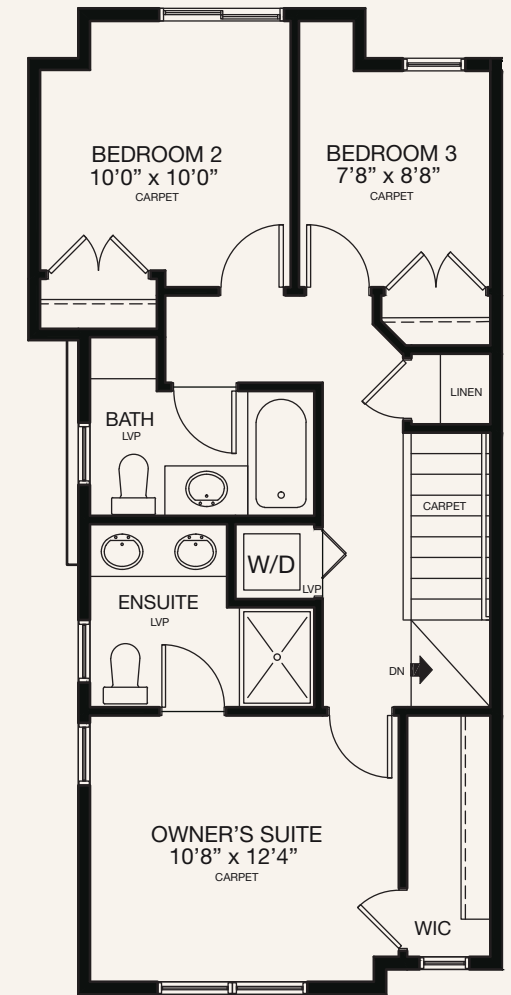
ENTRY LEVEL

63 SQ.FT.



MAIN LEVEL

633 SQ.FT.



UPPER LEVEL

678 SQ.FT.

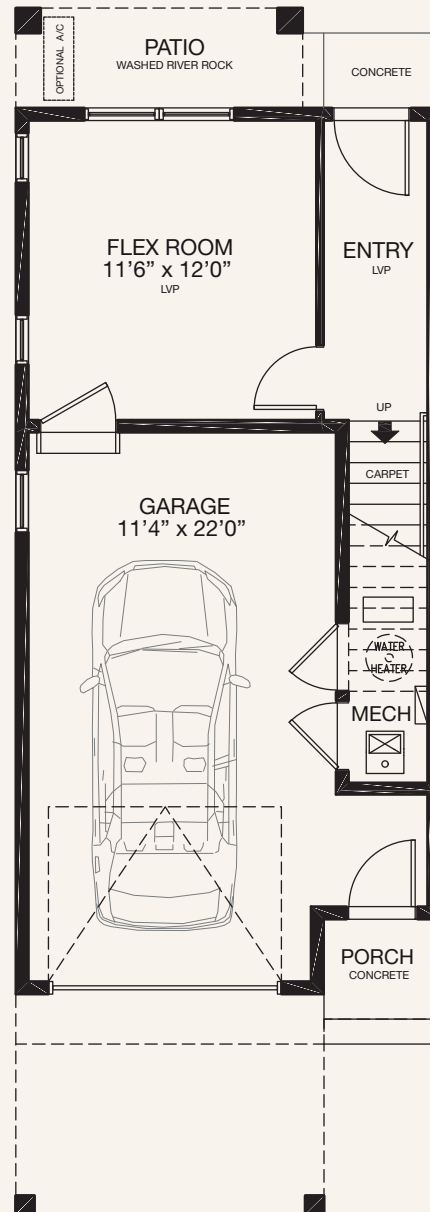
* Floorplan is an artist rendering only and may be subject to change without notice. Builder reserves the right to make modifications and changes to building design, specifications, features and floorplans without notice. Measurements and areas shown are based on pre-construction estimates and are approximate only. E.&O.E. Windows locations and sizes on these renderings are dependent on building location and elevation as approved by the City of Calgary, confirm with your sales representative exact locations.

colours of seton

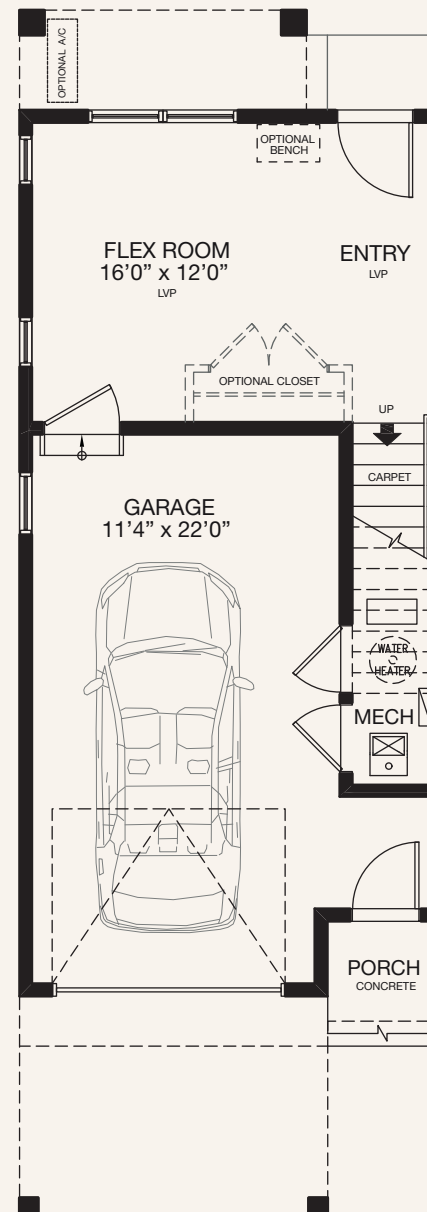
TOWNHOMES

Ivory

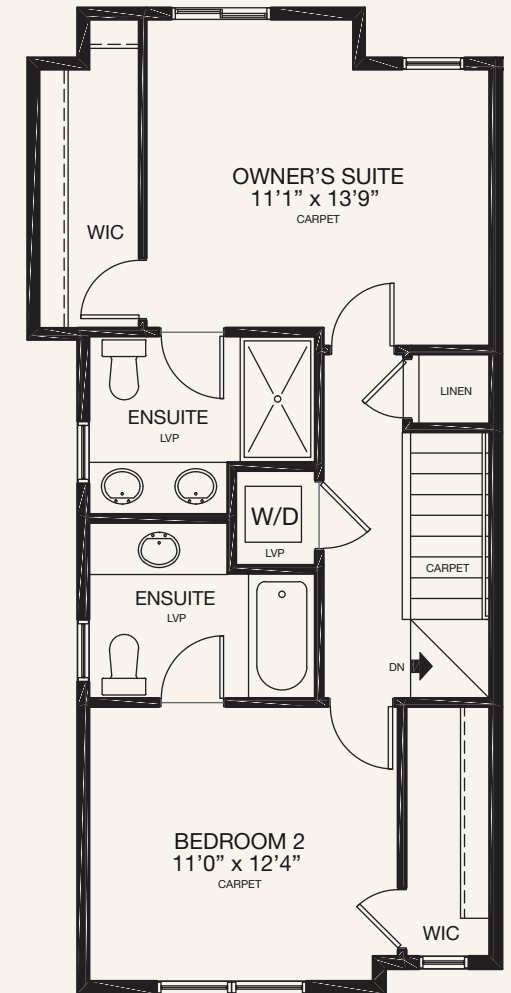
AVAILABLE OPTIONS



ENTRY LEVEL FLEX ROOM OPTION 1
223 SQ.FT.



ENTRY LEVEL FLEX ROOM OPTION 2
223 SQ.FT.



UPPER LEVEL DUAL BEDROOM OPTION
678 SQ.FT.

* Floorplan is an artist rendering only and may be subject to change without notice. Builder reserves the right to make modifications and changes to building design, specifications, features and floorplans without notice. Measurements and areas shown are based on pre-construction estimates and are approximate only. E.&O.E. Windows locations and sizes on these renderings are dependent on building location and elevation as approved by the City of Calgary, confirm with your sales representative exact locations.