



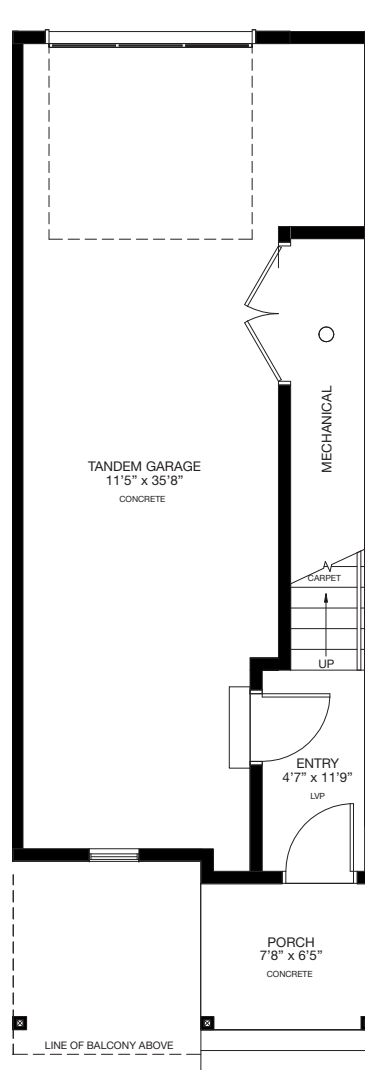
WEST/83  
TOWNHOMES  
WEST SPRINGS

**Emerson**

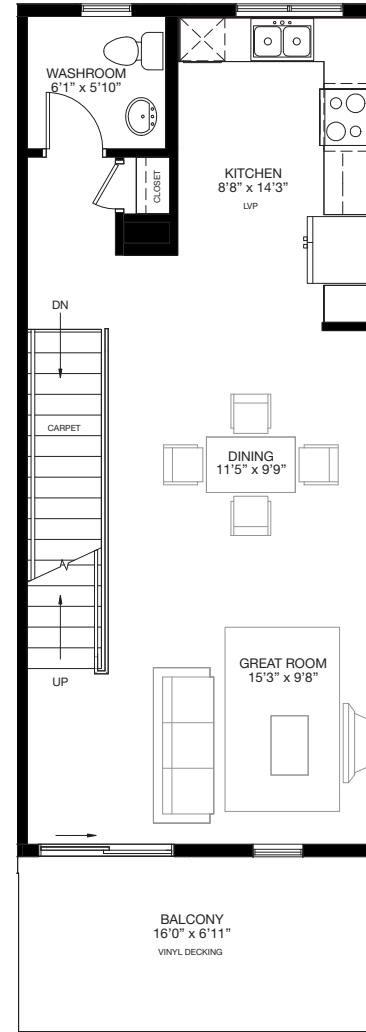
**1290 SQ.FT.**

- 2 Bedrooms
- 2½ Bathrooms
- Tandem Garage

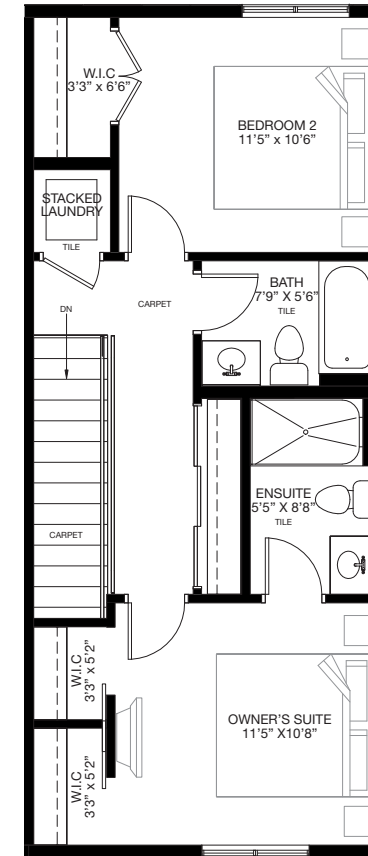
**TYPE 1 • 16' UNIT**



**ENTRY LEVEL**  
Area: 124 Sq.Ft.



**MAIN LEVEL**  
Area: 604 Sq.Ft.



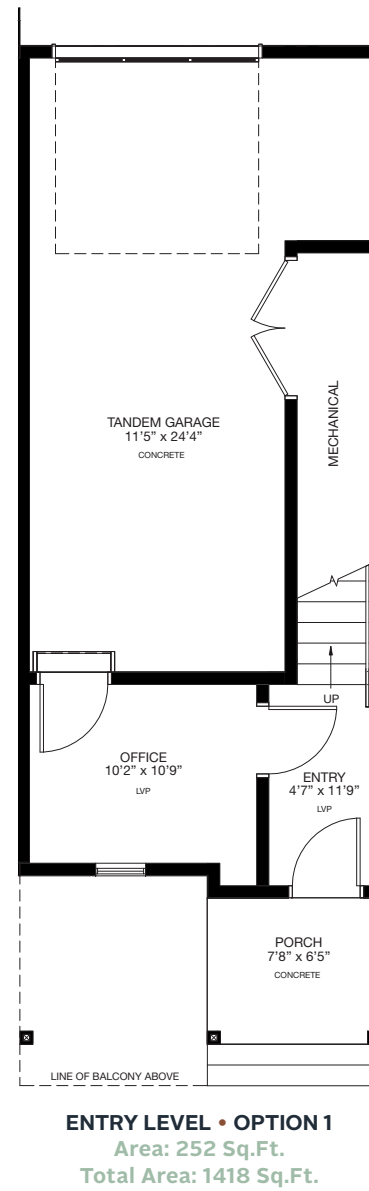
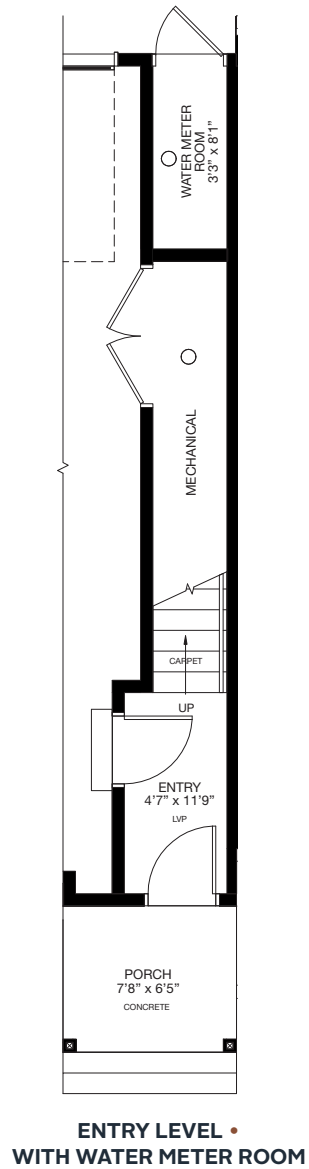
**UPPER LEVEL**  
Area: 562 Sq.Ft.

\* Floorplan is an artist rendering only and may be subject to change without notice. Builder reserves the right to make modifications and changes to building design, specifications, features and floorplans without notice. Measurements and areas shown are based on pre-construction estimates and are approximate only. E.&O.E. Windows locations and sizes on these renderings are dependent on building location and elevation as approved by the City of Calgary, confirm with your sales representative exact locations.



  
**WEST/83**  
 TOWNHOMES  
 WEST SPRINGS

Available  
**Emerson**  
**Options**  
 TYPE 1 • 16' UNIT



\* Floorplan is an artist rendering only and may be subject to change without notice. Builder reserves the right to make modifications and changes to building design, specifications, features and floorplans without notice. Measurements and areas shown are based on pre-construction estimates and are approximate only. E.&O.E. Windows locations and sizes on these renderings are dependent on building location and elevation as approved by the City of Calgary, confirm with your sales representative exact locations.