



FALL POSSESSION



# THE REGENT 1301 SQ.FT.

115 - 285 Chelsea Court



2 Bedrooms



2½ Bathrooms



Single Garage

## OPTIONS INCLUDED IN THIS HOME ARE:

- Minutes away from local amenities, including eco-park, green spaces, schools, plaza & East Hills Shopping Centre
- Hardie Board siding exterior
- Moonlight colour palette
- Entry level open flex room
- Open concept main floor
- Quartz countertops throughout
- Zebra blinds
- 11' Wide main floor deck
- 9' Knock-down ceilings on entry & main level
- Dual bedrooms with separate ensuites & walk-in closets
- 4-Piece owner's ensuite
- Stacked washer & dryer on upper floor
- A/C installed & gas line to deck

## COME VISIT OUR SHOWHOME

84 & 116 - 285 Chelsea Court, Chestermere, AB

Call May Vallo today at 825.540.0437 or

email at [chelseacourt@tricohomes.com](mailto:chelseacourt@tricohomes.com)



## SHOWHOME HOURS:

Mon - Thurs: 2pm - 8pm

Fri: Closed

Sat - Sun: 12pm - 5pm

PLUS RECEIVE YOUR OWN  
**TRICO RED CARD**



& ENJOY INCREDIBLE  
ONGOING SAVINGS &  
REWARDS FROM OUR  
PARTNERS & RETAILERS



**Chelsea  
Court**  
TOWNHOMES

**Trico  
Homes™**  
The Heart of Homebuilding®



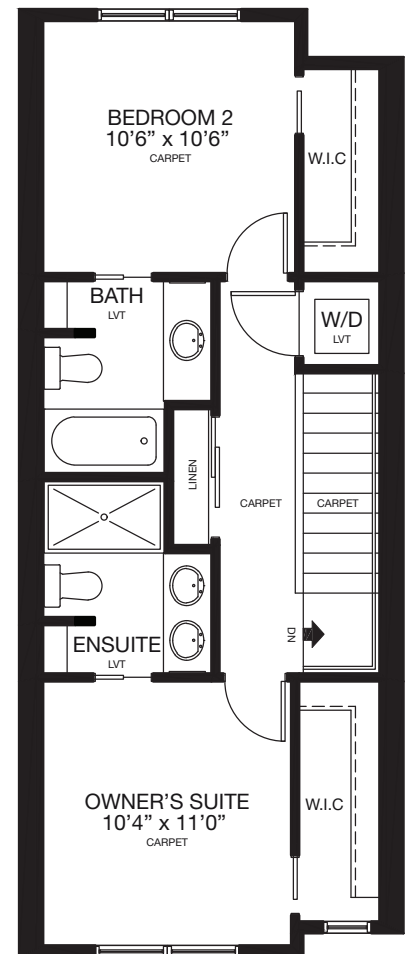
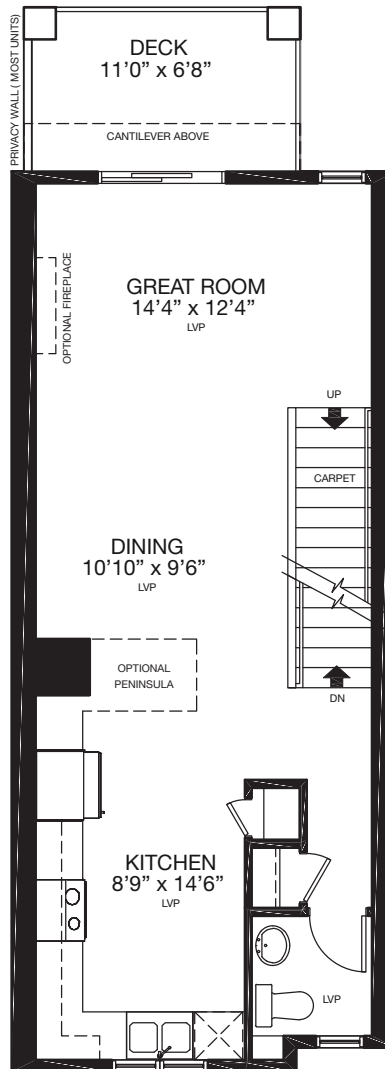
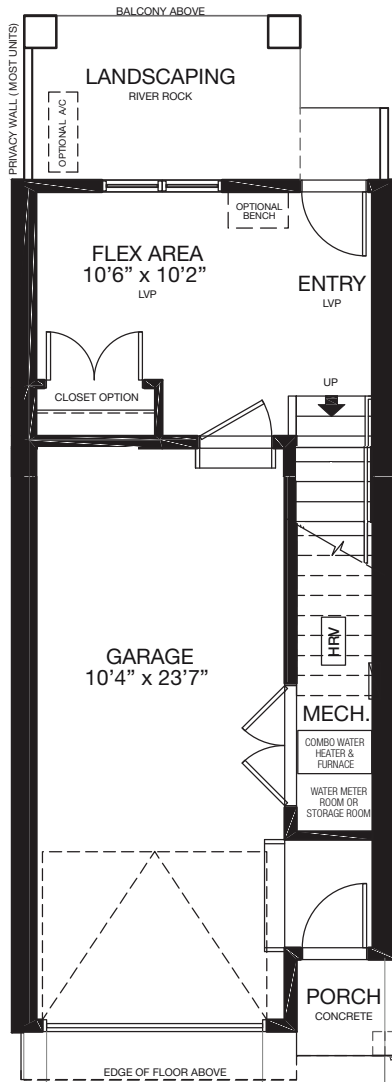
[tricohomes.com](http://tricohomes.com)



# THE REGENT

1301 SQ.FT.

115 - 285 Chelsea Court



Renderings are artist's conceptions only and may vary by community and lot selection. Prices, floorplans, specifications and dimensions are approximate and are subject to change without notice. E.&O.E. © All rights reserved, including the right if reproduction in the whole or in part without the permission of Trico Homes.

Plan updated September 30, 2025



tricohomes.com