

THE REGENT

1,301 SQ.FT.

Chelsea Court
TOWNHOMES

122, 285 Chelsea Court

2 Bedrooms ▲ 2½ Bathrooms ▲ Garage



OPTIONS INCLUDED IN THIS HOME:

- Minutes away from local amenities, including eco-park, green spaces, schools, plaza & East Hills Shopping Centre
- Hardie Board siding exterior standing shower
- Moonlight standard colour palette
- Entry level closed flex room
- 9' Knock-down ceilings on entry & main level
- Open concept main floor
- Upgraded semi-built-in kitchen appliances
- Zebra blinds
- 11' Wide deck on main level
- Dual bedrooms with separate ensuites & walk-in closets
- 4-Piece owner's ensuite
- A/C rough-ins



Plus
**RECEIVE YOUR OWN
TRICO RED CARD**



& ENJOY INCREDIBLE ONGOING SAVINGS & REWARDS FROM OUR PARTNERS & RETAILERS

VISIT OUR SHOWHOMES

84 & 116 - 285 Chelsea Court
Chestermere, AB



THE MONARCH & THE REGENT

Showhome Hours:

MON - THURS: 2PM - 8PM
FRI: Closed
SAT - SUN: 12PM - 5PM

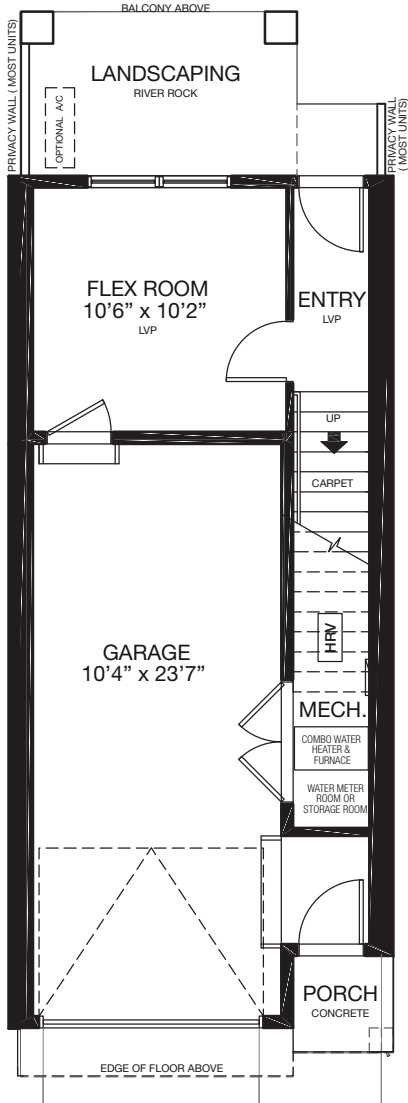
Contact May Vallo or Sam Bibanco today

CALL: 852.540.0437 | **EMAIL:** mayvallo@tricohomes.com

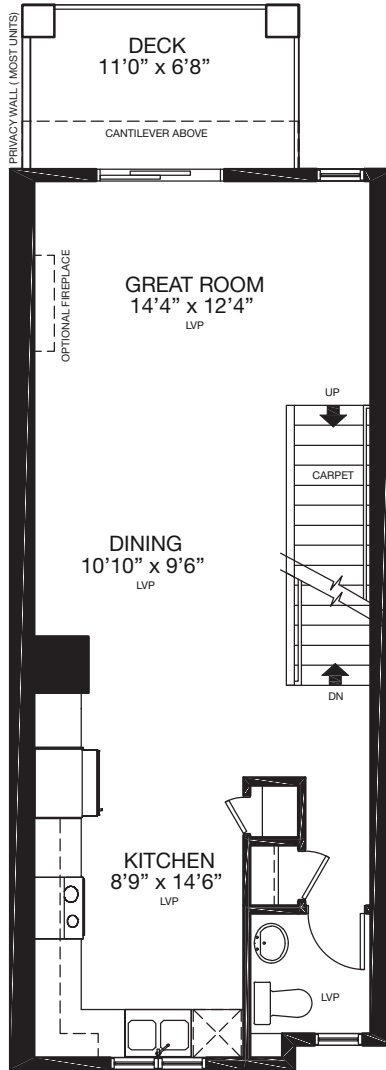


Trico Homes™
tricohomes.com

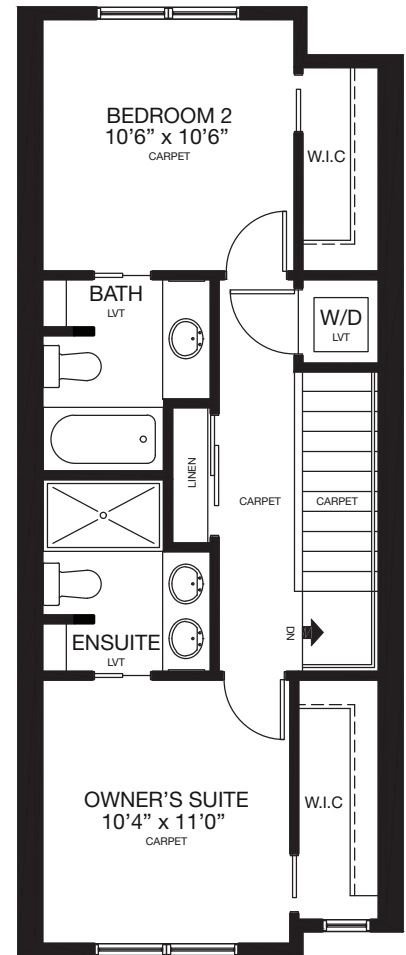
ENTRY
160 SQ.FT.



MAIN
559 SQ.FT.



UPPER
582 SQ.FT.



trichomes.com

Renderings are artist's conceptions only and may vary by community and lot selection. Prices, floorplans, specifications and dimensions are approximate and are subject to change without notice. E.&O.E. © All rights reserved, including the right if reproduction in the whole or in part without the permission of Trico Homes. TC-30744 Plan updated Mar 31, 2026.