

THE REGENT

1,344 SQ.FT.

Chelsea Court
TOWNHOMES

124, 285 Chelsea Court

2 Bedrooms ▲ 2½ Bathrooms ▲ Garage



OPTIONS INCLUDED IN THIS HOME:

- Minutes away from local amenities, including eco-park, green spaces, schools, plaza & East Hills Shopping Centre
- Hardie Board siding exterior standing shower
- Entry level flex room with bathroom
- 9' Knock-down ceilings on entry & main level
- Open concept main floor
- Stainless steel appliances in kitchen
- Zebra blinds
- 11' Wide deck on main level
- Dual bedrooms with separate ensuites & walk-in closets
- 4-Piece owner's ensuite



Plus
**RECEIVE YOUR OWN
TRICO RED CARD**



& ENJOY INCREDIBLE ONGOING SAVINGS & REWARDS FROM OUR PARTNERS & RETAILERS

VISIT OUR SHOWHOMES

84 & 116 - 285 Chelsea Court
Chestermere, AB



THE MONARCH & THE REGENT

Showhome Hours:

MON - THURS: 2PM - 8PM
FRI: Closed
SAT - SUN: 12PM - 5PM

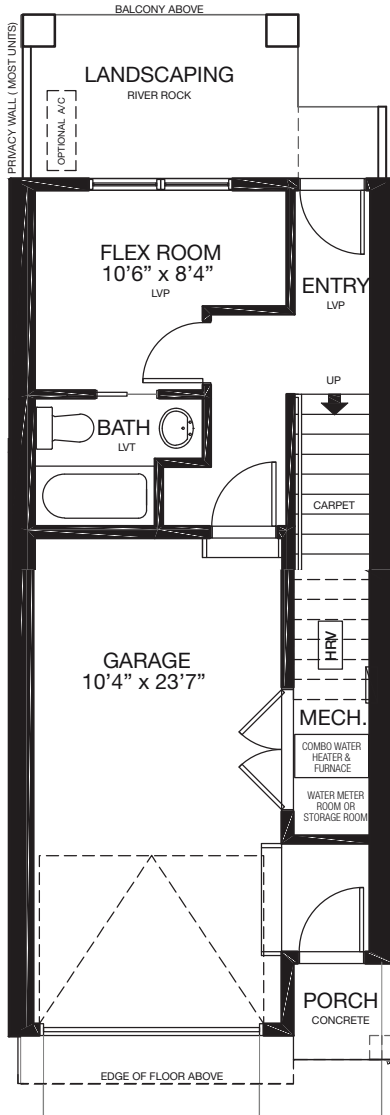
Contact May Vallo or Sam Bibanco today

CALL: 852.540.0437 | **EMAIL:** mayvallo@tricohomes.com

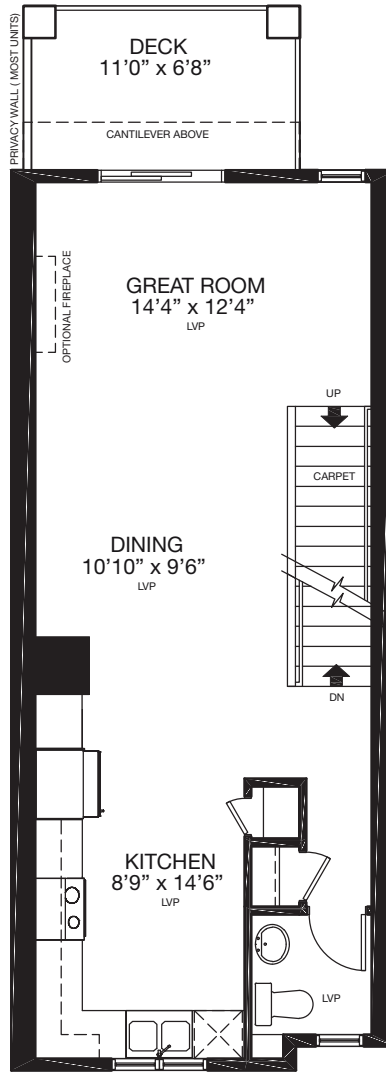


Trico Homes™
tricohomes.com

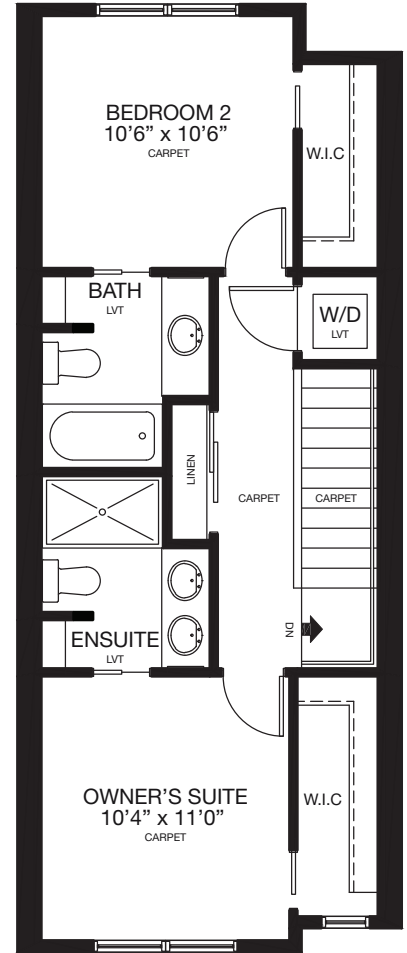
ENTRY
203 SQ.FT.



MAIN
559 SQ.FT.



UPPER
582 SQ.FT.



Renderings are artist's conceptions only and may vary by community and lot selection. Prices, floorplans, specifications and dimensions are approximate and are subject to change without notice. E.&OE. © All rights reserved, including the right if reproduction in the whole or in part without the permission of Trico Homes. TC-30744 Plan updated Mar 31, 2026.



tricohomes.com