

THE REGENT

1,179 SQ.FT.

Chelsea Court
TOWNHOMES

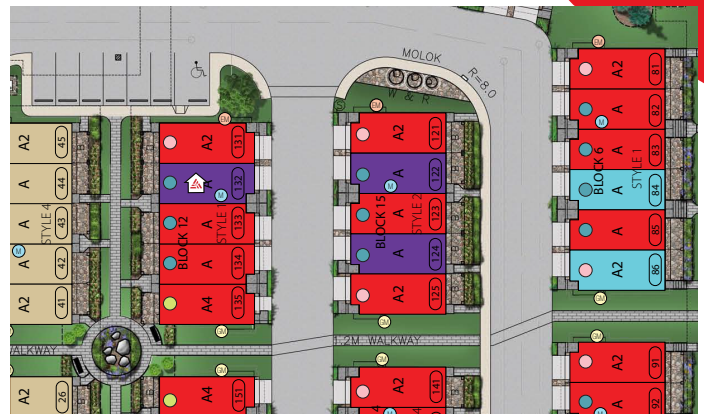
132, 285 Chelsea Court

2 Bedrooms ▲ 2½ Bathrooms ▲ Tandem Garage



OPTIONS INCLUDED IN THIS HOME:

- Minutes away from local amenities, including eco-park, green spaces, schools, plaza & East Hills Shopping Centre
- Hardie Board siding exterior standing shower
- Moonlight standard color palette
- 9' Knock-down ceilings on entry & main level
- Open concept main floor
- Stainless steel appliances in kitchen
- Quartz countertops
- Zebra blinds
- 11' Wide deck on main level
- Dual bedrooms with separate ensuites & walk-in closets
- 4-Piece owner's ensuite
- A/C rough-ins



Plus
**RECEIVE YOUR OWN
TRICO RED CARD**



& ENJOY INCREDIBLE ONGOING SAVINGS & REWARDS FROM OUR PARTNERS & RETAILERS

VISIT OUR SHOWHOMES

84 & 116 - 285 Chelsea Court
Chestermere, AB



THE MONARCH & THE REGENT

Contact May Vallo or Sam Bibanco today

CALL: 852.540.0437 | **EMAIL:** mayvallo@tricohomes.com

Showhome Hours:

MON - THURS: 2PM - 8PM

FRI: Closed

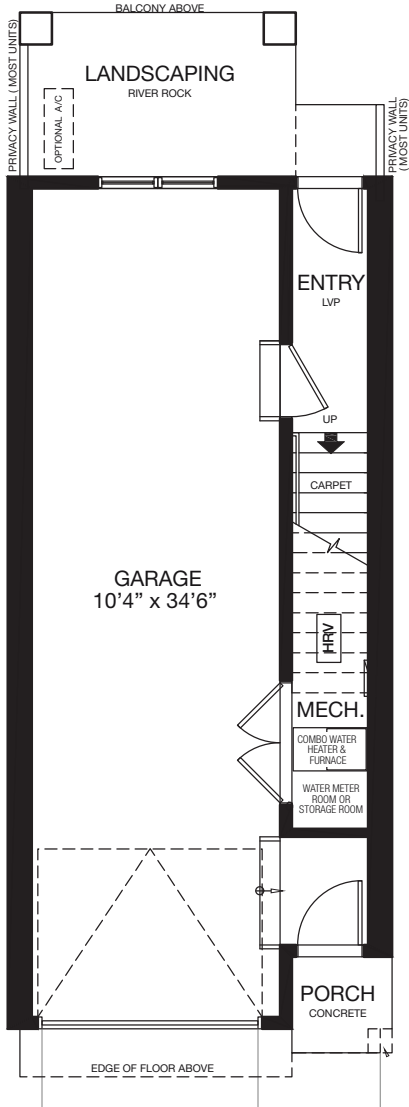
SAT - SUN: 12PM - 5PM



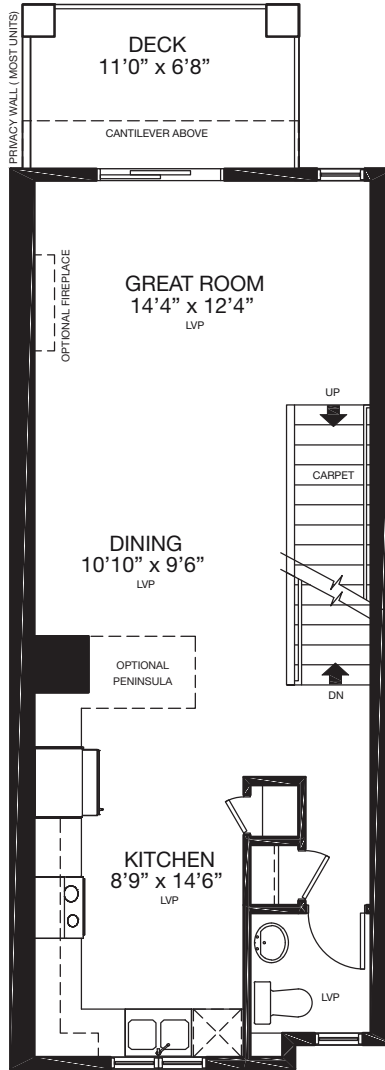
Trico Homes™

tricohomes.com

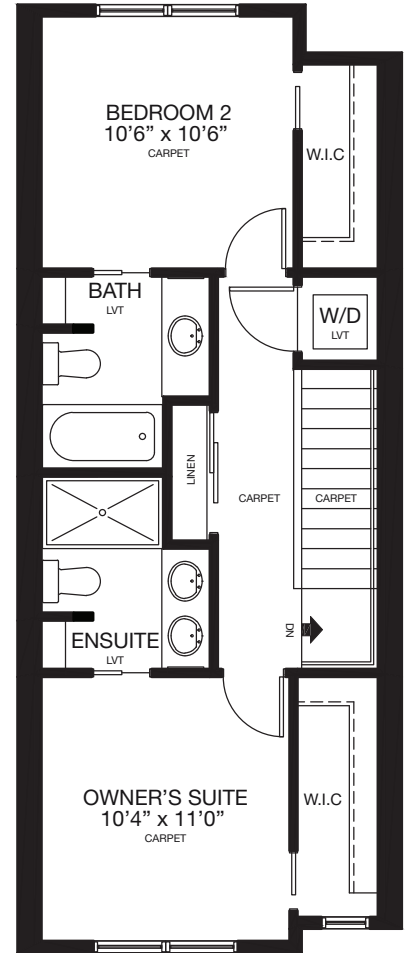
ENTRY
38 SQ.FT.



MAIN
559 SQ.FT.



UPPER
582 SQ.FT.



Renderings are artist's conceptions only and may vary by community and lot selection. Prices, floorplans, specifications and dimensions are approximate and are subject to change without notice. E.&OE. © All rights reserved, including the right if reproduction in the whole or in part without the permission of Trico Homes. TC-30744 Plan updated Mar 31, 2026.



tricohomes.com