

THE SPRINGHILL

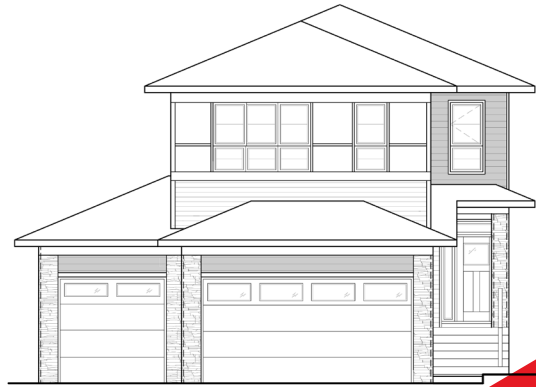
2,684 SQ.FT.



151 Dawson Wharf Mount

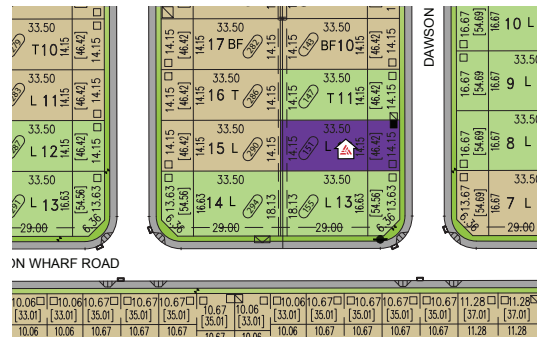
5 Bedrooms ▲ 4 Bathrooms ▲ Triple Garage

IMMEDIATE POSSESSION

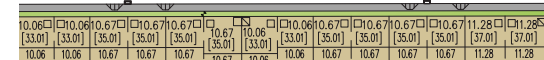


OPTIONS INCLUDED IN THIS HOME

- 46' Wide homesite
- Main floor bedroom & full bathroom
- Main floor flex room
- Built-in kitchen appliances
- Spice kitchen
- Electric fireplace in great room
- Central bonus room on upper floor
- 4 Bedrooms on upper floor with dual ensuite layout
- 5-Piece owner's ensuite with 10mm glass & tile shower
- Full laundry room with sink
- Separate side entrance
- Basement suite rough-ins
- 13'x10' Rear deck with stairs to grade



IN WHARF ROAD



Plus
RECEIVE YOUR OWN
TRICO RED CARD



AND ENJOY INCREDIBLE ONGOING SAVINGS AND REWARDS FROM OUR PARTNERS AND RETAILERS

VISIT OUR SHOWHOME

337 Dawson Wharf Mount
Chestermere, AB



SHOWHOME THE SPRINGFIELD

Showhome hours:
MON - THURS: 2 - 8PM
FRI: Closed
SAT - SUN: 12 - 5PM



tricohomes.com

Contact Kaylee Pilon
CALL: 587.231.6654
EMAIL: kayleepilon@tricohomes.com

BUILDING IN 31 COMMUNITIES:
FRONT-GARAGE HOMES | LANED HOMES | DUPLEXES | TOWNHOMES | CONDOS

THE SPRINGHILL

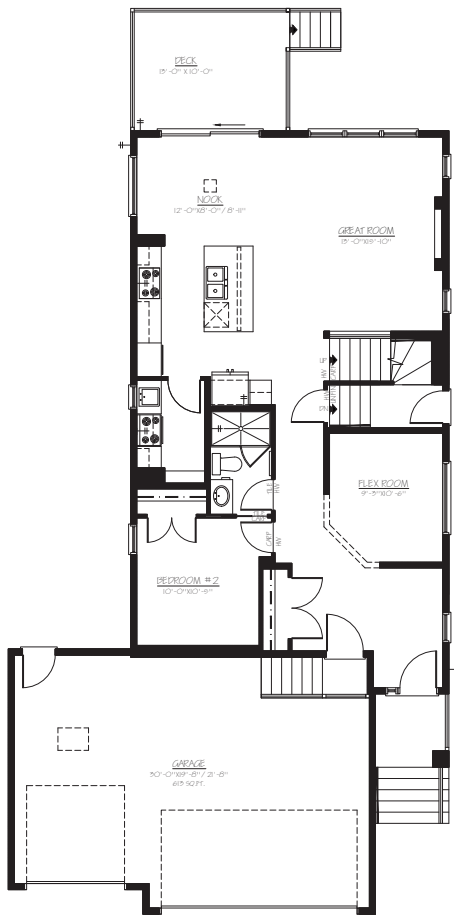
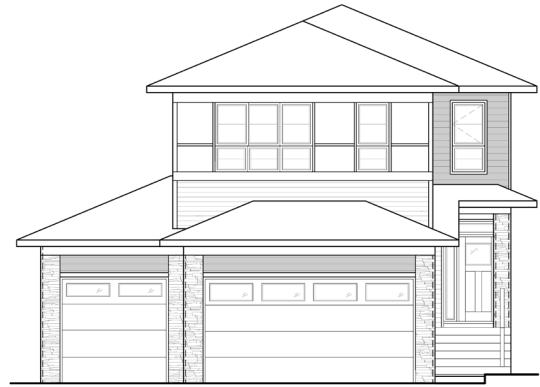
2,684 SQ.FT.



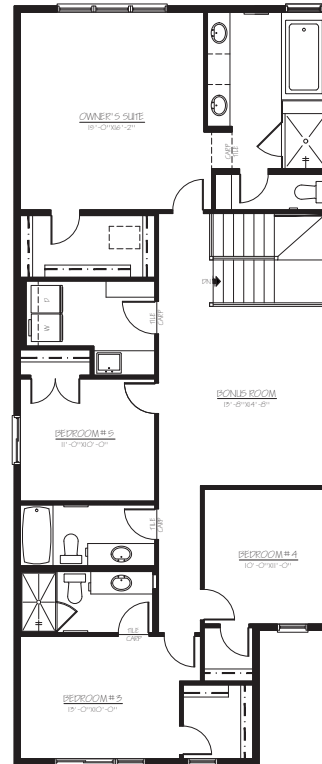
151 Dawson Wharf Mount

5 Bedrooms ▲ 4 Bathrooms ▲ Triple Garage

IMMEDIATE POSSESSION



MAIN
1138 SQ.FT



UPPER
1546 SQ.FT



Platinum member
2004 - 2025

Top-rated
Homebuilder



4.4 ★★★★★



tricohomes.com

Renderings are artist's conceptions only and vary by community and lot selection. Prices, floorplans, specifications and dimensions are approximate and are subject to change without notice. E.&O.E. All rights reserved, including the right if reproduction in the whole or in part without the permission of Trico Homes. Plan updated February 3, 2026

BUILDING IN 31 COMMUNITIES:
FRONT-GARAGE HOMES | LANED HOMES | DUPLEXES | TOWNHOMES | CONDOS