

IMMEDIATE POSSESSION

THE CONCORD ZLL

2,293 SQ.FT.



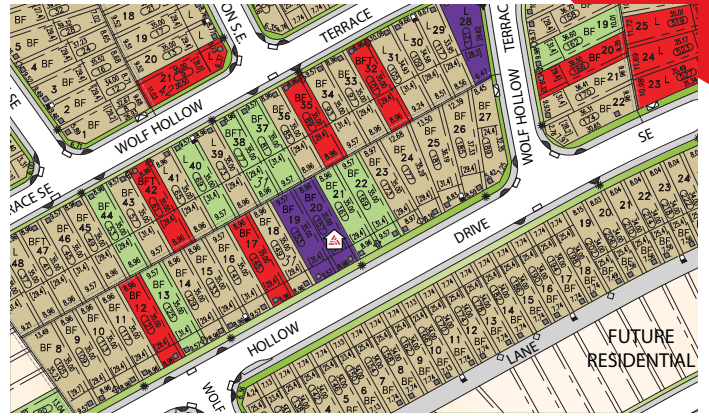
157 Wolf Hollow Rise SE

4 Bedrooms ▲ 3 Bathrooms ▲ Double Garage



OPTIONS INCLUDED IN THIS HOME:

- South-facing homesite with proximity to Bow River
- Main floor bedroom and full bathroom
- Open concept main floor
- Stainless steel appliances in kitchen
- Electric fireplace in great room
- Walk-through pantry
- Central bonus room & 3 bedrooms on upper floor
- 5-Piece owner's ensuite with corner soaker tub
- Full laundry room on upper floor
- 9' Foundation
- Gas line to deck
- 16' Wide deck with aluminum railings & stairs to grade



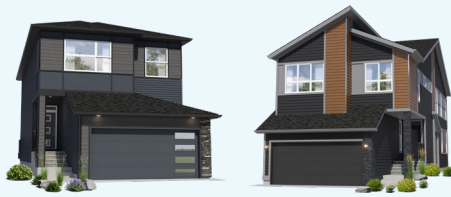
Plus
RECEIVE YOUR OWN
TRICO RED CARD



& ENJOY INCREDIBLE ONGOING SAVINGS & REWARDS FROM OUR PARTNERS & RETAILERS

VISIT OUR SHOWHOME

41 & 45 Wolf Hollow Common
Chestermere, AB



THE HARRINGTON

THE ARIA

Showhome Hours:

MON - THURS: 2PM - 8PM

FRI: Closed

SAT - SUN: 12PM - 5PM

Contact Clint Pilon

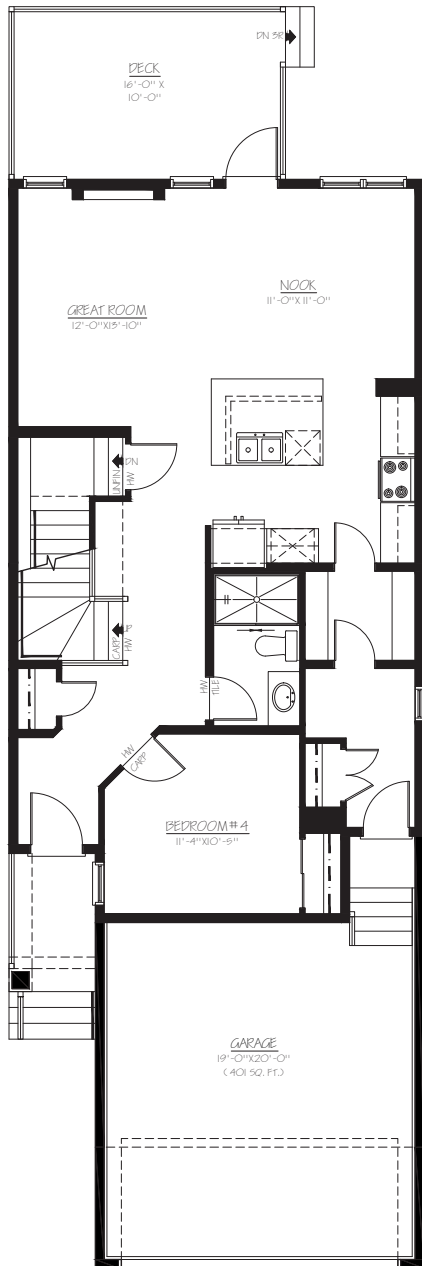
CALL: 403.457.0856 | EMAIL: clintpilon@tricohomes.com



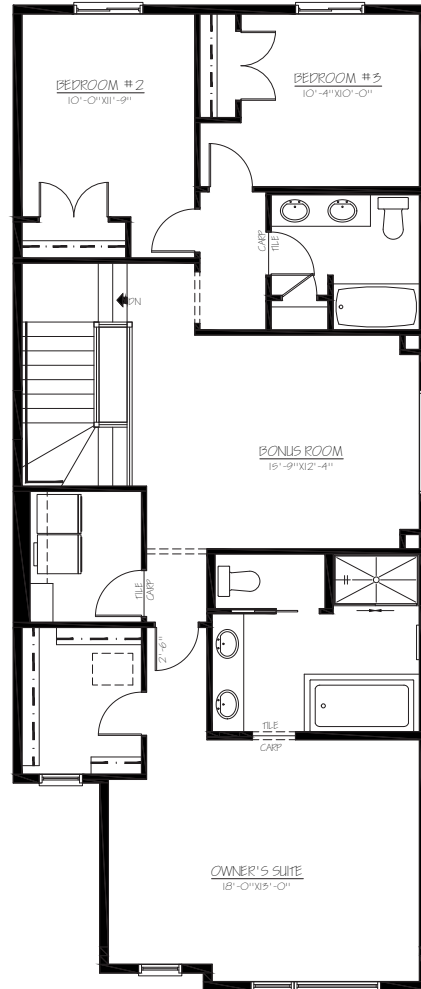
Trico Homes™

tricohomes.com

MAIN
991 SQ.FT.



UPPER
1302 SQ.FT.



tricohomes.com

Renderings are artist's conceptions only and may vary by community and lot selection. Prices, floorplans, specifications and dimensions are approximate and are subject to change without notice. E.&OE. © All rights reserved, including the right if reproduction in the whole or in part without the permission of Trico Homes. Plan updated May 28, 2026.