

# THE OXFORD II ZLL

2,067 SQ.FT.

**BELMONT**

540 Belmont Place SW

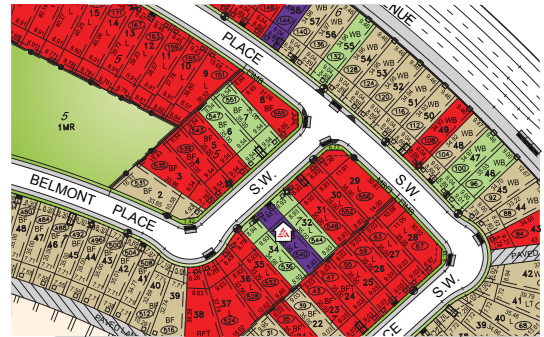
3 Bedrooms ▲ 2½ Bathrooms ▲ Double Garage

FEBRUARY POSSESSION



## OPTIONS INCLUDED IN THIS HOME

- Interior homesite near park
- 2-Bedroom basement secondary suite
- Main floor flex room
- 42" Upper cabinetry & crown moulding in kitchen
- Electric fireplace in great room
- Hardwood, tile & carpet throughout
- Central bonus room on upper floor
- Pot lights added to great room & bonus room
- 5-Piece owner's ensuite
- Rear deck with stairs to grade & gas line to deck
- 9' Foundation



*Plus*  
RECEIVE YOUR OWN  
TRICO RED CARD



AND ENJOY INCREDIBLE ONGOING SAVINGS AND REWARDS FROM OUR PARTNERS AND RETAILERS

## VISIT OUR SHOWHOME

23 Belmont Place SW  
Calgary AB

Contact Will Jorgenson

CALL: 403.764.0301

EMAIL: willjorgenson@tricohomes.com



SHOWHOME THE OXFORD II

Showhome hours:  
MON - THURS: 2 - 8PM  
FRI: Closed  
SAT - SUN: 12 - 5PM



[tricohomes.com](http://tricohomes.com)

**BUILDING IN 31 COMMUNITIES:**  
FRONT-GARAGE HOMES | LANED HOMES | DUPLEXES | TOWNHOMES | CONDOS

# THE OXFORD II ZLL

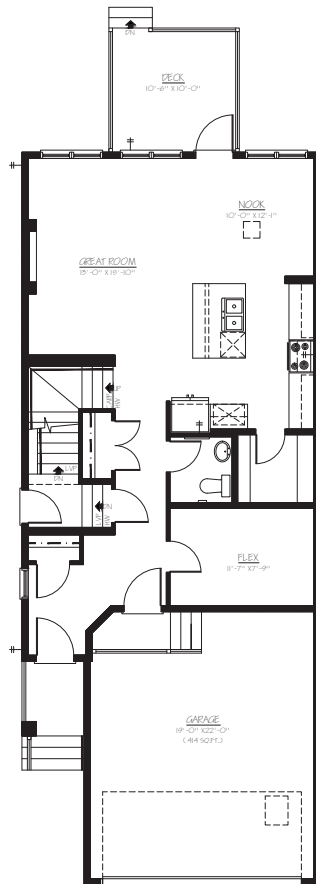
2,067 SQ.FT.

**BELMONT**

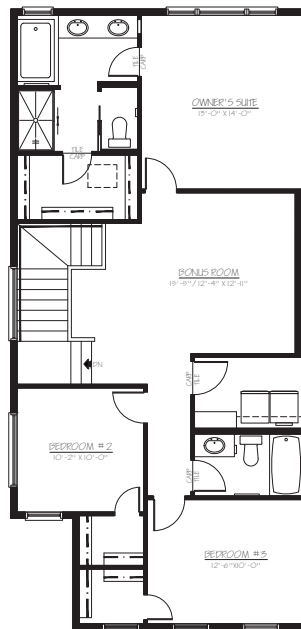
540 Belmont Place SW

3 Bedrooms ▲ 2½ Bathrooms ▲ Double Garage

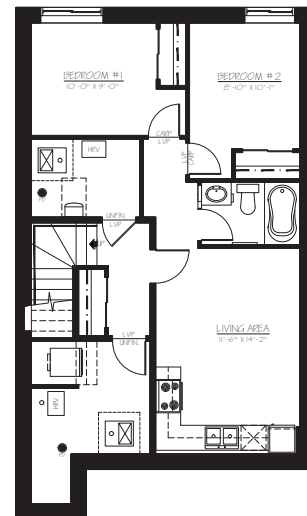
FEBRUARY POSSESSION



**MAIN**  
912 SQ.FT



**UPPER**  
1155 SQ.FT



**SECONDARY SUITE**  
608 SQ.FT



Platinum member  
2004 - 2025

Top-rated  
Homebuilder



4.4 ★★★★★



[tricohomes.com](http://tricohomes.com)

Renderings are artist's conceptions only and vary by community and lot selection. Prices, floorplans, specifications and dimensions are approximate and are subject to change without notice. E.&OE. © All rights reserved, including the right if reproduction in the whole or in part without the permission of Trico Homes. Plan updated January 16, 2026

**BUILDING IN 31 COMMUNITIES:**  
FRONT-GARAGE HOMES | LANED HOMES | DUPLEXES | TOWNHOMES | CONDOS