



2026 POSSESSION



THE BRAVO 1600 SQ.FT.

623 Chelsea Pier Run



3 Bedrooms



3 Bathrooms

OPTIONS INCLUDED IN THIS HOME ARE:

- South-facing backyard
- Open concept main floor
- Walk-in pantry
- Hardwood, tile & carpet throughout
- 4-Piece owner's ensuite
- Spacious owner's suite walk-in closet
- Legal secondary suite rough-ins in basement with separate entrance
- Rear deck with stairs to grade & aluminum railing
- Paved lane & concrete parking pad
- 9' Foundation

COME VISIT OUR SHOWHOMES

419 Chelsea Port Crossing, Chestermere AB

Call Matthew Lysaght or David Bell today at

403.651.9666 or email at chelsealined@tricohomes.com



SHOWHOME HOURS:

Mon - Thurs: 2pm - 8pm

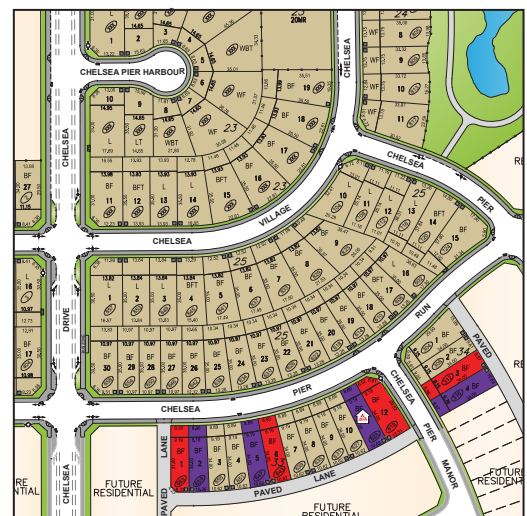
Fri: Closed

Sat - Sun: 12pm - 5pm

ASK ABOUT OUR TRICO RED CARD REWARDS



YOU DECIDE
HOW TO REWARD
YOURSELF!



CHELSEA
CHESTERMERE

Trico
Homes™
The Heart of Homebuilding®



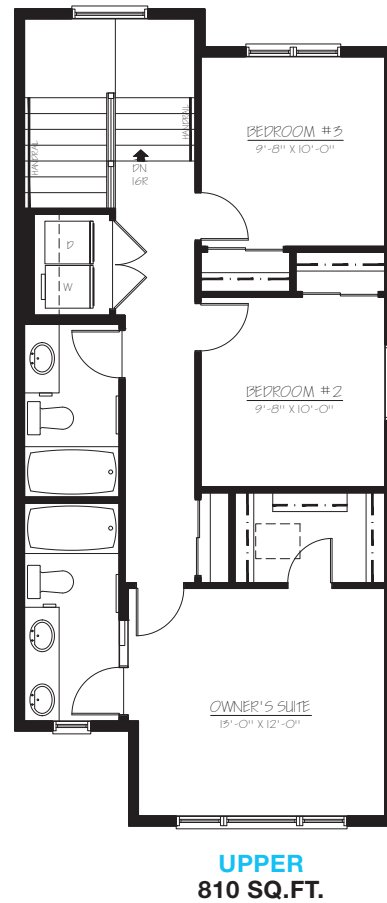
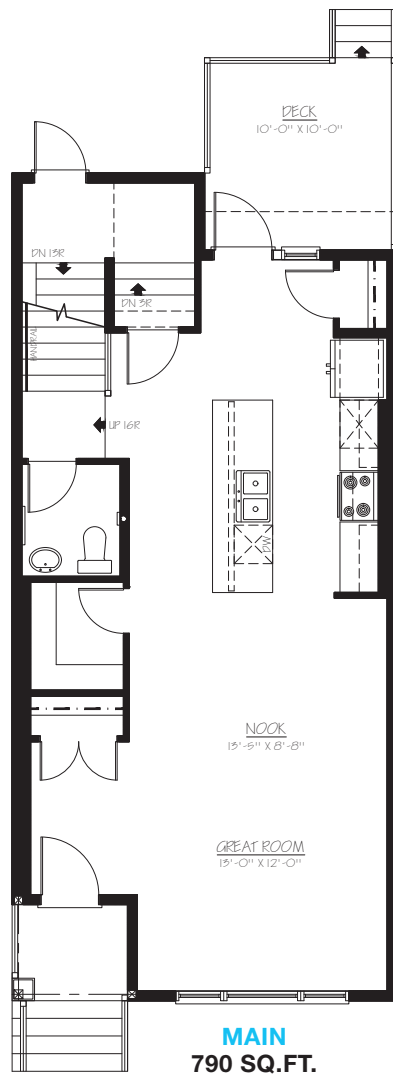
tricohomes.com



THE BRAVO

1600 SQ.FT.

623 Chelsea Pier Run



Renderings are artist's conceptions only and may vary by community and lot selection. Prices, floorplans, specifications and dimensions are approximate and are subject to change without notice. E.&O.E. © All rights reserved, including the right of reproduction in the whole or in part without the permission of Trico Homes.

Plan updated November 7, 2025



tricohomes.com