

THE BRAVO

1,600 SQ.FT.

CHELSEA
CHESTERMERE

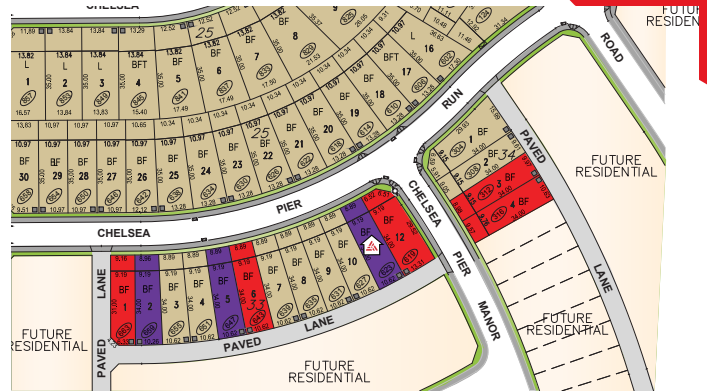
623 Chelsea Pier Run

3 Bedrooms ▲ 3 Bathrooms



OPTIONS INCLUDED IN THIS HOME:

- South-facing backyard
- Open concept main floor
- Walk-in pantry
- Hardwood, tile & carpet throughout
- 4-Piece owner's ensuite
- Spacious owner's suite walk-in closet
- Legal secondary suite rough-ins in basement with separate entrance
- Rear deck with stairs to grade & aluminum railing
- Paved lane & concrete parking pad
- 9' Foundation



Plus
**RECEIVE YOUR OWN
TRICO RED CARD**



& ENJOY INCREDIBLE ONGOING SAVINGS & REWARDS FROM OUR PARTNERS & RETAILERS

VISIT OUR SHOWHOME

419 Chelsea Port Crossing
Chestermere, AB



THE RAEYA

Showhome Hours:

MON - THURS: 2PM - 8PM

FRI: Closed

SAT - SUN: 12PM - 5PM

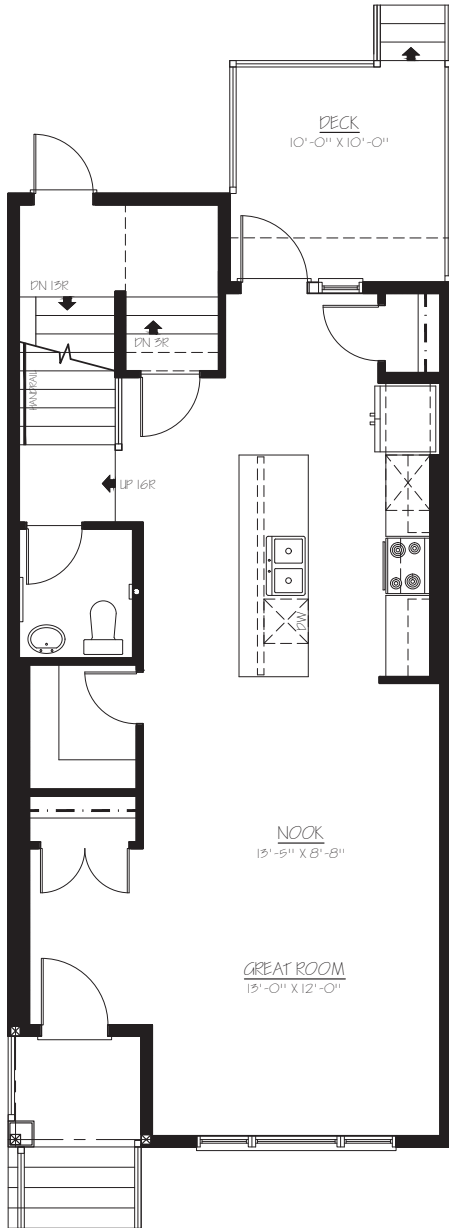
Contact May Vallo

CALL: 587.496.8192 | **EMAIL:** mayvallo@tricohomes.com

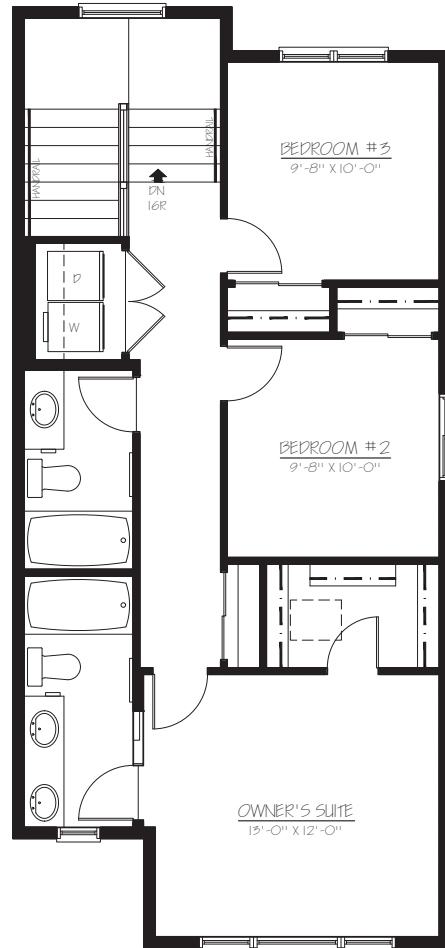


Trico Homes™
tricohomes.com

MAIN
790 SQ.FT.



UPPER
810 SQ.FT.



Renderings are artist's conceptions only and may vary by community and lot selection. Prices, floorplans, specifications and dimensions are approximate and are subject to change without notice. E.&OE. © All rights reserved, including the right if reproduction in the whole or in part without the permission of Trico Homes. Plan updated May 27, 2026.



tricohomes.com