

# THE BRAVO

1,600 SQ.FT.

**CHELSEA**  
CHESTERMERE

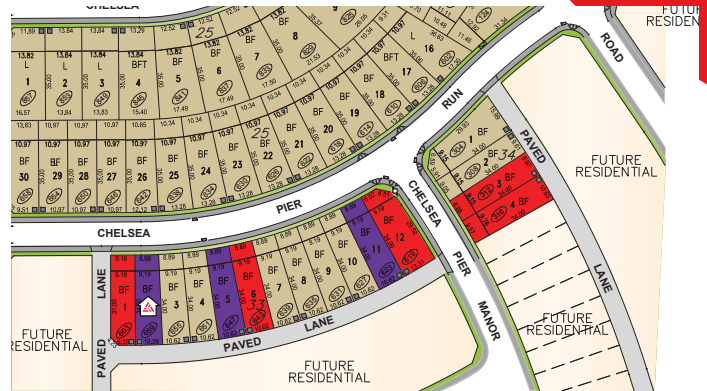
659 Chelsea Pier Run

3 Bedrooms ▲ 3 Bathrooms



## OPTIONS INCLUDED IN THIS HOME:

- South-facing backyard
- Open concept main floor
- Hardwood, tile & carpet throughout
- Spacious walk-in pantry in kitchen
- 4-Piece owner's ensuite
- Legal secondary suite rough-ins in basement with separate entry
- Rear deck with stairs to grade & aluminum railing
- 9' Foundation



*Plus*  
**RECEIVE YOUR OWN  
TRICO RED CARD**



**& ENJOY INCREDIBLE ONGOING SAVINGS & REWARDS FROM OUR PARTNERS & RETAILERS**

## VISIT OUR SHOWHOME

419 Chelsea Port Crossing  
Chestermere, AB



THE RAEYA

### Showhome Hours:

**MON - THURS: 2PM - 8PM**

**FRI: Closed**

**SAT - SUN: 12PM - 5PM**

**Contact May Vallo**

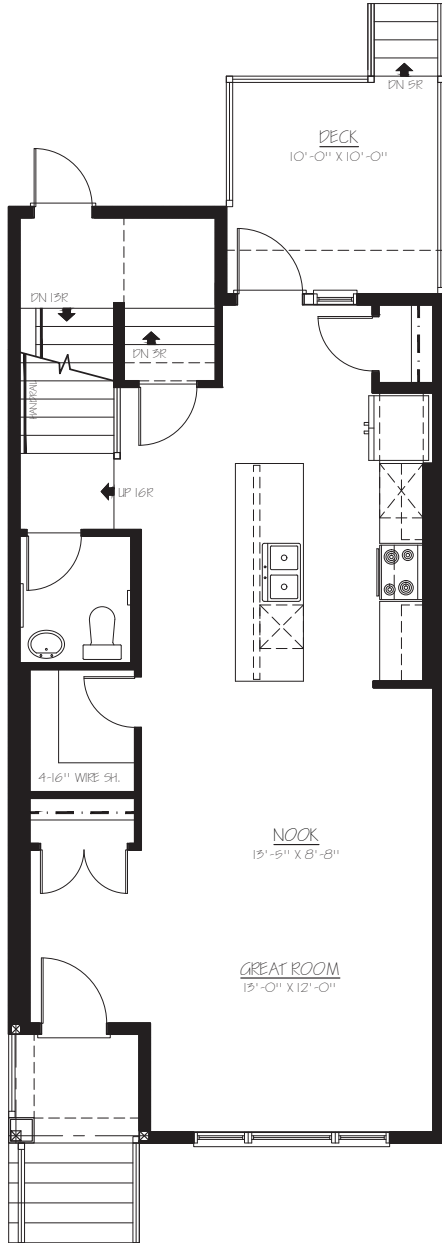
**CALL: 587.496.8192 | EMAIL: mayvallo@tricohomes.com**



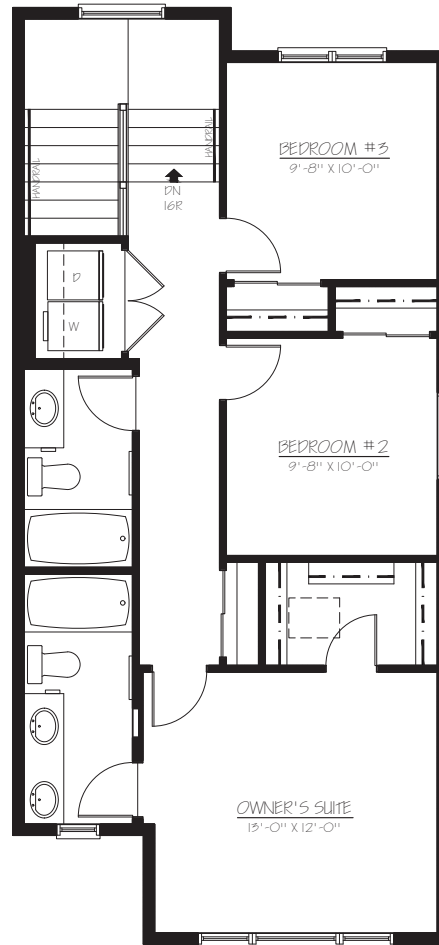
Trico Homes™

[tricohomes.com](http://tricohomes.com)

**MAIN**  
790 SQ.FT.



**UPPER**  
810 SQ.FT.



Renderings are artist's conceptions only and may vary by community and lot selection. Prices, floorplans, specifications and dimensions are approximate and are subject to change without notice. E.&OE. © All rights reserved, including the right if reproduction in the whole or in part without the permission of Trico Homes. Plan updated May 27, 2026.



tricohomes.com