

# THE BRAVO

1,600 SQ.FT.

**CHELSEA**  
CHESTERMERE

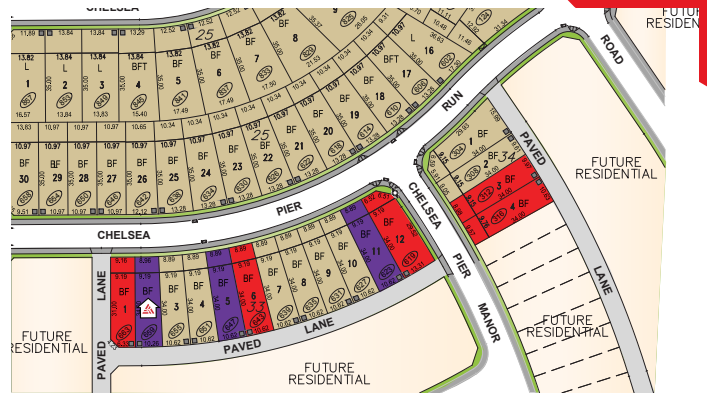
659 Chelsea Pier Run

3 Bedrooms ▲ 3 Bathrooms



## OPTIONS INCLUDED IN THIS HOME:

- South-facing backyard
- Open concept main floor
- Hardwood, tile & carpet throughout
- Spacious walk-in pantry in kitchen
- 4-Piece owner's ensuite
- Basement rough-ins & separate entry
- Rear deck with stairs to grade & aluminum railing
- 9' Foundation
- 20' x 21' Concrete parking pad with curb walls



*Plus*  
RECEIVE YOUR OWN  
**TRICO RED CARD**



& ENJOY INCREDIBLE ONGOING SAVINGS & REWARDS FROM OUR PARTNERS & RETAILERS

## VISIT OUR SHOWHOME

419 Chelsea Port Crossing  
Chestermere, AB



THE RAEYA

### Showhome Hours:

MON - THURS: 2PM - 8PM

FRI: Closed

SAT - SUN: 12PM - 5PM

Contact **May Vallo**

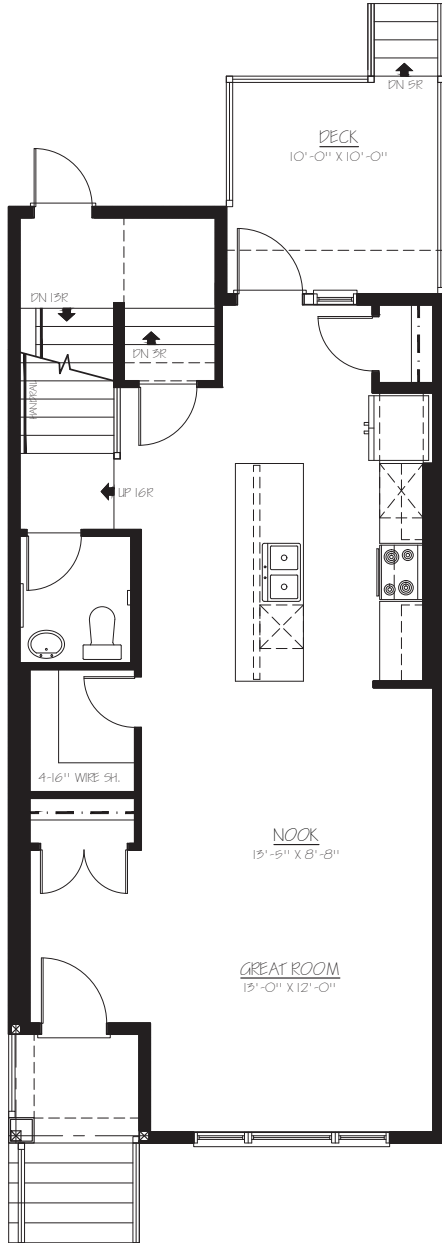
CALL: 587.496.8192 | EMAIL: [mayvallo@tricohomes.com](mailto:mayvallo@tricohomes.com)



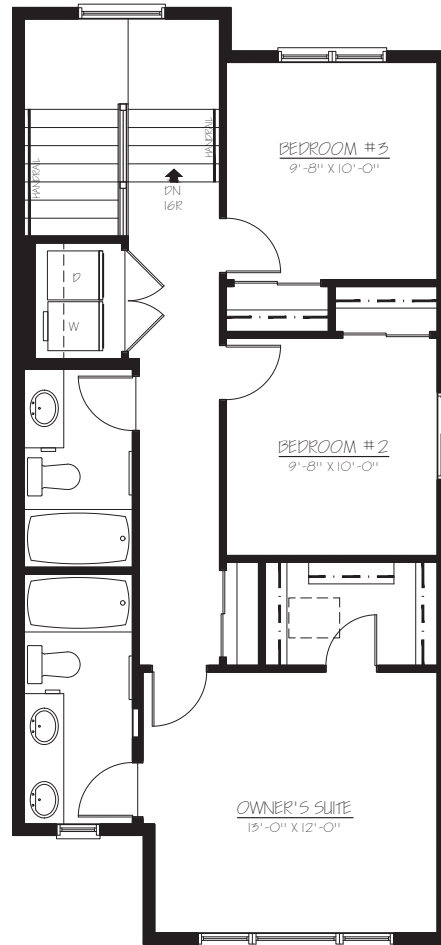
Trico Homes™

[tricohomes.com](http://tricohomes.com)

**MAIN**  
790 SQ.FT.



**UPPER**  
810 SQ.FT.



Renderings are artist's conceptions only and may vary by community and lot selection. Prices, floorplans, specifications and dimensions are approximate and are subject to change without notice. E.&OE. © All rights reserved, including the right if reproduction in the whole or in part without the permission of Trico Homes. Plan updated June 17, 2026.



tricohomes.com