

# THE REGENT

1,179 SQ.FT.

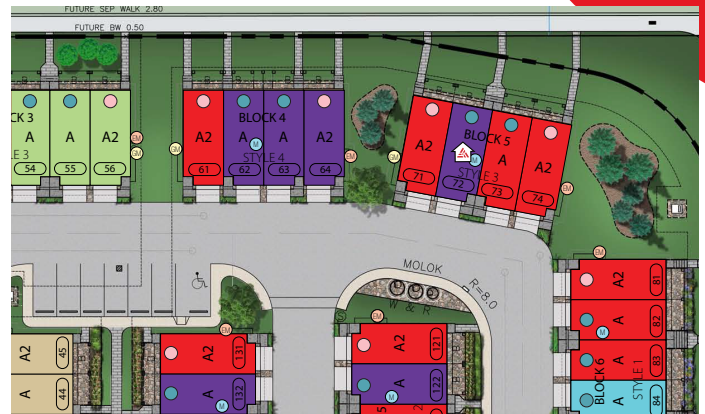
**Chelsea Court**  
TOWNHOMES

72, 285 Chelsea Court

2 Bedrooms ▲ 2½ Bathrooms ▲ Tandem Garage

## OPTIONS INCLUDED IN THIS HOME:

- Homesite facing the main road, minutes away from local amenities, including eco-park, green spaces, schools, plaza & East Hills Shopping Centre
- Hardie Board siding exterior standing shower
- Charcoal standard colour palette
- Entry level closed flex room
- 9' Knock-down ceilings on entry & main level
- Open concept main floor
- Stainless steel appliances in kitchen
- Quartz countertops
- Zebra blinds
- 11' Wide deck on main level
- Dual bedrooms with separate ensuites & walk-in closets
- 4-Piece owner's ensuite
- A/C rough-ins



*Plus*  
**RECEIVE YOUR OWN  
TRICO RED CARD**



**& ENJOY INCREDIBLE ONGOING SAVINGS & REWARDS FROM OUR PARTNERS & RETAILERS**

**VISIT OUR  
SHOWHOMES**

84 & 116 - 285 Chelsea Court  
Chestermere, AB



THE MONARCH & THE REGENT

**Showhome Hours:**

**MON - THURS: 2PM - 8PM**

**FRI: Closed**

**SAT - SUN: 12PM - 5PM**

**Contact May Vallo or Sam Bibanco today**

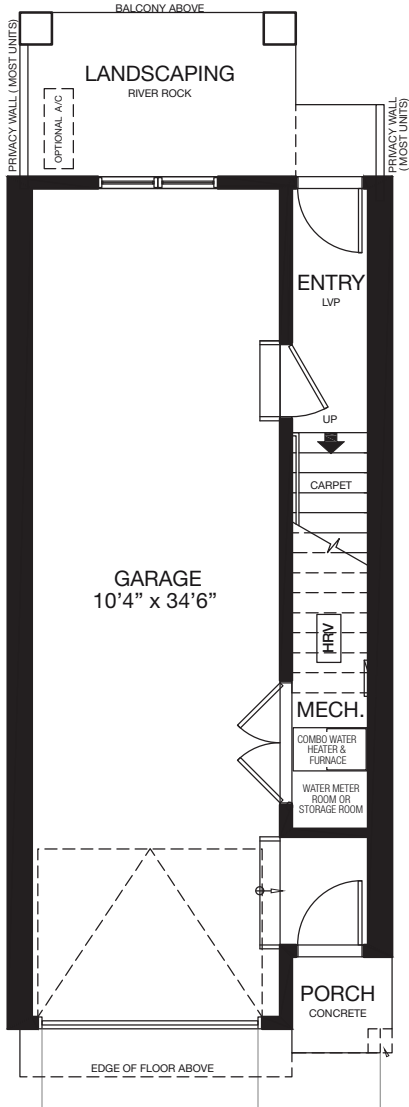
**CALL: 852.540.0437 | EMAIL: mayvallo@tricohomes.com**



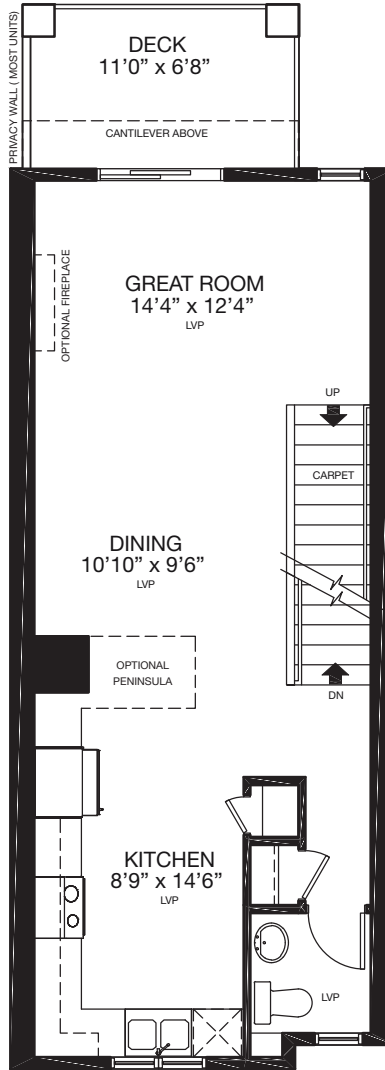
Trico Homes™

[tricohomes.com](http://tricohomes.com)

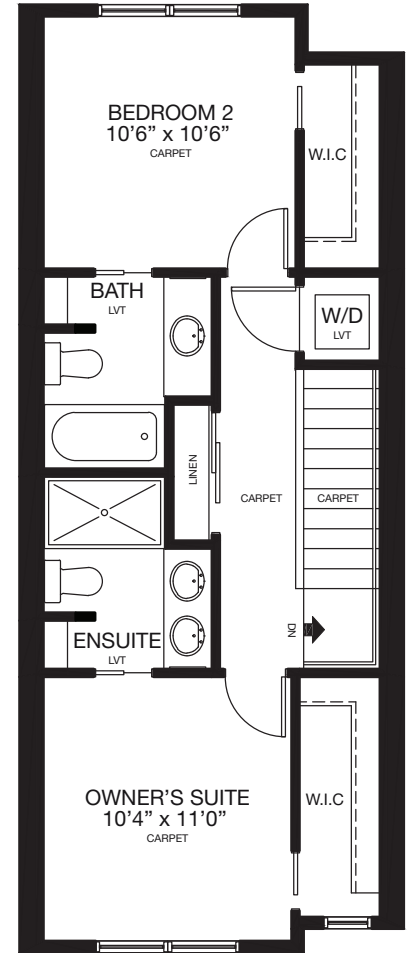
**ENTRY**  
38 SQ.FT.



**MAIN**  
559 SQ.FT.



**UPPER**  
582 SQ.FT.



Renderings are artist's conceptions only and may vary by community and lot selection. Prices, floorplans, specifications and dimensions are approximate and are subject to change without notice. E.&OE. © All rights reserved, including the right if reproduction in the whole or in part without the permission of Trico Homes. TC-30744 Plan updated Mar 31, 2026.



tricohomes.com