

THE BRAVO ZLL

1,600 SQ.FT.



83 Wolf Hollow Rise SE

3 Bedrooms ▲ 2½ Bathrooms



OPTIONS INCLUDED IN THIS HOME:

- South-facing backyard
- Second separate entry
- Close to parks & Bow River pathways
- Open concept main floor
- 9' Knock-down ceilings on main floor
- Quartz countertops in kitchen
- Pull-out kitchen faucet with spray
- 10' Kitchen island
- Hardwood, tile & carpet throughout
- 4-Piece owner's ensuite
- Front veranda
- 9' Foundation



Plus
RECEIVE YOUR OWN
TRICO RED CARD



& ENJOY INCREDIBLE ONGOING SAVINGS & REWARDS FROM OUR PARTNERS & RETAILERS

VISIT OUR SHOWHOME

91 & 95 Wolf Hollow Rise SE
Calgary, AB



THE RAEYA



THE ROWAN II

Showhome Hours:

MON - THURS: 2PM - 8PM

FRI: Closed

SAT - SUN: 12PM - 5PM

Contact **Clint Pilon**

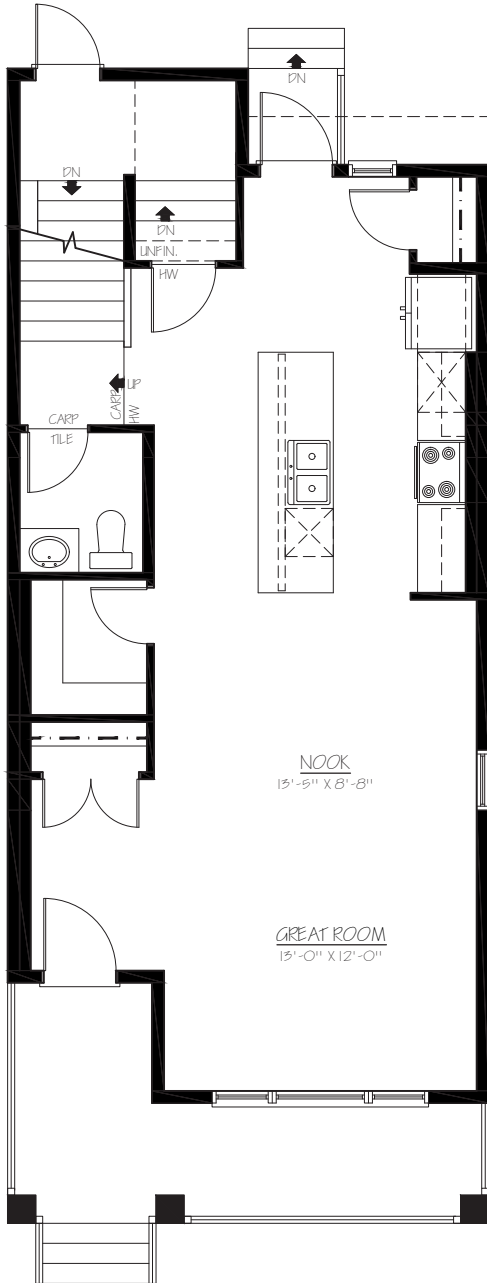
CALL: 587.351.9765 | EMAIL: clintpilon@tricohomes.com



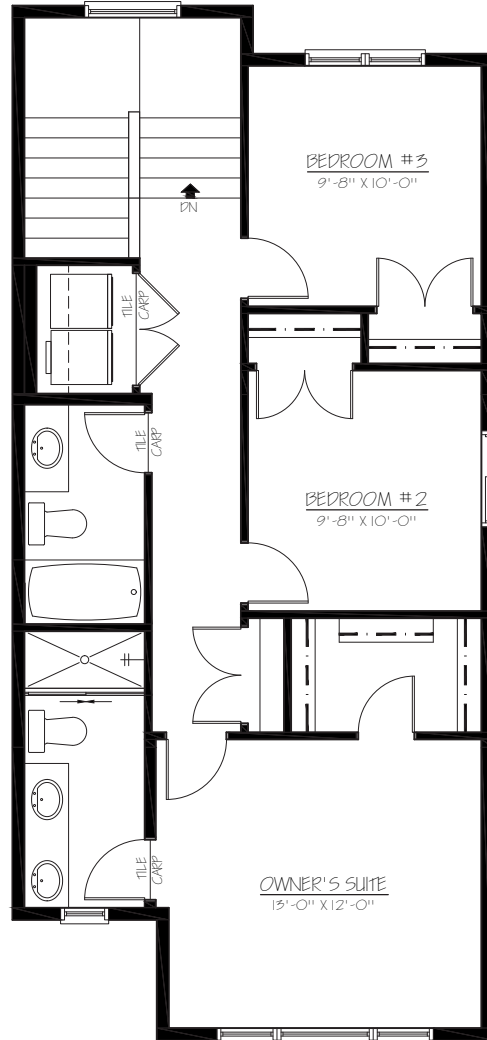
Trico Homes™

tricohomes.com

MAIN
790 SQ.FT.



UPPER
810 SQ.FT.



Renderings are artist's conceptions only and may vary by community and lot selection. Prices, floorplans, specifications and dimensions are approximate and are subject to change without notice, E.&.OE. © All rights reserved, including the right if reproduction in the whole or in part without the permission of Trico Homes. Plan updated May 28, 2026.



tricohomes.com