

THE REGENT

1,344 SQ.FT.

Chelsea Court
TOWNHOMES

84, 285 Chelsea Court

2 Bedrooms ▲ 3 Bathrooms ▲ Single Garage

OPTIONS INCLUDED IN THIS HOME:

- Minutes away from local amenities, including eco-park, green spaces, schools, plaza & East Hills Shopping Centre
- Homesite facing main road
- Moonlight standard colour palette
- Entry level flex room & full bathroom
- L-shaped kitchen with added peninsula
- 9' Knock-down ceilings on entry & main floor
- Open concept main floor
- Upgraded semi-built-in kitchen with appliances
- Zebra blinds
- Dual bedrooms with separate ensuites & walk-in closets
- 4-Piece owner's ensuite
- A/C rough-ins & gas line to deck

VISIT OUR SHOWHOMES

84 - 285 Chelsea Court
Chestermere, AB



THE MONARCH & THE REGENT

Contact **Marvin Ray Uy** today

CALL: 852.540.0437 | EMAIL: marvinrayuy@tricohomes.com

IMMEDIATE POSSESSION



SHOWHOME
LEASEBACK



Plus
RECEIVE YOUR OWN
TRICO RED CARD



& ENJOY INCREDIBLE ONGOING SAVINGS & REWARDS FROM OUR PARTNERS & RETAILERS

Showhome Hours:

MON - THURS: 2PM - 8PM

FRI: Closed

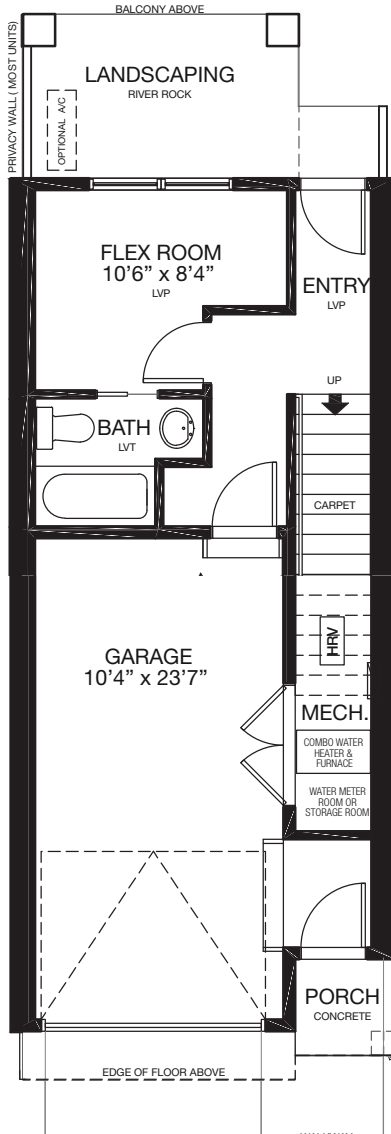
SAT - SUN: 12PM - 5PM



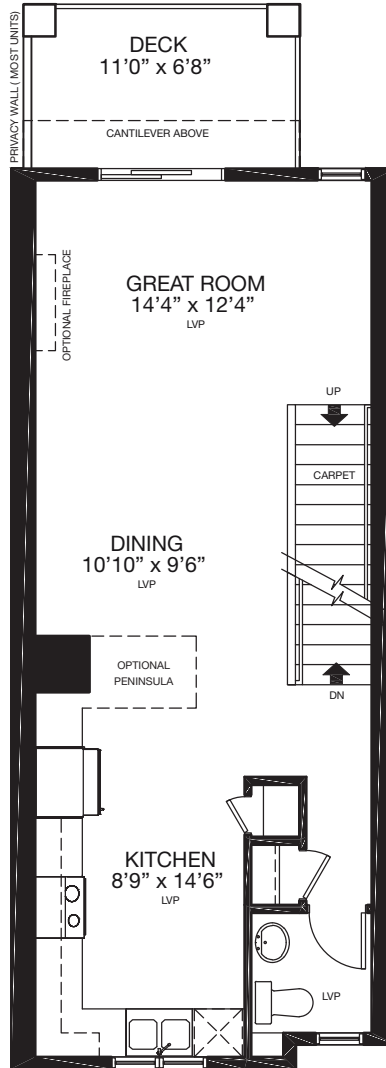
Trico Homes™

tricohomes.com

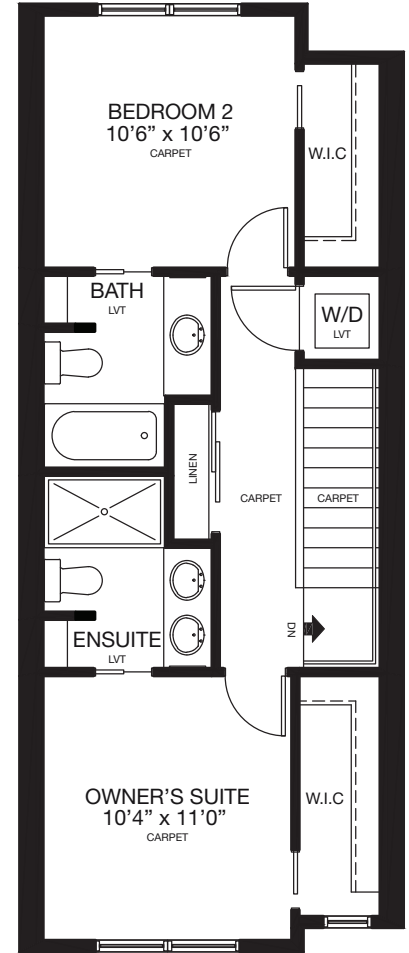
ENTRY
203 SQ.FT.



MAIN
559 SQ.FT.



UPPER
582 SQ.FT.



Renderings are artist's conceptions only and may vary by community and lot selection. Prices, floorplans, specifications and dimensions are approximate and are subject to change without notice. E.&OE. © All rights reserved, including the right if reproduction in the whole or in part without the permission of Trico Homes. TC-30744 Plan updated May 27, 2026.



trichomes.com