

# THE MONARCH

1,374 SQ.FT.

Chelsea Court  
TOWNHOMES

86, 285 Chelsea Court

3 Bedrooms ▲ 3 Bathrooms ▲ Garage



## OPTIONS INCLUDED IN THIS HOME:

- Minutes away from local amenities, including eco-park, green spaces, schools, plaza & East Hills Shopping Centre
- Hardie Board siding exterior standing shower
- Driftwood standard colour palette with upgraded quartz countertops
- Entry level flex room & full bathroom
- L-shaped kitchen with optional peninsula for added seating & storage
- Open concept main floor
- Upgraded semi-built-in kitchen appliances
- Zebra blinds
- 4-Piece owner's ensuite
- A/C rough-ins
- EV rough-ins



*Plus*  
RECEIVE YOUR OWN  
**TRICO RED CARD**



& ENJOY INCREDIBLE ONGOING SAVINGS & REWARDS FROM OUR PARTNERS & RETAILERS

## VISIT OUR SHOWHOMES

84 & 116 - 285 Chelsea Court  
Chestermere, AB



THE MONARCH & THE REGENT

### Showhome Hours:

MON - THURS: 2PM - 8PM  
FRI: Closed  
SAT - SUN: 12PM - 5PM

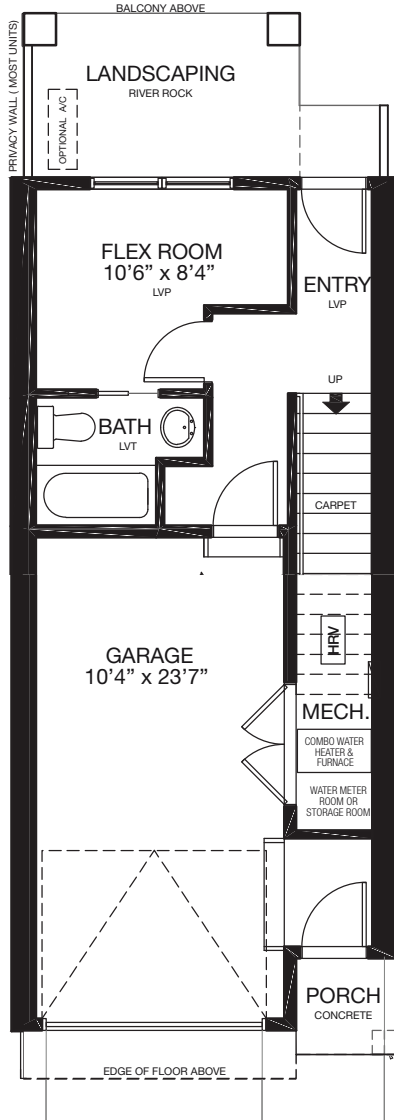
Contact **May Vallo** or **Sam Bibanco** today

CALL: 852.540.0437 | EMAIL: mayvallo@tricohomes.com

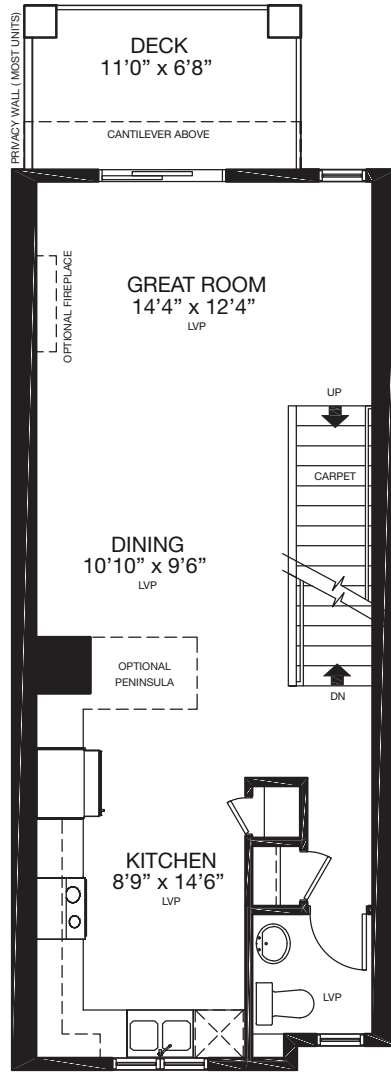


Trico Homes™  
tricohomes.com

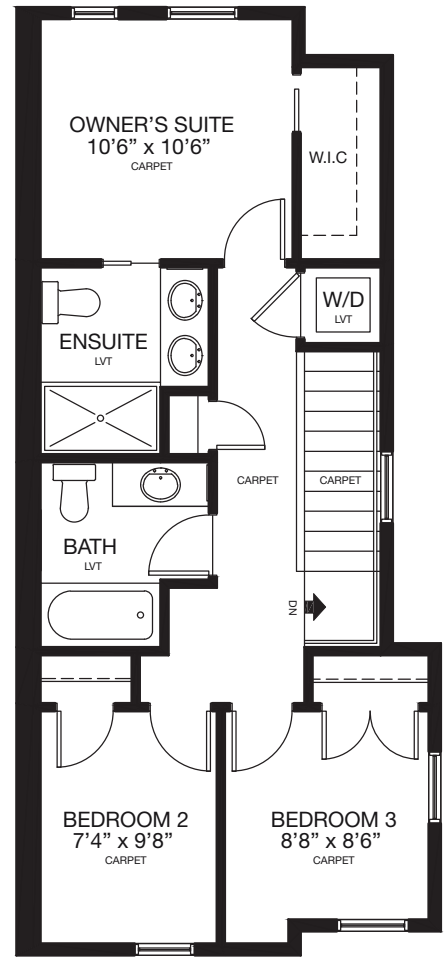
**ENTRY**  
160 SQ.FT.



**MAIN**  
559 SQ.FT.



**UPPER**  
582 SQ.FT.



Renderings are artist's conceptions only and may vary by community and lot selection. Prices, floorplans, specifications and dimensions are approximate and are subject to change without notice. E.&OE. © All rights reserved, including the right if reproduction in the whole or in part without the permission of Trico Homes. TC-30744 Plan updated Mar 31, 2026.



tricohomes.com