
 3 Bedrooms

 2½ Bathrooms

 Double Garage

# THE OXFORD II ZLL

2094 SQ.FT.

23 BELMONT PLACE SW

**BELMONT**

COME VISIT OUR SHOWHOMES

23 Belmont Place SW

Call Will Jorgenson at 403.764.0301  
or email [belmont@tricohomes.com](mailto:belmont@tricohomes.com)

SHOWHOME HOURS:

Mon - Thurs: 2pm - 8pm

Fri: Closed

Sat - Sun: 12pm - 5pm

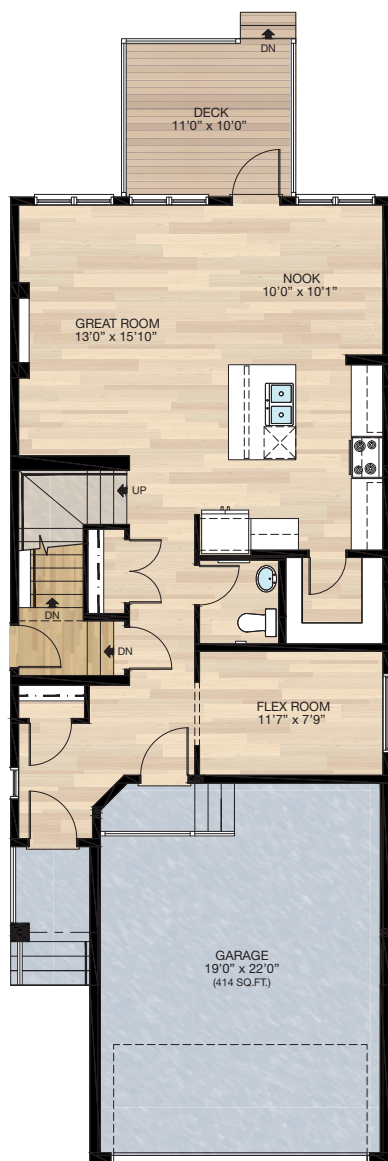


Trico Homes™

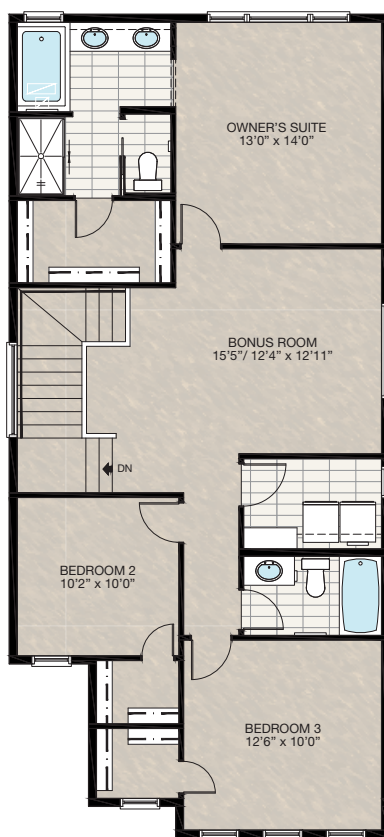
The Heart of Homebuilding®

# SHOWHOME PLAN

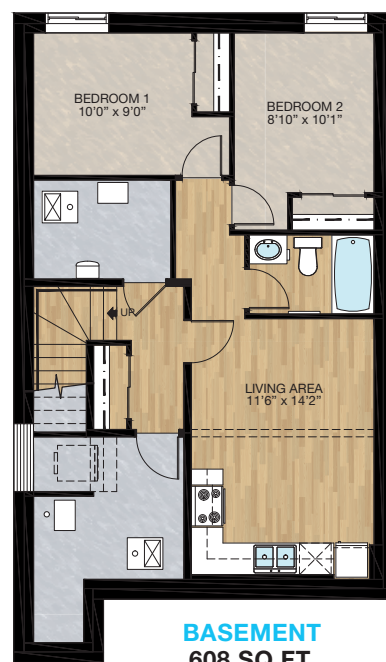
THE  
OXFORD II  
ZLL  
2094 SQ.FT.



**MAIN**  
912 SQ.FT.



**UPPER**  
1182 SQ.FT.



**BASEMENT**  
608 SQ.FT.



Renderings are artist's conceptions only and may vary by community and lot selection. Prices, floorplans, specifications and dimensions are approximate and are subject to change without notice. E.&O.E. © All rights reserved, including the right of reproduction in the whole or in part without the permission of Trico Homes.

Plan updated as of June 10, 2025.



HARDWOOD	DECK	CARPET	CONCRETE	TILE	LVP
----------	------	--------	----------	------	-----

tricohomes.com