



← 32' →

Min. Lot Width

 3 Bedroom

 2½ Bathrooms

 Double Garage

THE HARRINGTON

2111 SQ.FT.

☐ Elements Specification

☐ Elite Specification

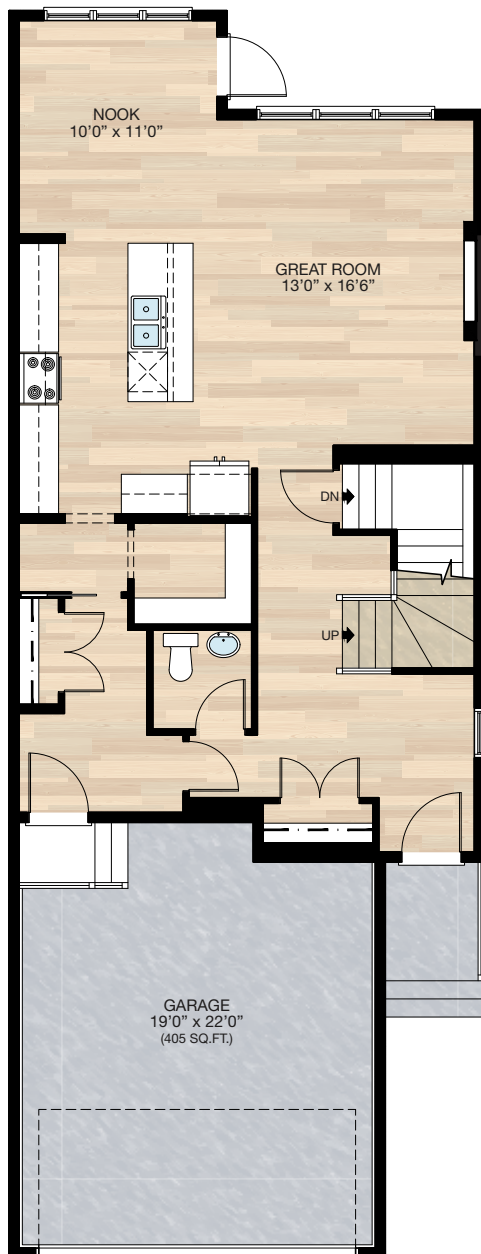


Trico Homes™

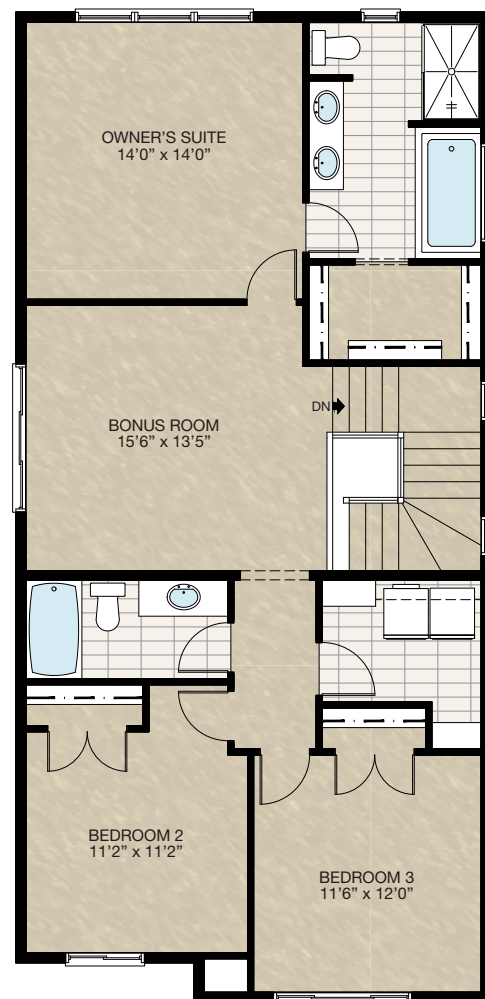
The Heart of Homebuilding®

STANDARD PLAN

THE
HARRINGTON
2111 SQ.FT.



MAIN
942 SQ.FT.



UPPER
1169 SQ.FT.

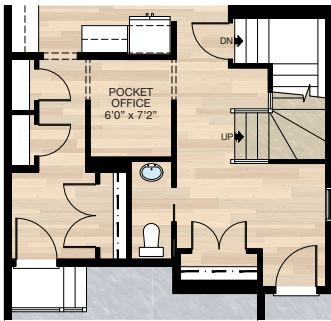


FEATURED OPTIONS

← 32' →
Min. Lot Width

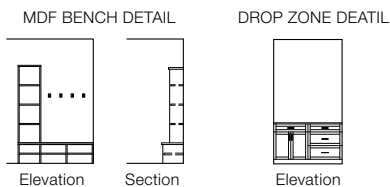
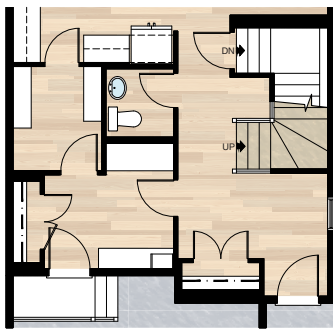
SELECT-1 POCKET OFFICE OPTION

- Redesign pantry, mudroom & half bath to create pocket office
- Add pantry closet & broom closet



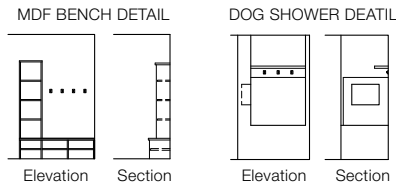
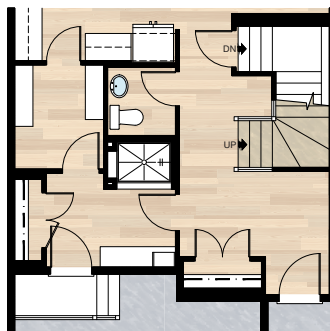
SELECT-2 MUDROOM OPTION 1

- Redesign pantry, mudroom & half bath
- Add drop zone & MDF bench



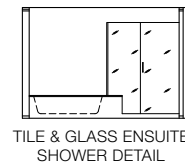
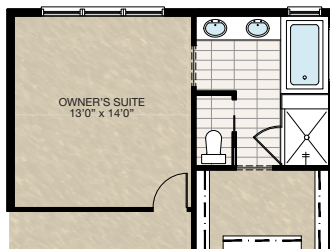
SELECT-3 MUDROOM OPTION 2

- Redesign pantry, mudroom & half bath
- Add MDF bench
- Add dog shower



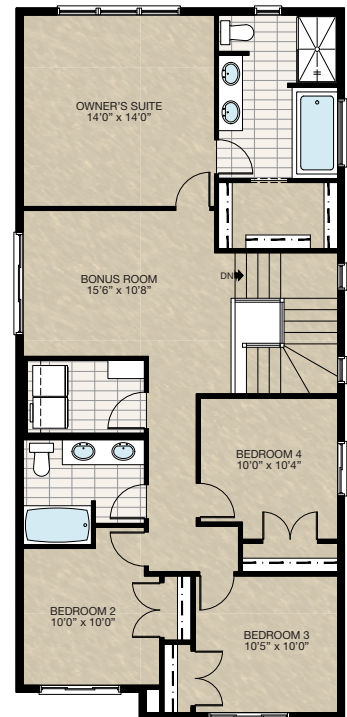
SELECT-4 ENSUITE OPTION

- Delete 36" x 60" fiberglass shower
- Delete 72" x 32" soaker tub
- Includes 10 mm glass & tile shower
- Includes 60" x 32" soaker tub
- Add 30" x 40" frosted window & 48" x 40" frosted window
- Delete 60" x 40" frosted window & 24" x 40" frosted window
- Increase vanity to 6'2½"
- Includes pocket door to water closet



SELECT-5 4 BEDROOM & BONUS ROOM OPTION

- Extend front 2' which adds 48 sq.ft.
- Redesign upper floor adding a fourth bedroom



HARDWOOD

DECK

CARPET

CONCRETE

TILE

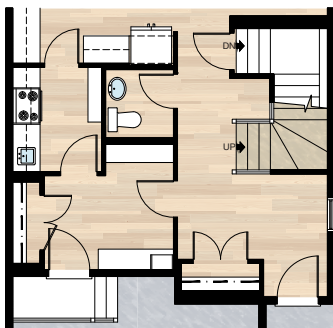
LVP

FEATURED HARRINGTON OPTIONS

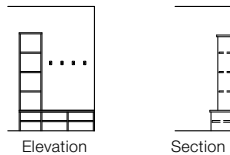
THE
HARRINGTON
2111 SQ.FT.

SELECT-11 SPICE KITCHEN & MUDROOM OPTION

- Redesign pantry, mudroom & half bath
- Add wire shelving & MDF bench to mudroom
- Add stove, sink, cabinetry & wire shelving to spice kitchen

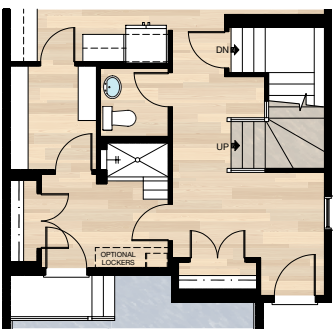


MDF BENCH DETAIL

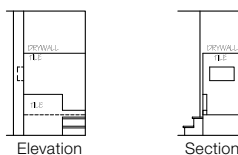


SELECT-13A DOG SHOWER WITH TILE STUB WALL

- Redesign pantry, mudroom & half bath
- Add dog shower

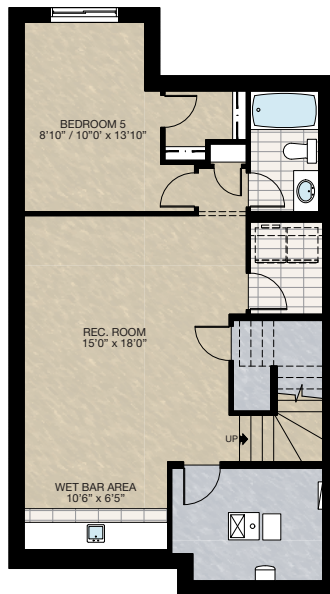


DOG SHOWER DETAIL



SELECT-12 BASEMENT DEVELOPMENT OPTION

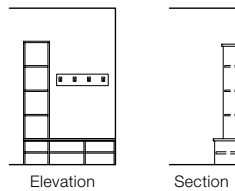
- 683 Sq.Ft. developed area
- Add extra riser to stairwell for 9'0" basement ceiling with 8'9" headroom clearance
- Include finished basement stairwell
- Delete 2'8" door top of stairwell
- Include laundry room with washer & dryer rough-in only & 12" wire shelf above
- Add 10'6" wet bar with lower cabinetry & laminate countertop & bar sink with one row of 12" tile flooring



SELECT-13C MDF LOCKERS OPTION

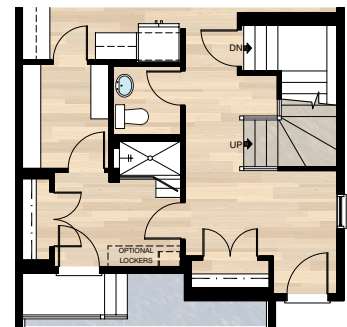
Must be combined with **SELECT-13A** or **13B**

MDF LOCKERS DETAIL

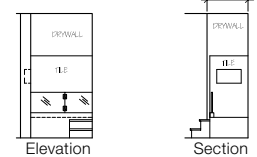


SELECT-13B DOG SHOWER WITH GLASS DOOR

- Redesign pantry, mudroom & half bath
- Add dog shower

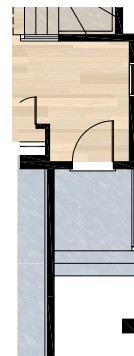


DOG SHOWER DETAIL



SELECT-14 WIDE FRONT ENTRY + PORCH OPTION

- Additional 10 Sq.Ft. to main floor (extend front entry 1'0" x 9'10" and foundation below)
- Extend front porch width by 1'0" (this is designed for 34' lot widths or wider)



HARDWOOD

DECK

CARPET

CONCRETE

TILE

LVP

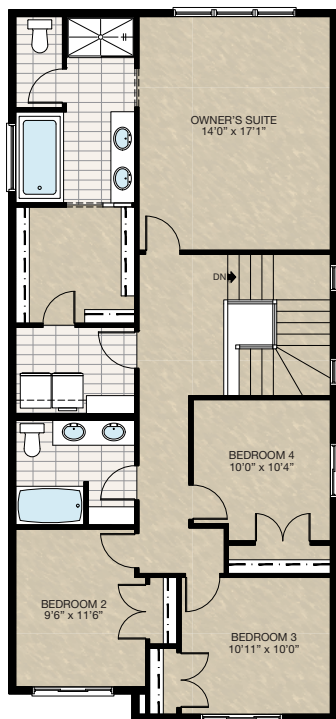
tricohomes.com

FEATURED OPTIONS

THE
HARRINGTON
2111 SQ.FT.

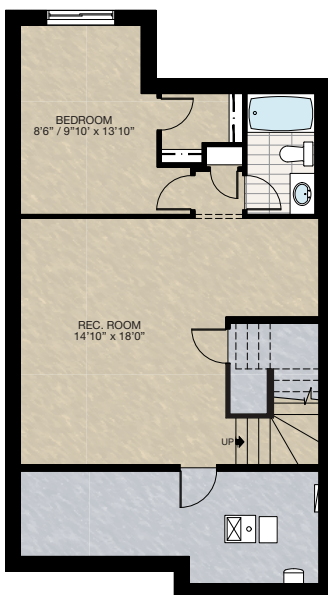
SELECT-6 4 BEDROOM OPTION

- Extend front 2' which adds 48 sq.ft.
- Redesign upper floor adding a fourth bedroom & deleting bonus room



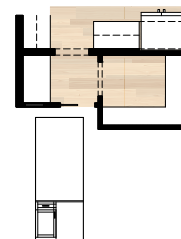
SELECT-7 BASEMENT DEVELOPMENT OPTION

- 610 Sq.Ft. developed area
- Add extra riser to stairwell for 9'0" basement ceiling with 8'9" headroom clearance
- Include finished basement stairwell
- Delete 2'8" door top of stairwell



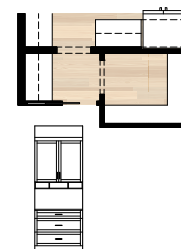
SELECT-9 BEVERAGE CENTRE IN FLEX SPACE OPTION

- Add lower cabinet



SELECT-10 DROP ZONE IN FLEX SPACE OPTION

- Add drop zone cabinets



Trico Homes is a local home builder, with new single and multi-family homes for sale in Calgary, Okotoks, Chestermere, Cochrane, Airdrie and DeWinton. Offering a great selection of starter, move-up, semi-estate and ultra-estate models in numerous communities, you'll find the house that's just right for you! Look for this model and many others in Ambleton, Belmont, Brawn Landing, Carrington, Chelsea, Chelsea Court Townhomes, Colours of Seton Townhomes, Cornerbrook, D'Arcy, Creek View, Dawson's Landing, Glacier Ridge, Hamilton Heights, Harmony, Homestead, Huxley, Legacy, Midtown, Pine Creek, Precedence, Rivercrest, Seton, Sirocco, Southbow Landing, Verona West Townhomes, West Springs, West83 Townhomes and Wolf Willow.



Renderings are artist's conceptions only and may vary by community and lot selection. Prices, floorplans, specifications and dimensions are approximate and are subject to change without notice. E.&O.E. © All rights reserved, including the right of reproduction in the whole or in part without the permission of Trico Homes.

Plan updated as of March 20, 2024.



tricohomes.com