


 3 Bedrooms

 2.5 Bathrooms

THE CAMBRIDGE 28

2483 SQ.FT.

408 CHELSEA PORT CROSSING

CHELSEA
CHESTERMERE

COME VISIT OUR SHOWHOME

408 Chelsea Port Crossing, Chestermere, AB
Call Kaylee Pilon today at 587.496.8192
or email at chelsealaned@tricohomes.com

SHOWHOME HOURS:

Mon - Thurs: 2pm - 8pm

Fri: Closed

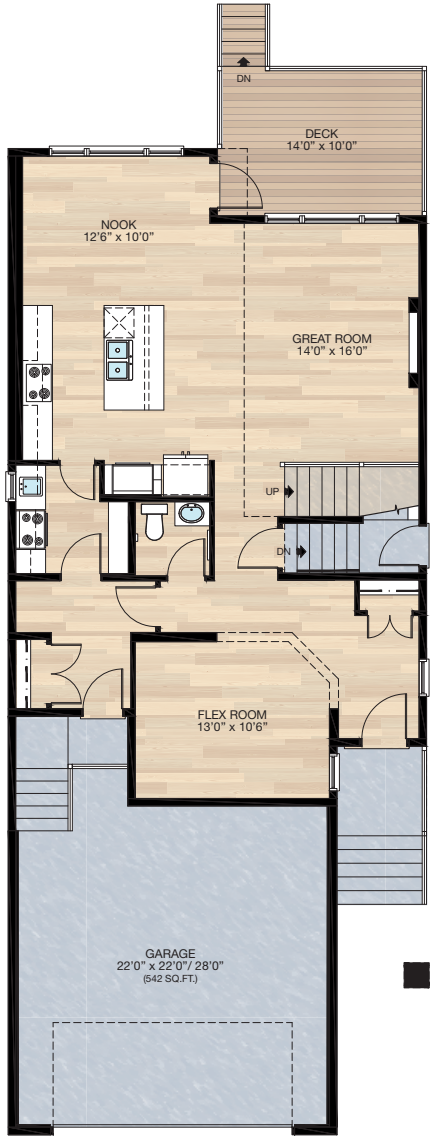
Sat - Sun: 12pm - 5pm



Trico Homes™
The Heart of Homebuilding®

SHOWHOME PLAN

THE
CAMBRIDGE 28
2483 SQ.FT.



MAIN
1097 SQ.FT.



UPPER
1386 SQ.FT.



Renderings are artist's conceptions only and may vary by community and lot selection. Prices, floorplans, specifications and dimensions are approximate and are subject to change without notice. E.&O.E. © All rights reserved, including the right if reproduction in the whole or in part without the permission of Trico Homes.

Plan updated as of August 12, 2025.



HARDWOOD	DECK	CARPET	CONCRETE	TILE	LVP
----------	------	--------	----------	------	-----

tricohomes.com