




-  3 Bedrooms
-  2½ Bathrooms
-  Double Garage

THE OXFORD II ZLL

2067 SQ.FT.

181 MITCHELL ROAD NW



GLACIER RIDGE

COME VISIT OUR SHOWHOMES

177 & 181 Mitchell Road NW, Calgary, AB
Call Justin Rampersad today at 403.585.1616
or email at glacierridge@tricohomes.com

SHOWHOME HOURS:

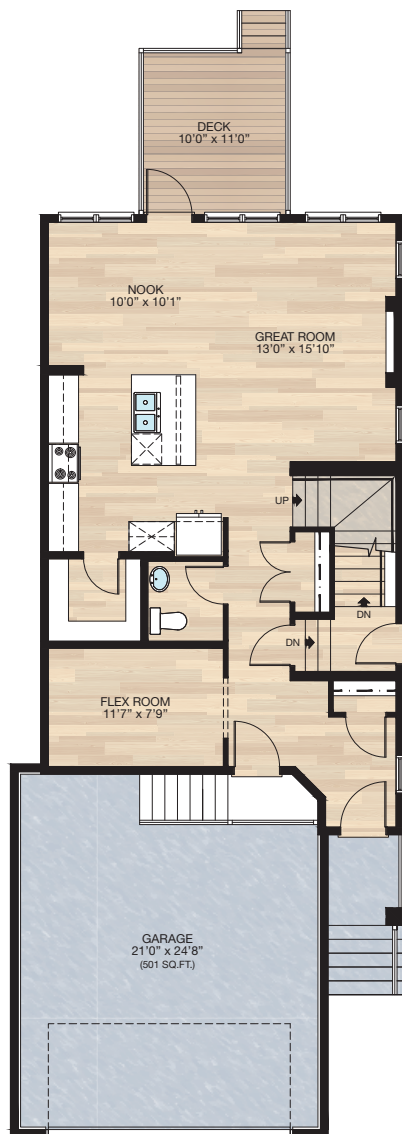
Mon - Thurs: 2pm - 8pm
Fri: Closed
Sat - Sun: 12pm - 5pm



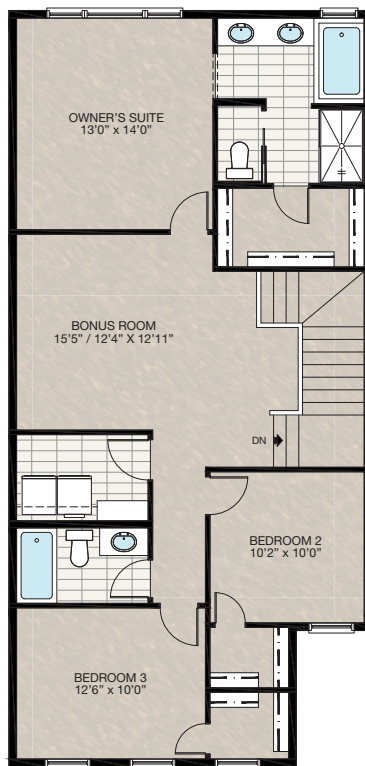
Trico Homes™
The Heart of Homebuilding®

SHOWHOME PLAN

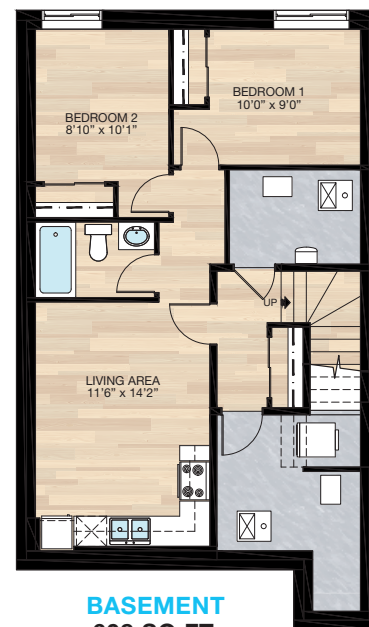
THE
OXFORD II
2067 SQ.FT.



MAIN
912 SQ.FT.



UPPER
1155 SQ.FT.



BASEMENT
608 SQ.FT.



Renderings are artist's conceptions only and may vary by community and lot selection. Prices, floorplans, specifications and dimensions are approximate and are subject to change without notice. E.&O.E. © All rights reserved, including the right if reproduction in the whole or in part without the permission of Trico Homes.

Plan updated as of August 29, 2024.



HARDWOOD	DECK	CARPET	CONCRETE	TILE	LVP
----------	------	--------	----------	------	-----

tricohomes.com