

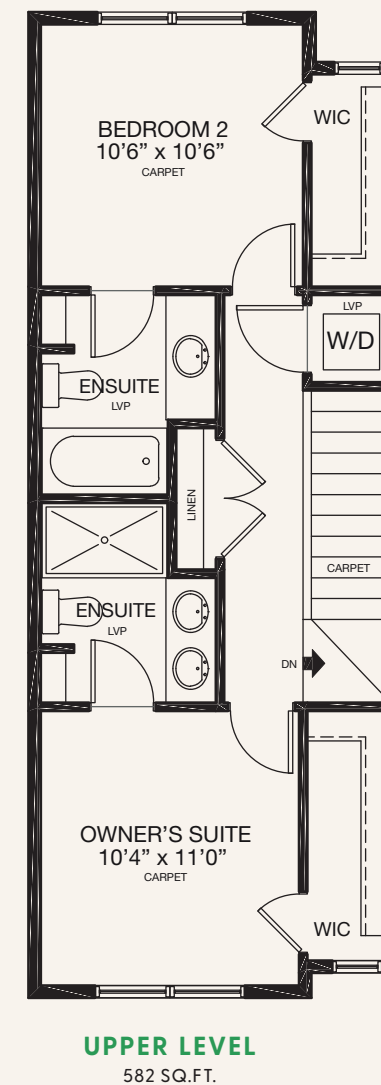
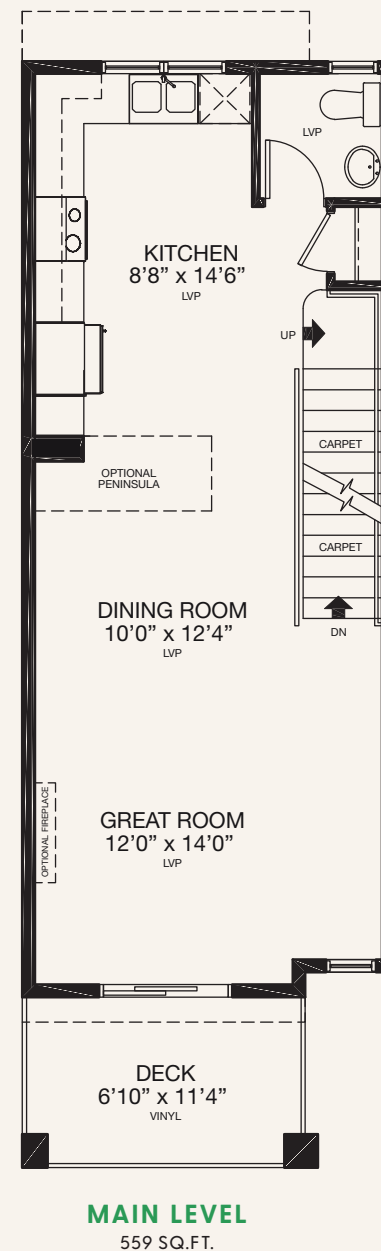
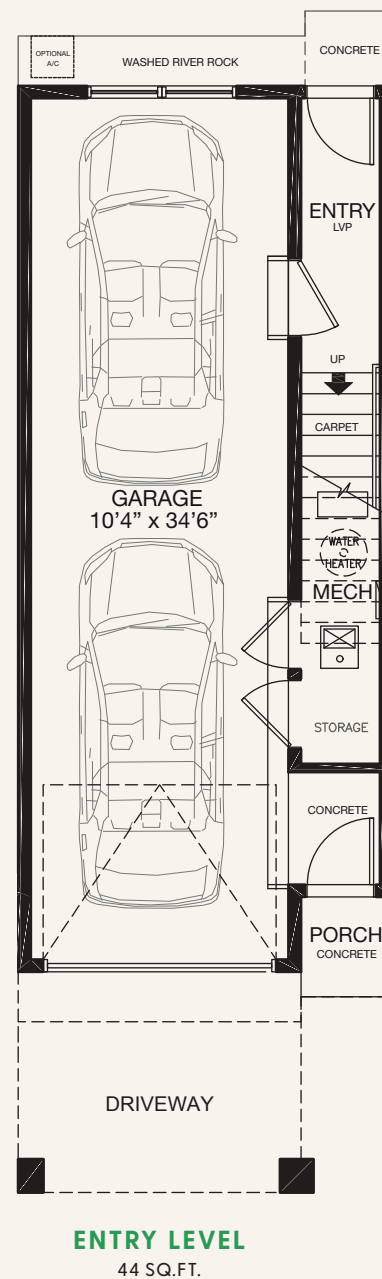
## TOWNHOMES

Type A2 | 1185 Sq.Ft | 15' wide

## 2 Bedrooms

## 2.5 Baths

## Tandem Garage

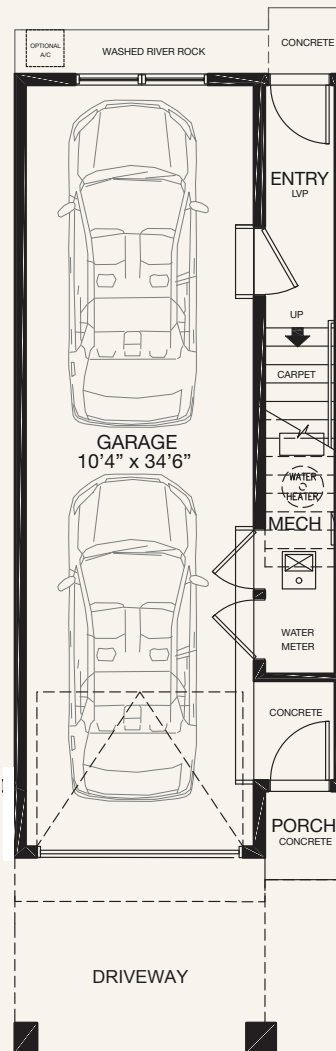


\* Floorplan is an artist rendering only and may be subject to change without notice. Builder reserves the right to make modifications and changes to building design, specifications, features and floorplans without notice. Measurements and areas shown are based on pre-construction estimates and are approximate only. E.&O.E. Windows locations and sizes on these renderings are dependent on building location and elevation as approved by the City of Calgary, confirm with your sales representative exact locations. UPDATED JULY 2, 2024

247 & 249 Seton Grove SE, Calgary AB | 825.540.1509 | [coloursofseton@tricohomes.com](mailto:coloursofseton@tricohomes.com) | [coloursofseton.com](https://coloursofseton.com)



# AVAILABLE OPTIONS



OPTIONAL A/C

WASHED RIVER ROCK

FLEX ROOM  
9'6" x 12'0"  
LVP

ENTRY  
LVP

UP

CARPET

MECH

STORAGE

CONCRETE

PORCH  
CONCRETE

DRIVEWAY

GARAGE  
10'4" x 23'9"

WASHED RIVER ROCK

OPTIONAL A/C

OPTIONAL BENCH

CONCRETE

FLEX ROOM  
14'0" x 12'0"  
LVP

ENTRY  
LVP

OPTIONAL CLOSET

GARAGE  
10'4" x 23'9"

CARPET

MECH

STORAGE

CONCRETE

PORCH  
CONCRETE

DRIVEWAY

OPTIONAL A/C

WASHED RIVER ROCK

CONCRETE

FLEX ROOM  
10'6" x 8'4"  
LVP

ENTRY  
LVP

UP  
CARPET

Mech.

GARAGE  
10'4" x 20'0"

DRIVEWAY

**ENTRY LEVEL FLEX  
ROOM OPTION 3**  
212 SQ.FT.

\* Floorplan is an artist rendering only and may be subject to change without notice. Builder reserves the right to make modifications and changes to building design, specifications, features and floorplans without notice. Measurements and areas shown are based on pre-construction estimates and are approximate only. E.&O.E. Windows locations and sizes on these renderings are dependent on building location and elevation as approved by the City of Calgary, confirm with your sales representative exact locations. UPDATED JULY 2, 2024



Trico  
Homes