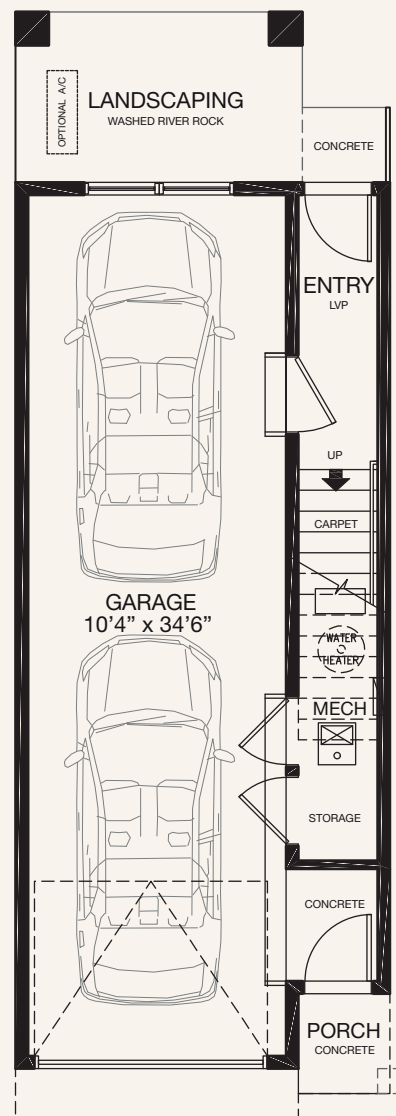


TOWNHOMES

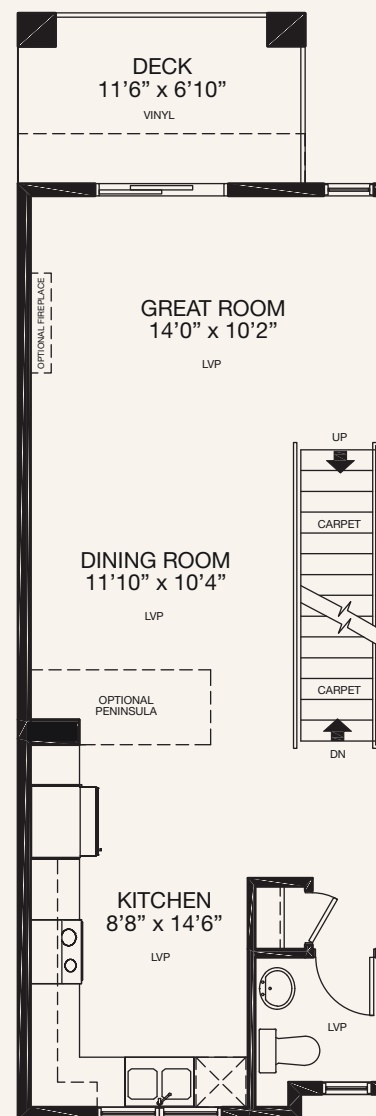
Type A | 1185 Sq.Ft | 15' wide

2.5 Baths

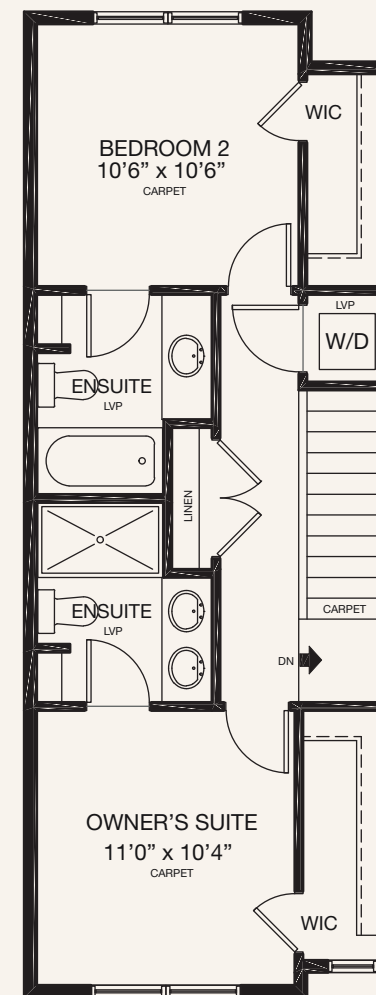
Tandem Garage



ENTRY LEVEL
44 SQ.FT.



MAIN LEVEL
559 SQ.FT.



UPPER LEVEL
582 SQ.FT.

* Floorplan is an artist rendering only and may be subject to change without notice. Builder reserves the right to make modifications and changes to building design, specifications, features and floorplans without notice. Measurements and areas shown are based on pre-construction estimates and are approximate only. E.&O.E. Windows locations and sizes on these renderings are dependent on building location and elevation as approved by the City of Calgary, confirm with your sales representative exact locations. UPDATED JULY 2, 2024

247 & 249 Seton Grove SE, Calgary AB | 825.540.1509 | coloursofseton@tricohomes.com | coloursofseton.com



colours

of

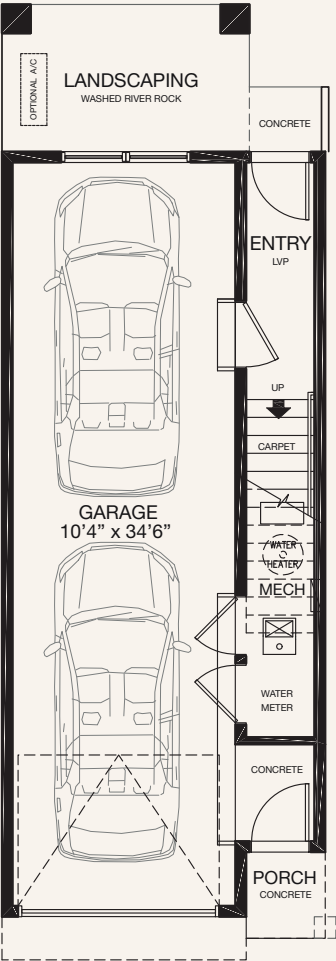
seton

TOWNHOMES

Sage

AVAILABLE

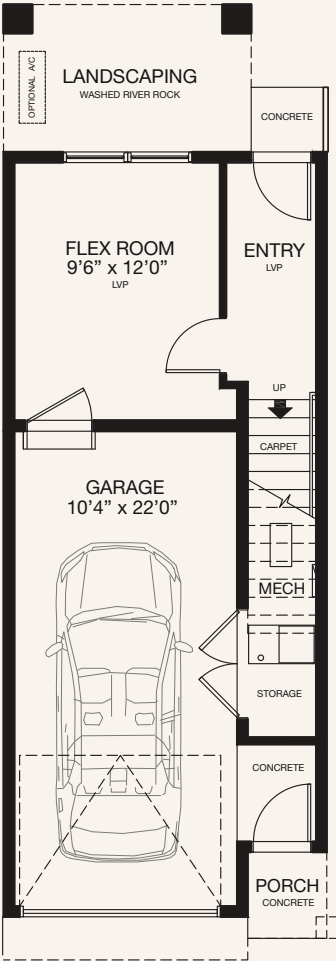
OPTIONS



ENTRY LEVEL

WITH WATER METER

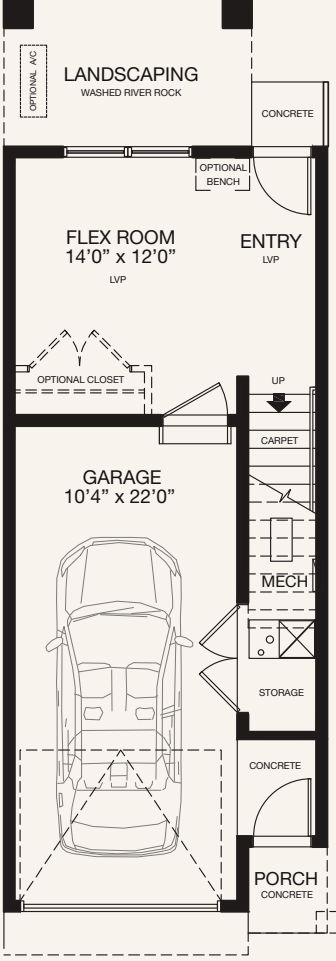
44 SQ.FT.



ENTRY LEVEL

FLEX ROOM OPTION 1

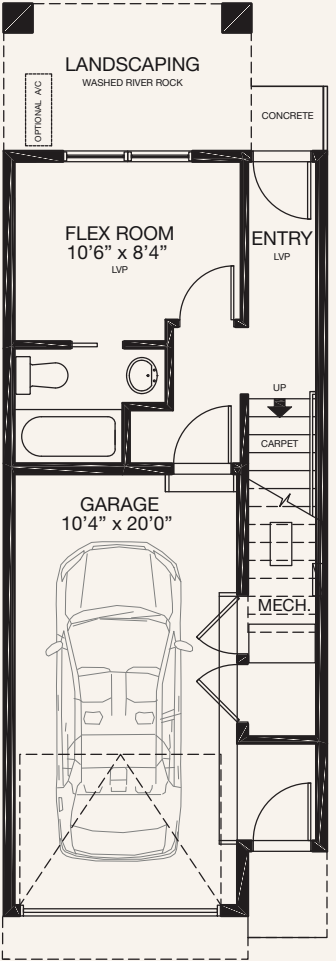
189 SQ.FT.



ENTRY LEVEL

FLEX ROOM OPTION 2

189 SQ.FT.



ENTRY LEVEL

FLEX ROOM OPTION 3

212 SQ.FT.

* Floorplan is an artist rendering only and may be subject to change without notice. Builder reserves the right to make modifications and changes to building design, specifications, features and floorplans without notice. Measurements and areas shown are based on pre-construction estimates and are approximate only. E.&O.E. Windows locations and sizes on these renderings are dependent on building location and elevation as approved by the City of Calgary, confirm with your sales representative exact locations. UPDATED JULY 2, 2024