

THE LAWSON ZLL

2,538 SQ.FT.



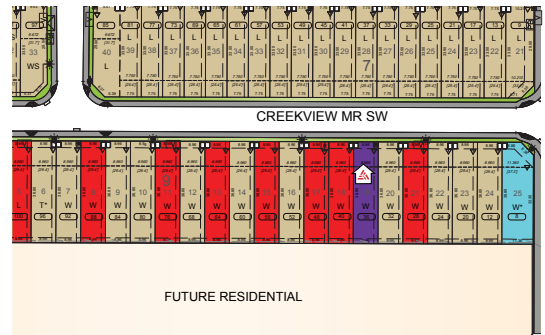
36 Creekview Manor SW

5 Bedrooms ▲ 4 Bathrooms ▲ Double Garage



OPTIONS INCLUDED IN THIS HOME

- Walk-out homesite with a south facing backyard
- Main floor bedroom & full bathroom with tiled standing shower
- Main floor flex room with french doors
- Spice kitchen with gas range
- Full height cabinetry in main kitchen
- Chimney hood fans in main kitchen & spice kitchen
- Built-in appliances in main kitchen
- Quartz countertops in kitchen
- Electric fireplace in great room
- Central bonus room on upper floor
- Pot lights added to great room & bonus room
- 5-Piece owner's ensuite with glass & tile shower
- 17'x10' Rear deck with gas line
- 9' Foundation



Plus
RECEIVE YOUR OWN
TRICO RED CARD



AND ENJOY INCREDIBLE ONGOING SAVINGS AND REWARDS FROM OUR PARTNERS AND RETAILERS

VISIT OUR SHOWHOME

8 Creekview Manor SW
Calgary AB

Contact Isabel Rodriquez
CALL: 403.453.3023
EMAIL: isabelrodriguez@tricohomes.com



SHOWHOME THE LAWSON

Showhome hours:
MON - THURS: 2 - 8PM
FRI: Closed
SAT - SUN: 12 - 5PM



tricohomes.com

BUILDING IN 31 COMMUNITIES:
FRONT-GARAGE HOMES | LANED HOMES | DUPLEXES | TOWNHOMES | CONDOS

THE LAWSON ZLL

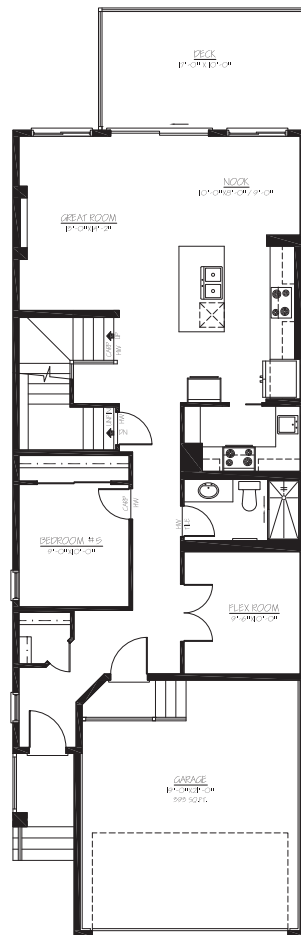
2,538 SQ.FT.



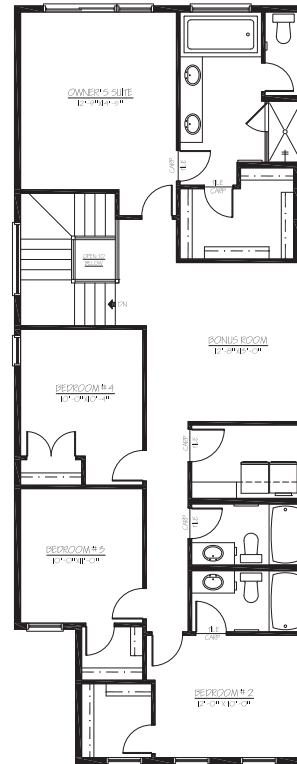
36 Creekview Manor SW

5 Bedrooms ▲ 4 Bathrooms ▲ Double Garage

SUMMER POSSESSION



MAIN
1116 SQ.FT



UPPER
1422 SQ.FT



Platinum member
2004 - 2025

Top-rated
Homebuilder



4.4 ★★★★★



tricohomes.com

Renderings are artist's conceptions only and vary by community and lot selection. Prices, floorplans, specifications and dimensions are approximate and are subject to change without notice. E.&OE. © All rights reserved, including the right if reproduction in the whole or in part without the permission of Trico Homes. Plan updated January 29, 2026

BUILDING IN 31 COMMUNITIES:
FRONT-GARAGE HOMES | LANED HOMES | DUPLEXES | TOWNHOMES | CONDOS