

THE REGENT

1,179 SQ.FT.

**Chelsea
Court**
TOWNHOMES

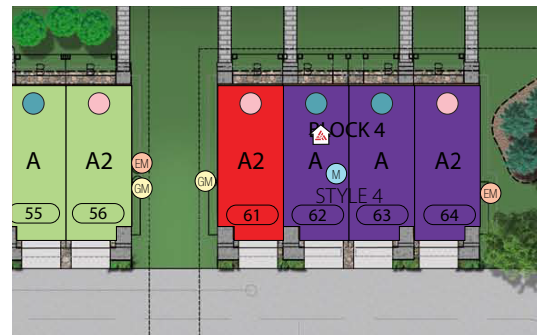
62 - 285 Chelsea Court

3 Bedrooms ▲ 2½ Bathrooms ▲ Tandem Garage



OPTIONS INCLUDED IN THIS HOME

- Minutes away from local amenities, including eco-park, green spaces, schools, plaza & East Hills Shopping Centre
- Hardie Board siding exterior
- Homesite facing main road
- 3 Bedrooms on upper level
- Upgraded semi built-in kitchen
- Quartz countertops
- 9' Knock-down ceilings on entry & main level
- Open concept main floor
- Stainless steel appliances in kitchen
- Zebra blinds
- 11' Wide deck and gas line on main level
- 4-Piece owner's ensuite
- A/C rough-ins



Plus
RECEIVE YOUR OWN
TRICO RED CARD



AND ENJOY INCREDIBLE ONGOING SAVINGS AND
REWARDS FROM OUR PARTNERS AND RETAILERS

VISIT OUR SHOWHOME

84 - 285 Chelsea Court
Chestermere AB



SHOWHOME THE REGENT

Showhome hours:
MON - THURS: 2 - 8PM
FRI: Closed
SAT - SUN: 12 - 5PM



tricohomes.com

Contact May Vallo & Sam Bibanco
CALL: 825.540.0437
EMAIL: mayvallo@tricohomes.com
EMAIL: sambibanco@tricohomes.com

BUILDING IN 31 COMMUNITIES:
FRONT-GARAGE HOMES | LANED HOMES | DUPLEXES | TOWNHOMES | CONDOS

THE REGENT

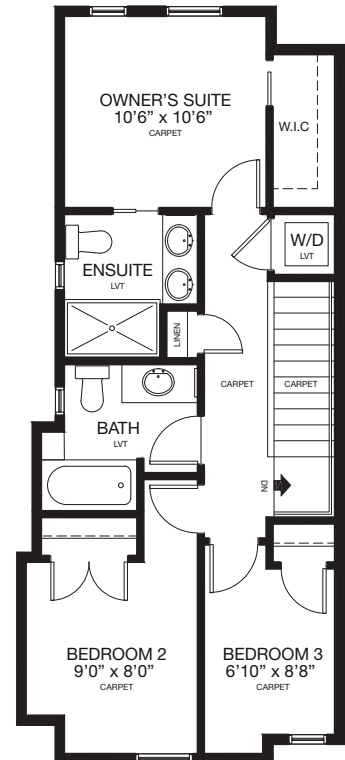
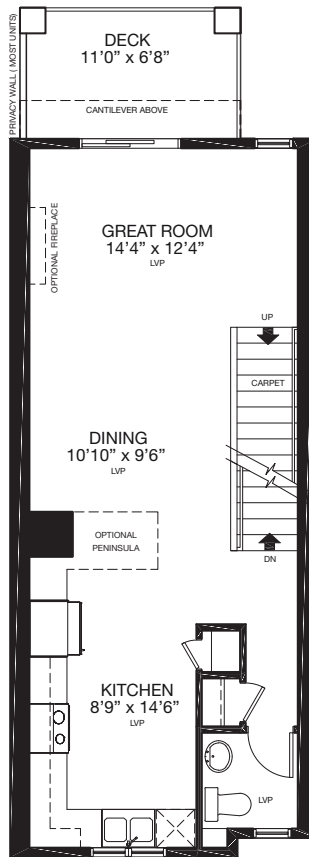
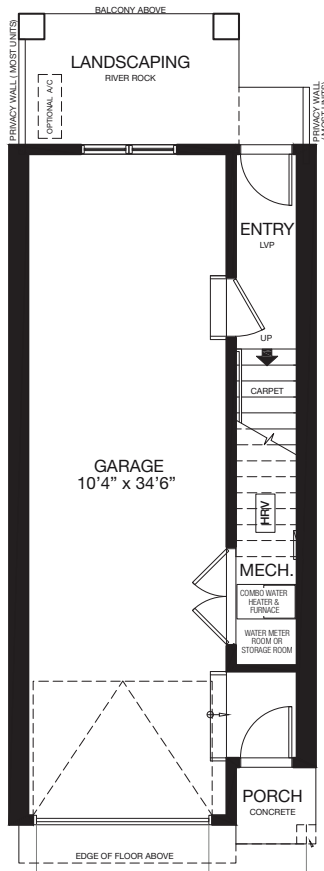
1,179 SQ.FT.

Chelsea Court
TOWNHOMES

62 - 285 Chelsea Court

3 Bedrooms ▲ 2½ Bathrooms ▲ Tandem Garage

SUMMER POSSESSION



Platinum member
2004 - 2025

Top-rated
Homebuilder



4.4 ★★★★★



Trico
Homes™

tricohomes.com

Renderings are artist's conceptions only and vary by community and lot selection. Prices, floorplans, specifications and dimensions are approximate and are subject to change without notice. E.&OE. © All rights reserved, including the right if reproduction in the whole or in part without the permission of Trico Homes. Plan updated February 4, 2026

BUILDING IN 31 COMMUNITIES:
FRONT-GARAGE HOMES | LANED HOMES | DUPLEXES | TOWNHOMES | CONDOS