

# THE MONARCH

1,209 SQ.FT.

**Chelsea Court**  
TOWNHOMES

64 - 285 Chelsea Court

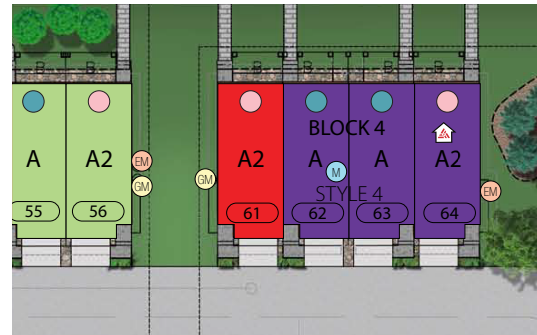
3 Bedrooms ▲ 2½ Bathrooms ▲ Tandem Garage

SUMMER POSSESSION



## OPTIONS INCLUDED IN THIS HOME

- Minutes away from local amenities, including eco-park, green spaces, schools, plaza & East Hills Shopping Centre
- Hardie Board siding exterior
- Homesite facing main road
- 3 Bedrooms on upper level
- Upgraded semi built-in kitchen with stainless steel appliances
- 9' Knock-down ceilings on entry & main level
- Open concept main floor
- Quartz countertops
- Zebra blinds
- 11' Wide deck with gas line on main level
- 4-Piece owner's ensuite
- A/C rough-ins



*Plus*  
RECEIVE YOUR OWN  
TRICO RED CARD



AND ENJOY INCREDIBLE ONGOING SAVINGS AND REWARDS FROM OUR PARTNERS AND RETAILERS

## VISIT OUR SHOWHOME

84 - 285 Chelsea Court  
Chestermere AB



SHOWHOME THE REGENT

**Showhome hours:**  
MON - THURS: 2 - 8PM  
FRI: Closed  
SAT - SUN: 12 - 5PM

**Trico Homes™**

[tricohomes.com](http://tricohomes.com)

Contact May Vallo & Sam Bibanco

CALL: 825.540.0437

EMAIL: [mayvallo@tricohomes.com](mailto:mayvallo@tricohomes.com)

EMAIL: [sambibanco@tricohomes.com](mailto:sambibanco@tricohomes.com)

**BUILDING IN 31 COMMUNITIES:**  
FRONT-GARAGE HOMES | LANED HOMES | DUPLEXES | TOWNHOMES | CONDOS

# THE MONARCH

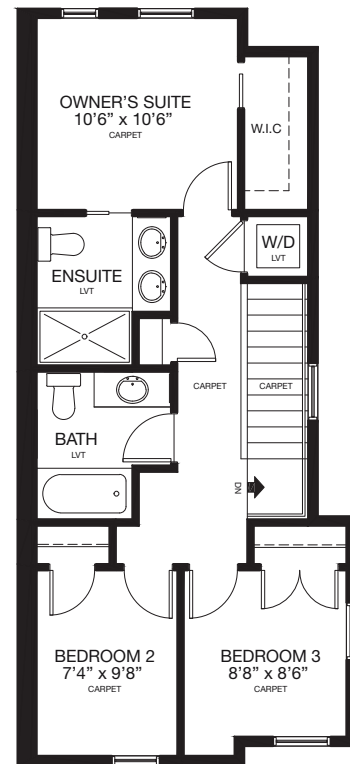
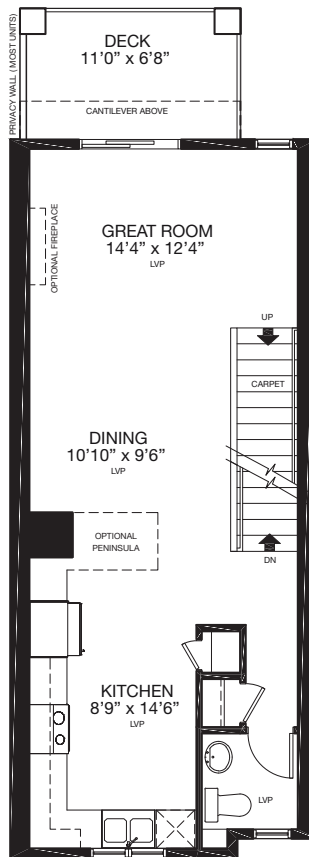
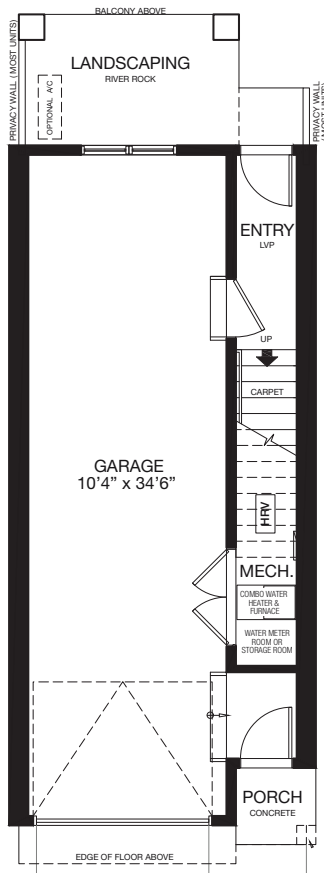
1,209 SQ.FT.

**Chelsea Court**  
TOWNHOMES

64 - 285 Chelsea Court

3 Bedrooms ▲ 2½ Bathrooms ▲ Tandem Garage

SUMMER POSSESSION



Platinum member  
2004 - 2025

Top-rated  
Homebuilder



4.4 ★★★★★



**Trico**  
Homes™

[tricohomes.com](http://tricohomes.com)

Renderings are artist's conceptions only and vary by community and lot selection. Prices, floorplans, specifications and dimensions are approximate and are subject to change without notice. E.&O.E. ® All rights reserved, including the right if reproduction in the whole or in part without the permission of Trico Homes. Plan updated February 4, 2026

**BUILDING IN 31 COMMUNITIES:**  
FRONT-GARAGE HOMES | LANED HOMES | DUPLEXES | TOWNHOMES | CONDOS