

THE SPRINGFIELD

3,265 SQ.FT.



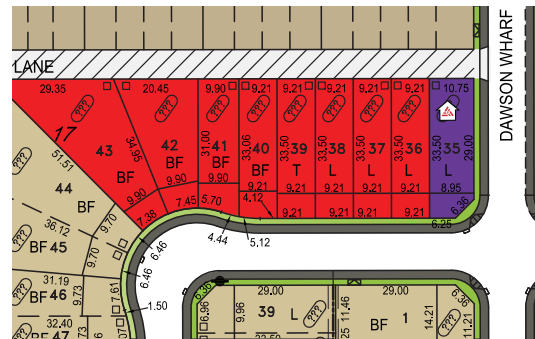
83 Dawson Wharf Mount

5 Bedrooms ▲ 4½ Bathrooms ▲ Triple Garage

OPTIONS INCLUDED IN THIS HOME

- 46' wide homesite with west-facing backyard
- Main floor bedroom & full bathroom
- Main floor flex room
- Spice kitchen
- 9' Knock-down ceilings on main floor
- Built-in appliances
- Electric fireplace in great room
- 4 Bedrooms & central bonus room on upper floor
- Dual ensuites on upper floor
- 5-Piece owner's ensuite with 10mm glass & tile shower
- Front entry extension
- 18'x10' Rear deck with gas line
- Basement suite rough-ins
- Separate side entrance
- 9' Foundation

JULY POSSESSION



Plus
RECEIVE YOUR OWN
TRICO RED CARD



AND ENJOY INCREDIBLE ONGOING SAVINGS AND REWARDS FROM OUR PARTNERS AND RETAILERS

VISIT OUR SHOWHOME

337 Dawson Wharf Mount
Chestermere, AB



SHOWHOME THE SPRINGFIELD

Showhome hours:
MON - THURS: 2 - 8PM
FRI: Closed
SAT - SUN: 12 - 5PM



tricohomes.com

Contact Kaylee Pilon
CALL: 587.231.6654
EMAIL: kayleepilon@tricohomes.com

BUILDING IN 31 COMMUNITIES:
FRONT-GARAGE HOMES | LANED HOMES | DUPLEXES | TOWNHOMES | CONDOS

THE SPRINGFIELD

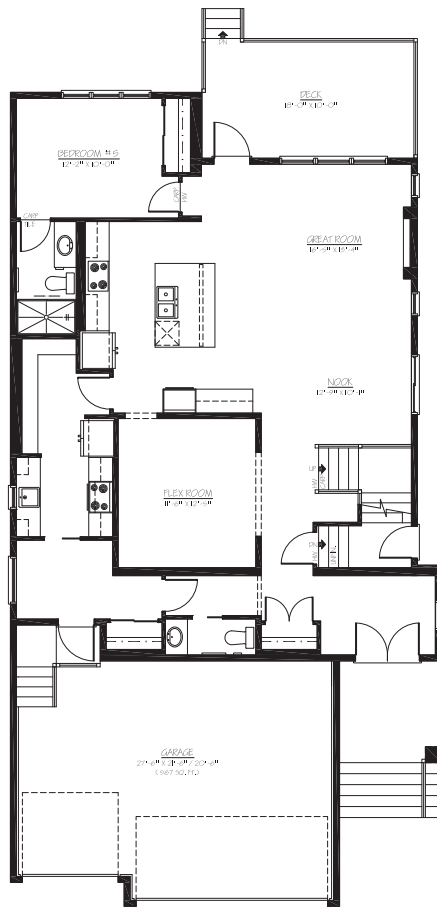
3,265 SQ.FT.



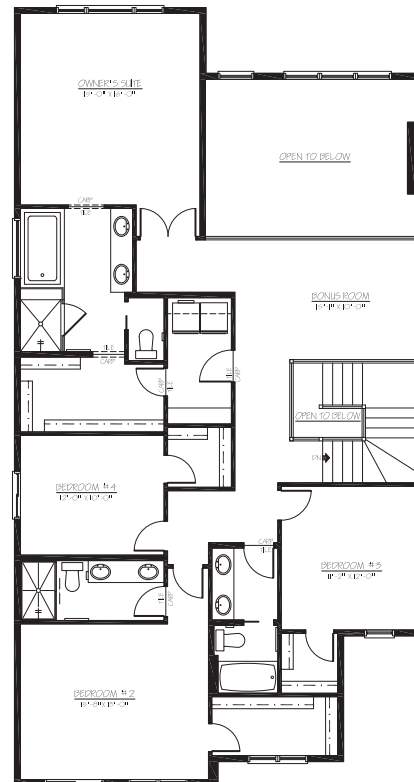
83 Dawson Wharf Mount

5 Bedrooms ▲ 4½ Bathrooms ▲ Triple Garage

JULY POSSESSION



MAIN
1510 SQ.FT



UPPER
1755 SQ.FT



Platinum member
2004 - 2025

Top-rated
Homebuilder



4.4 ★★★★★



tricohomes.com

Renderings are artist's conceptions only and vary by community and lot selection. Prices, floorplans, specifications and dimensions are approximate and are subject to change without notice. E.&OE. ® All rights reserved, including the right if reproduction in the whole or in part without the permission of Trico Homes. Plan updated February 3, 2026

BUILDING IN 31 COMMUNITIES:
FRONT-GARAGE HOMES | LANED HOMES | DUPLEXES | TOWNHOMES | CONDOS