



← 31' →  
Min. Lot Width

 5 Bedroom

 4 Bathrooms

 Double Garage

THE  
**EVERETT** ZLL  
2664 SQ.FT.

Elite Specification

---

---

---

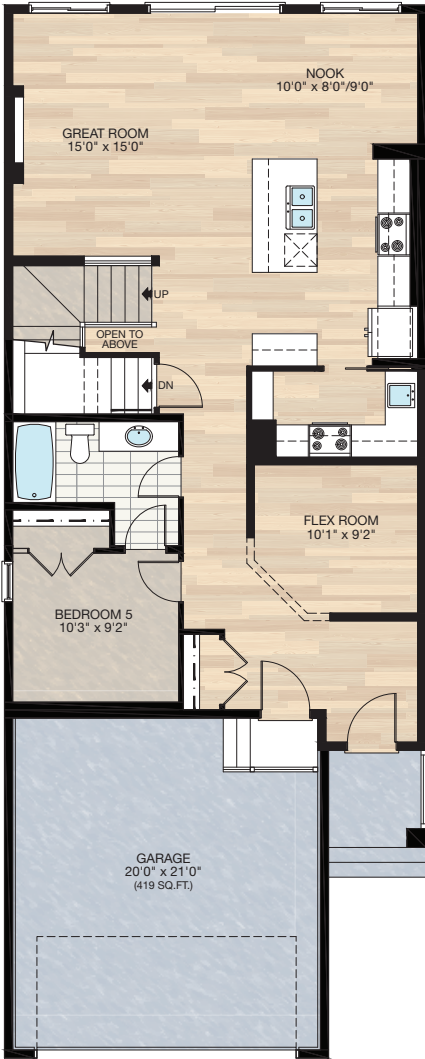


Trico Homes™  
The Heart of Homebuilding®

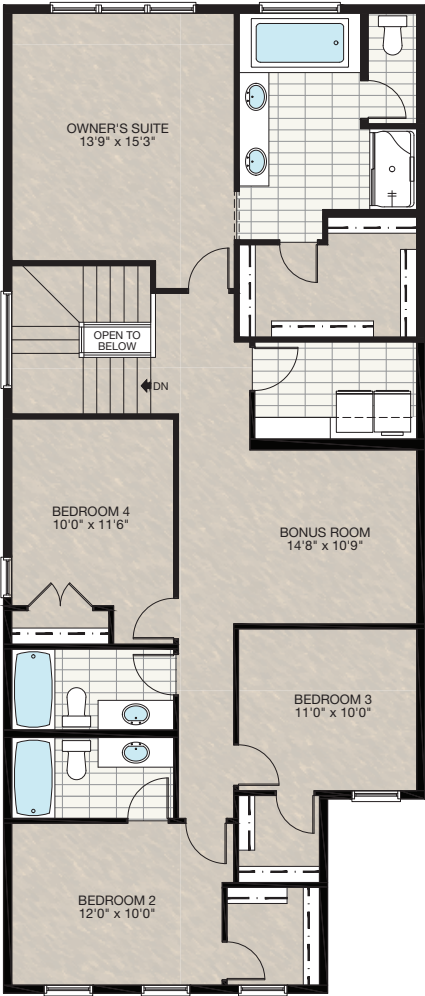
# STANDARD PLAN

## SHORT SIDE ZERO

THE  
EVERETT ZLL  
2664 SQ.FT.



**MAIN**  
1157 SQ.FT.

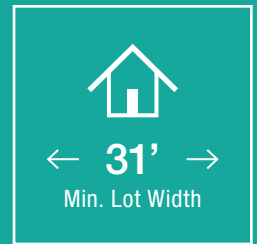


**UPPER**  
1507 SQ.FT.



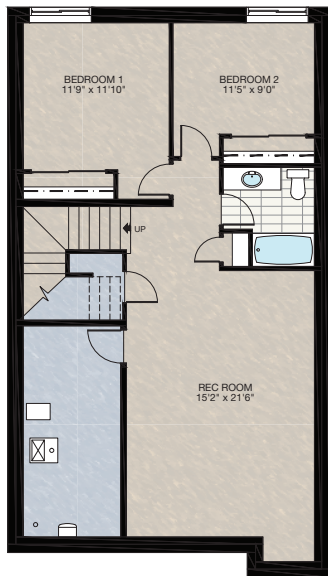
# FEATURED EVERETT OPTIONS

## SHORT SIDE ZERO



### SELECT-1 BASEMENT DEVELOPMENT OPTION (FOR SHORT SIDE ZERO)

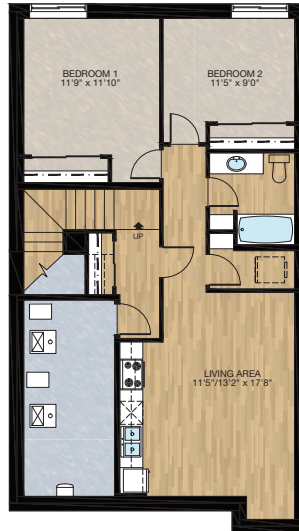
- 829 Sq.Ft. developed area
- Includes finished basement stairwell
- Add 1 riser to stairwell for 9' basement ceiling (8'9" headroom clearance)
- Upgrade 60" x 24" DHSL window to 60" x 36" DHSL window
- Add 60" x 36" DHSL window



### SECONDARY SUITE OPTION 1

- 834 Sq.Ft. Developed area
- Includes finished basement stairwell
- Add 1 riser to stairwell for 9'0" basement ceiling (8'9" headroom clearance)
- Upgrade 60" x 24" DHSL window to 60" x 36" DHSL window
- Add 60" x 36" DHSL window

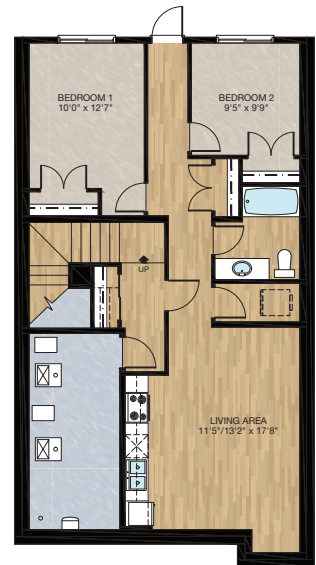
\*Subject to grading max 1 riser permitted. No steps can be added to exterior side entrance



### WALKOUT SECONDARY SUITE OPTION 2

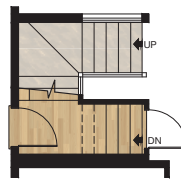
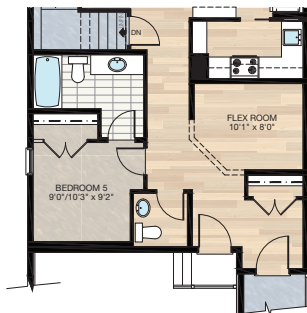
- 851 Sq.Ft. Developed area
- Includes finished basement stairwell
- Add 1 riser to stairwell for 9'0" basement ceiling (8'9" headroom clearance)
- Upgrade 60" x 24" DHSL window to 60" x 36" DHSL window
- Add 60" x 36" DHSL window

\*Subject to grading max 1 riser permitted. No steps can be added to exterior side entrance



### SELECT-2 MAIN FLOOR HALF BATH OPTION (FOR SHORT SIDE ZERO)

- Reduced bedroom #5 to accommodate 1/2 bath space
- Reduced flex room to accommodate foyer closet

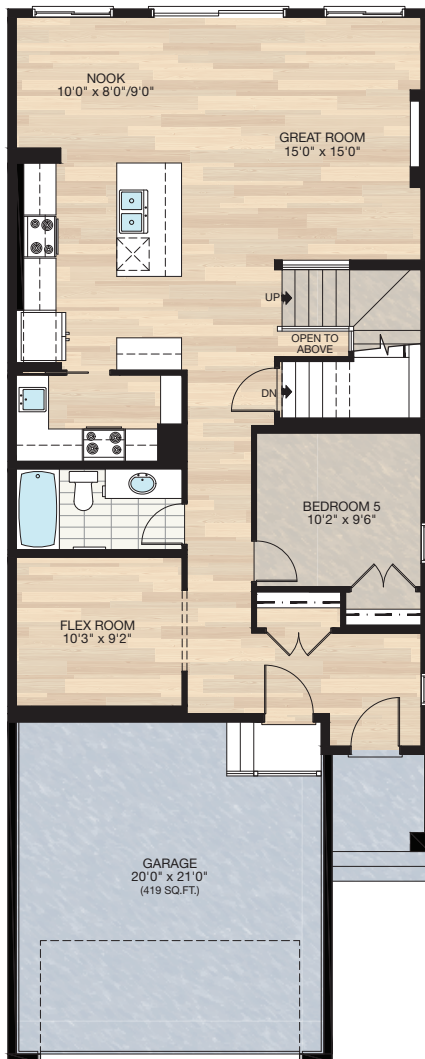


MAIN FLOOR STAIR FOR  
SECONDARY SUITE OPTION 1 & 2

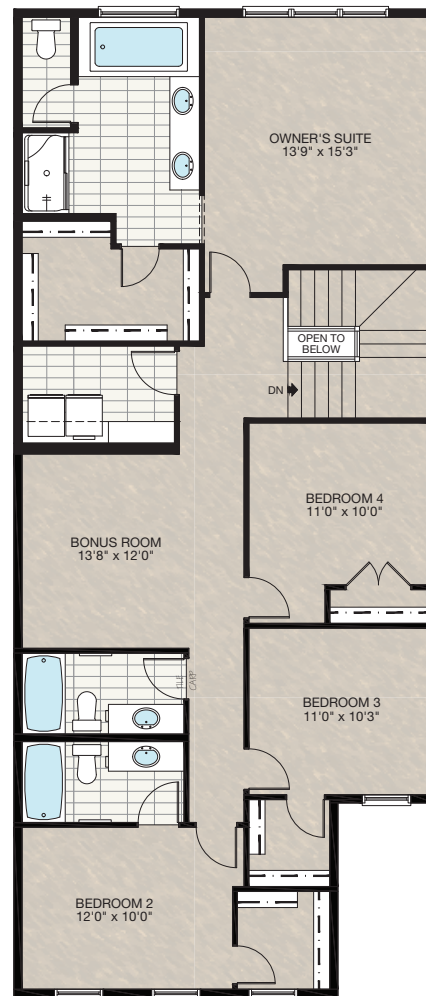


# STANDARD PLAN

## LONG SIDE ZERO



**MAIN**  
1157 SQ.FT.

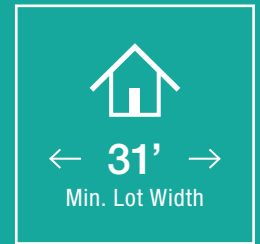


**UPPER**  
1507 SQ.FT.



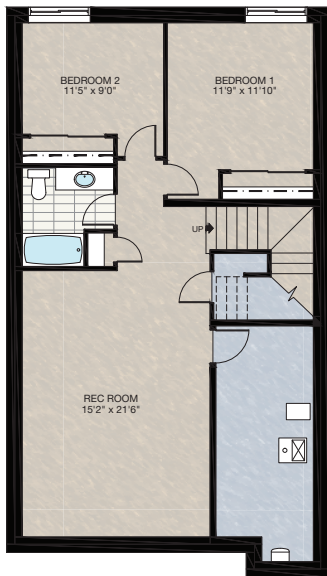
# FEATURED EVERETT OPTIONS

## LONG SIDE ZERO



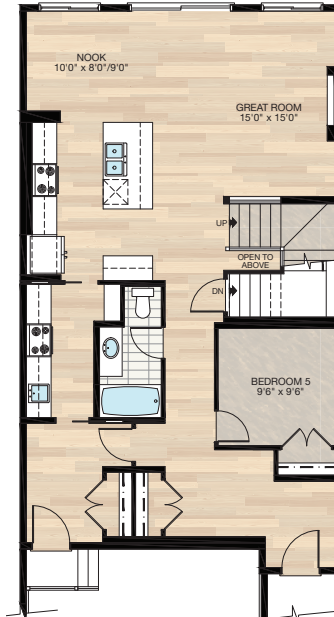
**SELECT-1**  
**BASEMENT DEVELOPMENT OPTION**  
**(FOR LONG SIDE ZERO)**

- 818 Sq.Ft. developed area
- Includes finished basement stairwell
- Add 1 riser to stairwell for 9' basement ceiling (8'9" Headroom clearance)
- Upgrade 60" x 24" DHSL window to 60" x 36" DHSL window
- Add 60" x 36" DHSL window



**SELECT-2**  
**MAIN FLOOR HALF BATH OPTION**  
**(FOR LONG SIDE ZERO)**

- Deleted flex room
- Rearranged main floor bath
- Rearranged spice kitchen
- Rearranged front entry closet
- Added closet to mudroom



# FEATURED EVERETT OPTIONS

## LONG SIDE ZERO

THE  
EVERETT ZLL  
2664 SQ.FT.

### SECONDARY SUITE OPTION 1

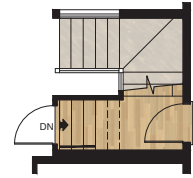
- 824 Sq.Ft. Developed area
- Includes finished basement stairwell
- Add 1 riser to stairwell for 9'0" basement ceiling (8'9" headroom clearance)
- Upgrade 60" x 24" DHSL window to 60" x 36" DHSL window
- Add 60" x 36" DHSL window

\*Subject to grading max 1 riser permitted. No steps can be added to exterior side entrance

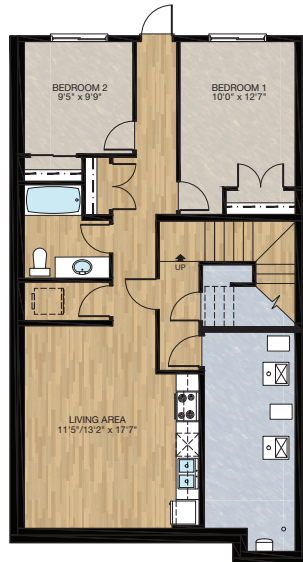
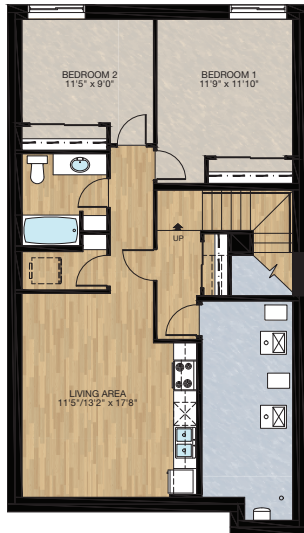
### WALKOUT SECONDARY SUITE OPTION 2

- 824 Sq.Ft. Developed area
- Includes finished basement stairwell
- Add 1 riser to stairwell for 9'0" basement ceiling (8'9" headroom clearance)
- Upgrade 60" x 24" DHSL window to 60" x 36" DHSL window
- Add 60" x 36" DHSL window

\*Subject to grading max 1 riser permitted. No steps can be added to exterior side entrance



MAIN FLOOR STAIR FOR  
SECONDARY SUITE OPTION 1 & 2



Trico Homes is a local home builder, with new single and multi-family homes for sale in Calgary, Okotoks, Chestermere, Cochrane, Airdrie and DeWinton. Offering a great selection of starter, move-up, semi-estate and ultra-estate models in numerous communities, you'll find the house that's just right for you! Look for this model and many others in Ambleton, Ambleridge, Belmont, Chelsea, Colours of Seton Townhomes, Cornerbrook, Creekview, D'Arcy, Damkar Court, Dawson's Landing, Glacier Ridge, Heartwood, Homestead, Huxley, Legacy, Pine Creek, Rivercrest, Rose Ranch, Seton, Sirocco, Spring Valley, Vantage Rise, Vantage Rise Street Towns, Verona North Townhomes, Wentworth, West83 Townhomes, West Springs and Wolf Willow.



Renderings are artist's conceptions only and may vary by community and lot selection. Prices, floorplans, specifications and dimensions are approximate and are subject to change without notice. E.&O.E. © All rights reserved, including the right of reproduction in the whole or in part without the permission of Trico Homes.

Plan updated as of April 6, 2026



tricohomes.com