

THE JAMIESON

1,717 SQ.FT.



213 Bridgeport Gate

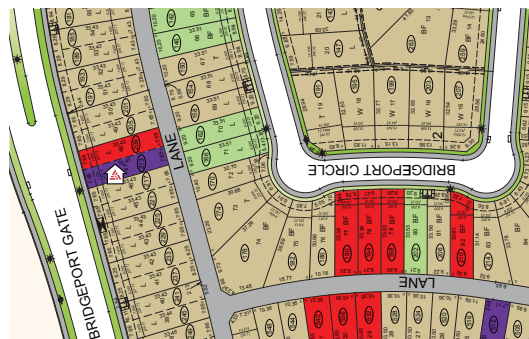
4 Bedrooms ▲ 3 Bathrooms

IMMEDIATE POSSESSION



OPTIONS INCLUDED IN THIS HOME

- South-facing backyard across future school site & play field, with quick access to Chestermere Blvd
- Main floor bedroom & full bathroom
- Kitchen appliances & washer/dryer included
- Chimney hood fan above range
- Central bonus room on upper floor
- Spacious walk-in closet
- 4-Piece owner's ensuite with dual vanities & tile & glass shower
- 9' Foundation
- Rear deck with stairs to grade
- Concrete parking pad & paved lane



VISIT OUR SHOWHOMES

THE MCKINNEY & THE RAEYA

541 & 545 Bridgeport Street
Chestermere, AB

SHOWHOME HOURS:

MON - THURS: 2 - 8PM

FRI: Closed

SAT - SUN: 12 - 5PM

Contact May Vallo

CALL: 403.453.4513

EMAIL: mayvallo@tricohomes.com

Plus
RECEIVE YOUR OWN
TRICO RED CARD



AND ENJOY INCREDIBLE ONGOING SAVINGS AND
REWARDS FROM OUR PARTNERS AND RETAILERS



 **Trico**
Homes™
tricohomes.com

BUILDING IN 31 COMMUNITIES:

FRONT-GARAGE HOMES | LANED HOMES | DUPLEXES | TOWNHOMES | CONDOS

THE JAMIESON

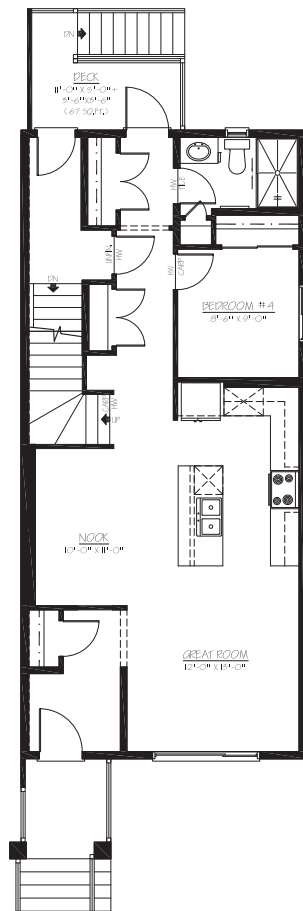
1,717 SQ.FT.



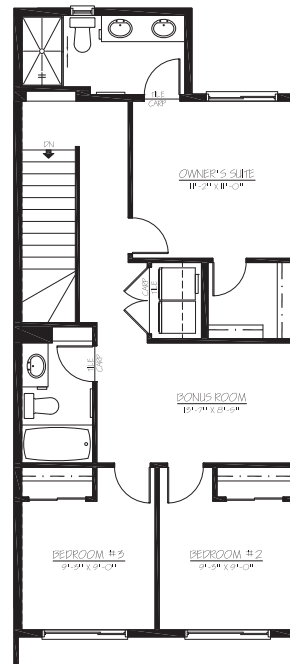
213 Bridgeport Gate

4 Bedrooms ▲ 3 Bathrooms

IMMEDIATE POSSESSION



MAIN
881 SQ.FT



UPPER
836 SQ.FT



Platinum member
2004 - 2025

Top-rated
Homebuilder



4.4 ★★★★★



tricohomes.com

Renderings are artist's conception only and vary by community and lot selection. Prices, floorplans, specifications and dimensions are approximate and are subject to change without notice. E.&O.E. All rights reserved, including the right if reproduction in the whole or in part without the permission of Trico Homes. Plan updated May 14, 2026

BUILDING IN 31 COMMUNITIES:
FRONT-GARAGE HOMES | LANED HOMES | DUPLEXES | TOWNHOMES | CONDOS