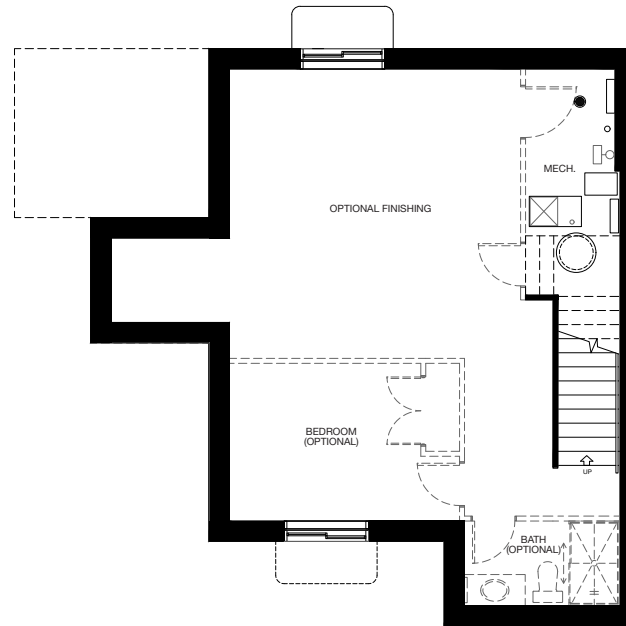


**PEREGRINE**

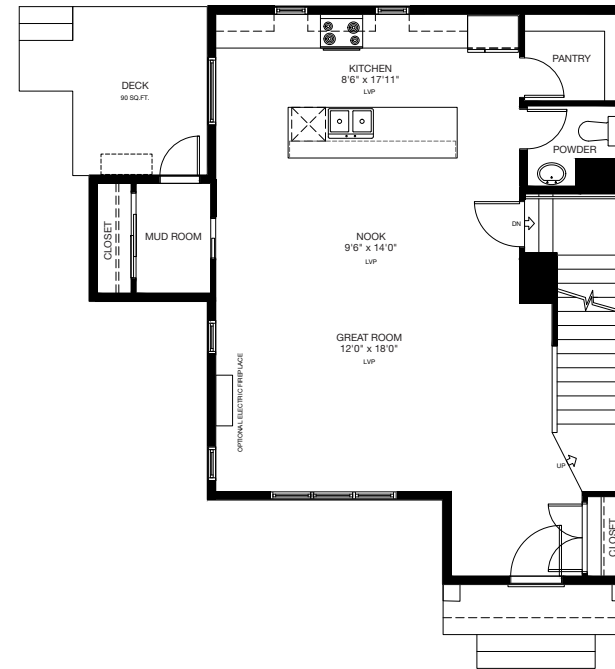
**SPECIAL LAYOUT**

3 Bed 2½ Bath

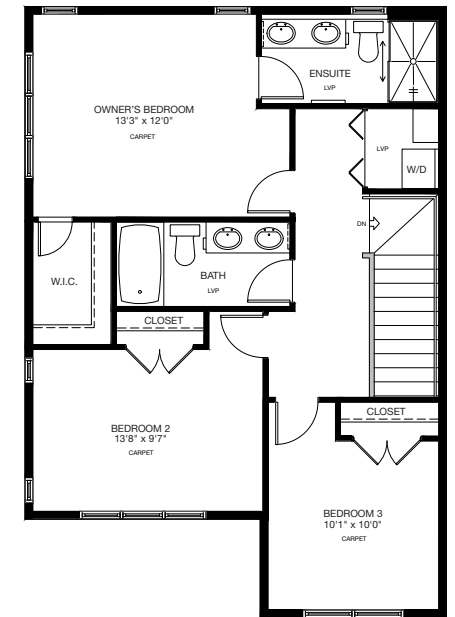
1,602 Sq.Ft.



**BASEMENT**  
Finished Area: 792 Sq.Ft.



**MAIN FLOOR**  
Finished Area: 833 Sq.Ft.



**UPPER FLOOR**  
Finished Area: 769 Sq.Ft.

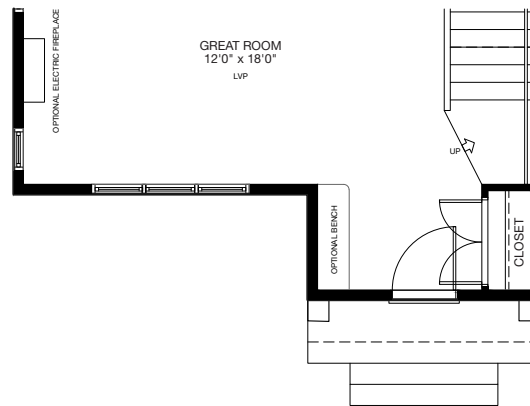
\* Floorplan is an artist concept only and may be subject to change without notice. Builder reserves the right to make modifications and changes to building design, specifications, features and floorplans without notice. Measurements and areas shown are based on pre-construction estimates and are approximate only. E.&O.E. Windows locations and sizes on these renderings are dependent on building location and elevation as approved by the City of Calgary, confirm with your sales representative exact locations. VANTRST-30895 Floorplan Insert Sheets v13.

**PEREGRINE**

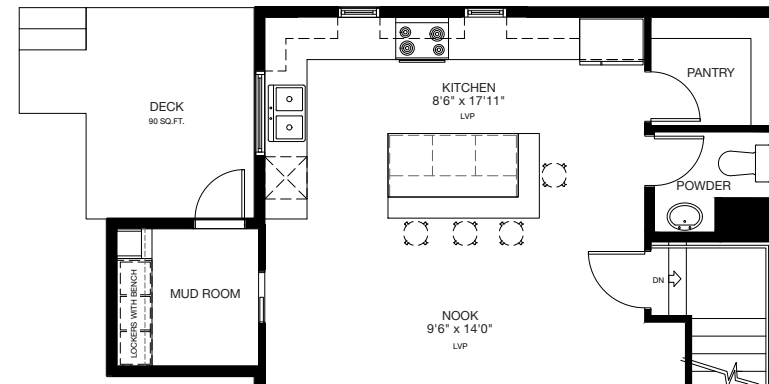
**SPECIAL LAYOUT**

3 Bed 2½ Bath

1,602 Sq.Ft.



**PEREGRINE**  
Bench at Entry Option



**PEREGRINE**  
L-shape Kitchen Option

\* Floorplan is an artist concept only and may be subject to change without notice. Builder reserves the right to make modifications and changes to building design, specifications, features and floorplans without notice. Measurements and areas shown are based on pre-construction estimates and are approximate only. E.&O.E. Windows locations and sizes on these renderings are dependent on building location and elevation as approved by the City of Calgary, confirm with your sales representative exact locations. VANTRST-30895 Floorplan Insert Sheets v13.