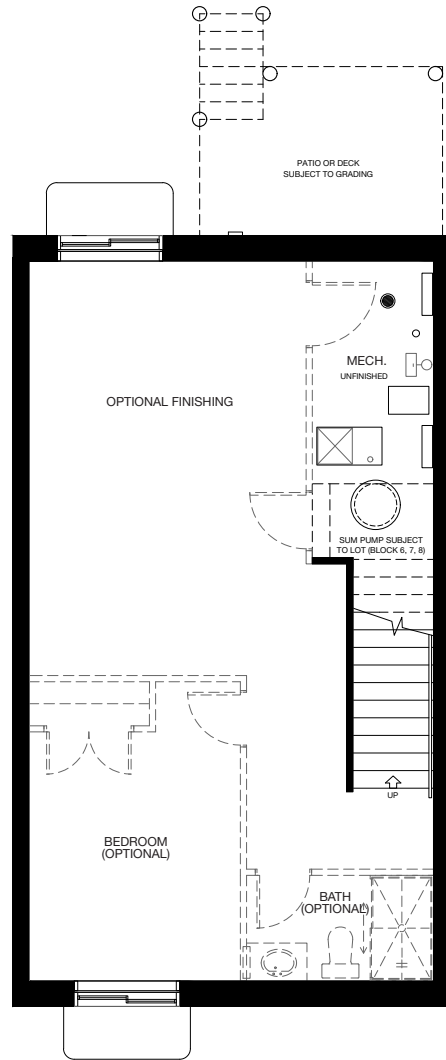


SPARROW

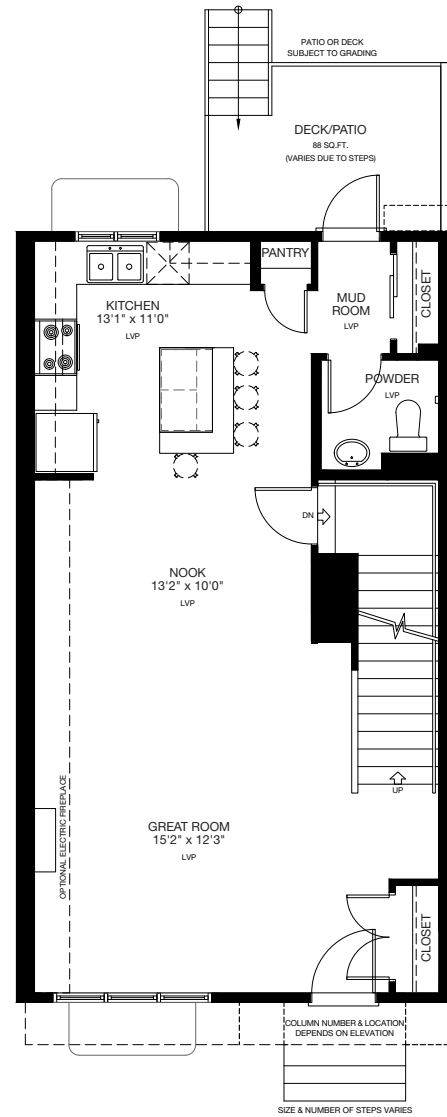
MID UNIT

3 Bed 2½ Bath

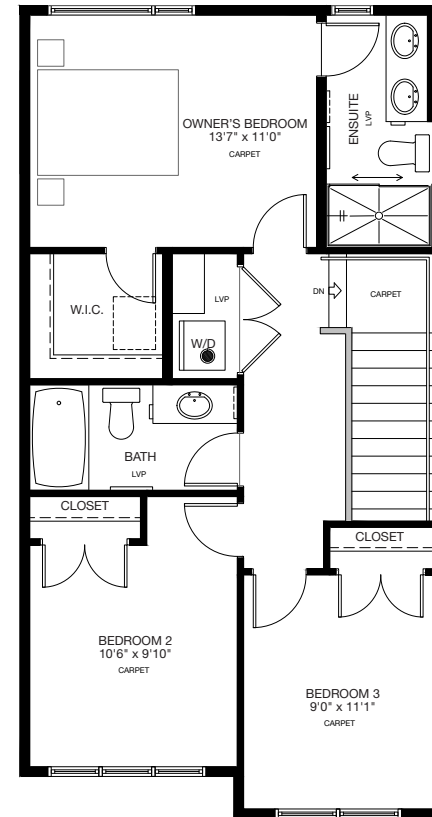
1,420 Sq.Ft.



BASEMENT
Finished Area: 641 Sq.Ft.



MAIN FLOOR
Finished Area: 730 Sq.Ft.



UPPER FLOOR
Finished Area: 690 Sq.Ft.

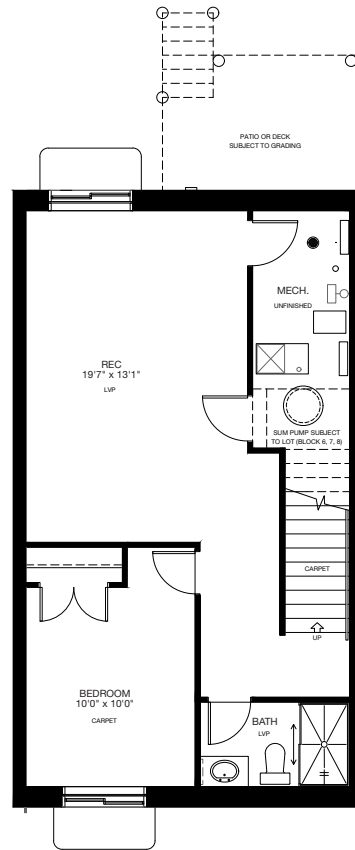
* Floorplan is an artist concept only and may be subject to change without notice. Builder reserves the right to make modifications and changes to building design, specifications, features and floorplans without notice. Measurements and areas shown are based on pre-construction estimates and are approximate only. E.&O.E. Windows locations and sizes on these renderings are dependent on building location and elevation as approved by the City of Calgary, confirm with your sales representative exact locations. VANTRST-30895 Floorplan Insert Sheets v13.

SPARROW

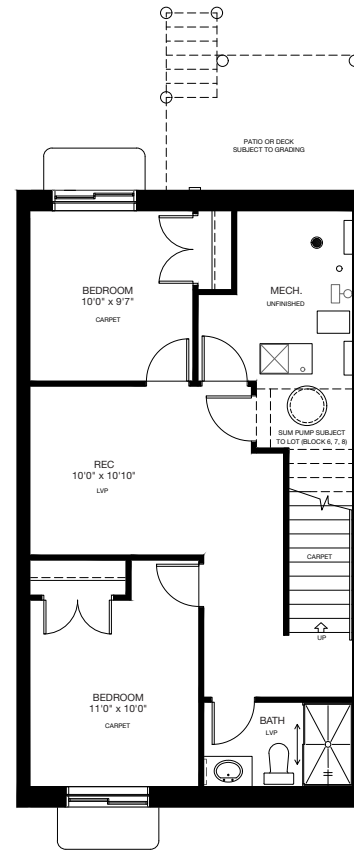
OPTIONAL LAYOUTS

3 Bed 2½ Bath

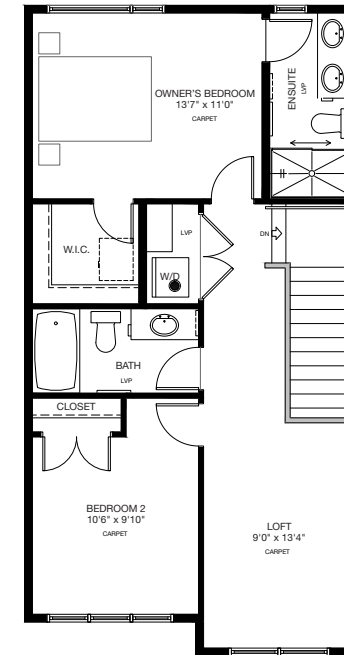
1,420 Sq.Ft.



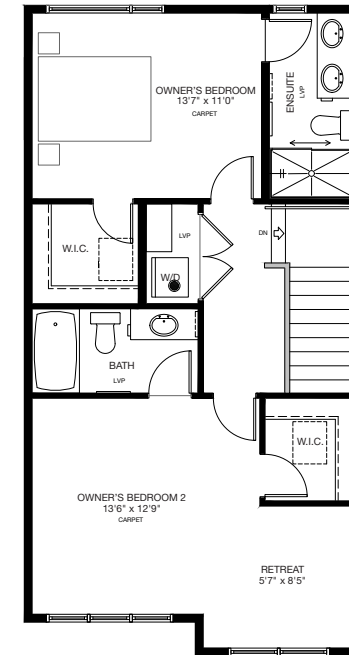
BASEMENT OPTION
1 Bedroom



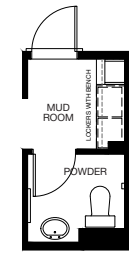
BASEMENT OPTION
2 Bedrooms



UPPER FLOOR
2 Bedroom + Loft



UPPER FLOOR
Dual Ensuite Layout



MAIN FLOOR
Optional Lockers with Bench

* Floorplan is an artist concept only and may be subject to change without notice. Builder reserves the right to make modifications and changes to building design, specifications, features and floorplans without notice. Measurements and areas shown are based on pre-construction estimates and are approximate only. E.&O.E. Windows locations and sizes on these renderings are dependent on building location and elevation as approved by the City of Calgary, confirm with your sales representative exact locations. VANTRST-30895 Floorplan Insert Sheets v13.