

# THE SPRINGHILL

2,664 SQ.FT.

**CHELSEA**  
CHESTERMERE

11 Chelsea Port Link

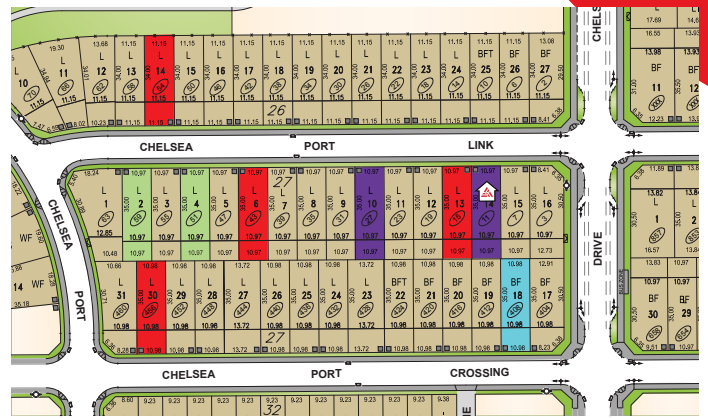
5 Bedrooms ▲ 4 Bathrooms ▲ Double-Garage

FALL POSSESSION



## OPTIONS INCLUDED IN THIS HOME:

- South facing backyard near parks & pathways
- Main floor bedroom & full bathroom with standing shower
- Main floor flex room
- Spice kitchen
- Quartz countertops in kitchen
- Stainless steel appliances in kitchen
- 4 Bedrooms & central bonus room on upper floor
- Dual ensuite layout on upper floor
- Electric fireplace in great room
- Spindle railing throughout
- 5 Piece owner's ensuite with upgraded tiled shower, corner soaker tub & his & her's sinks
- Basement rough-ins for future secondary suite
- Rear deck with aluminum railing & stairs to grade
- 9' Foundation



*Plus*  
**RECEIVE YOUR OWN  
TRICO RED CARD**



**& ENJOY INCREDIBLE ONGOING SAVINGS & REWARDS FROM OUR PARTNERS & RETAILERS**

## VISIT OUR SHOWHOMES

408 Chelsea Port Crossing  
Chestermere, AB



THE CAMBRIDGE 28

### Showhome Hours:

**MON - THURS:** 2PM - 8PM  
**FRI:** Closed  
**SAT - SUN:** 12PM - 5PM

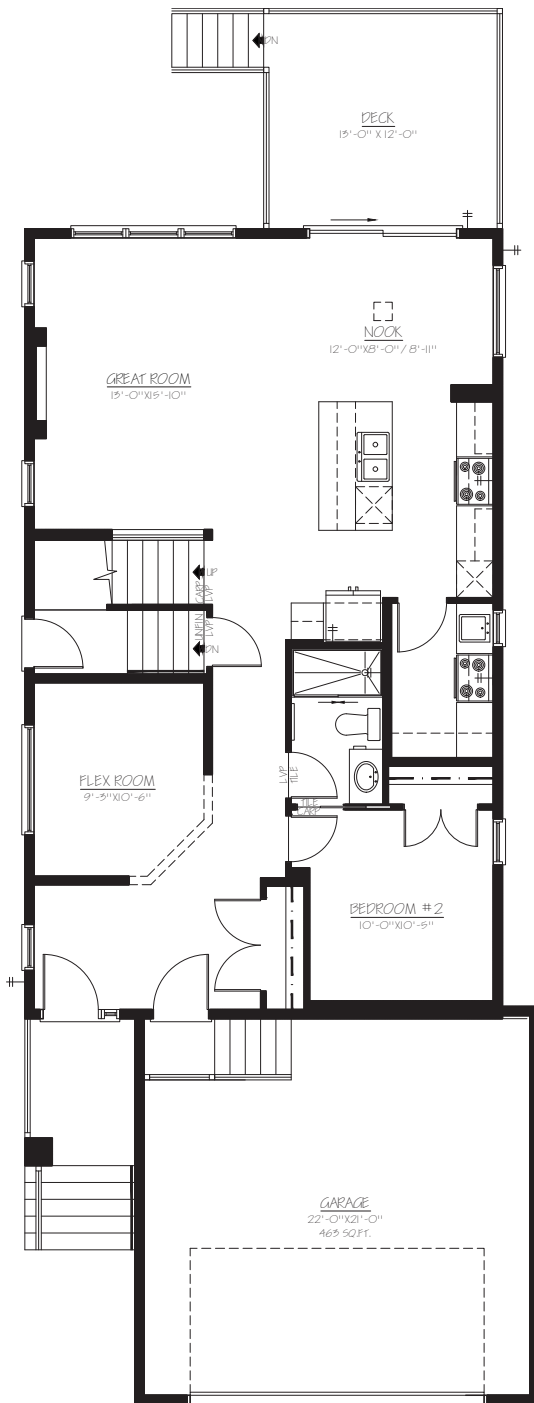
Contact **Kaylee Pilon**

**CALL:** 403.862.6702 | **EMAIL:** kayleepilon@tricohomes.com

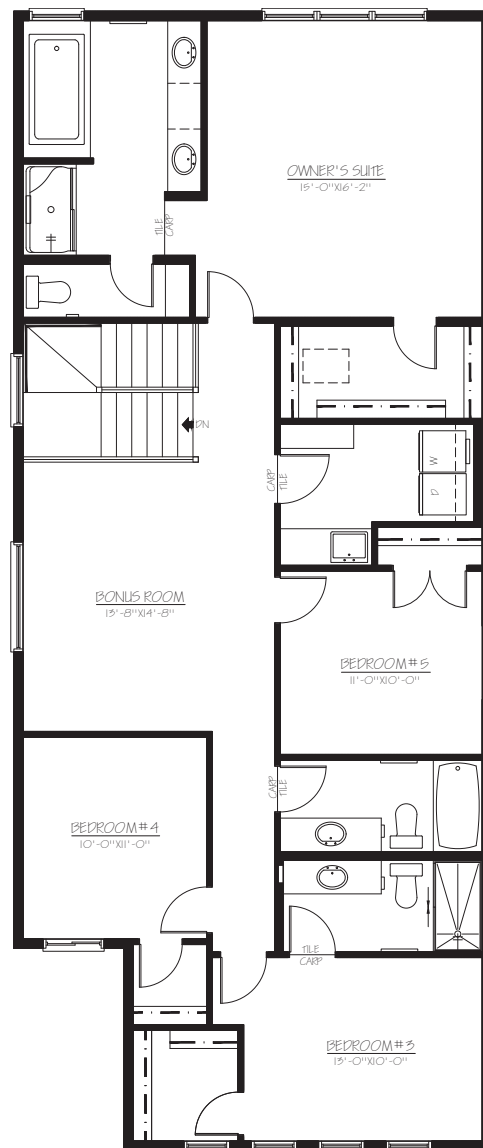


Trico Homes™  
tricohomes.com

**MAIN**  
1118 SQ.FT.



**UPPER**  
1546 SQ.FT.



Renderings are artist's conceptions only and may vary by community and lot selection. Prices, floorplans, specifications and dimensions are approximate and are subject to change without notice. E.&O.E. © All rights reserved, including the right if reproduction in the whole or in part without the permission of Trico Homes. Plan updated April 21, 2026.



tricohomes.com