

THE RAEYA ZLL

1,802 SQ.FT.



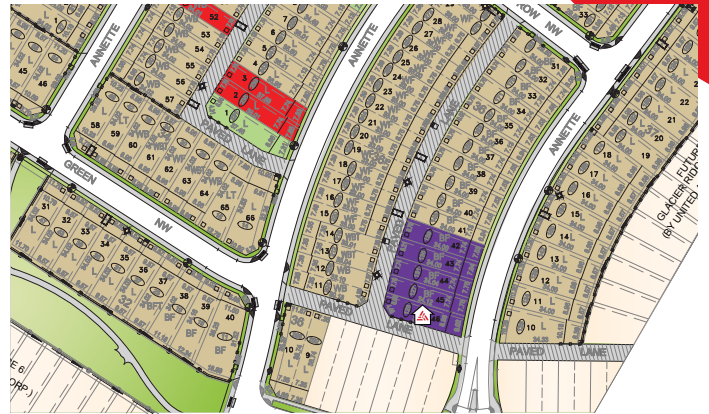
123 Annette Landing NW

3 Bedrooms ▲ 3 Bathrooms



OPTIONS INCLUDED IN THIS HOME:

- Corner homesite near parks & pathways
- Main floor flex room & full bathroom with standing shower
- L-shaped kitchen
- LED lights under kitchen cabinets
- Upper floor central bonus room
- Full laundry room
- His & her's sinks in owner's ensuite
- Basement suite with rough-ins & 2 windows
- Separate rear basement entrance
- Rear deck with stairs to grade
- 9' Foundation



Plus
RECEIVE YOUR OWN
TRICO RED CARD



& ENJOY INCREDIBLE ONGOING SAVINGS & REWARDS FROM OUR PARTNERS & RETAILERS

VISIT OUR SHOWHOMES

170 & 174 Mitchell Road NW
Calgary, AB



THE RAEYA



THE SANDALWOOD

Showhome Hours:

MON - THURS: 2PM - 8PM
FRI: Closed
SAT - SUN: 12PM - 5PM

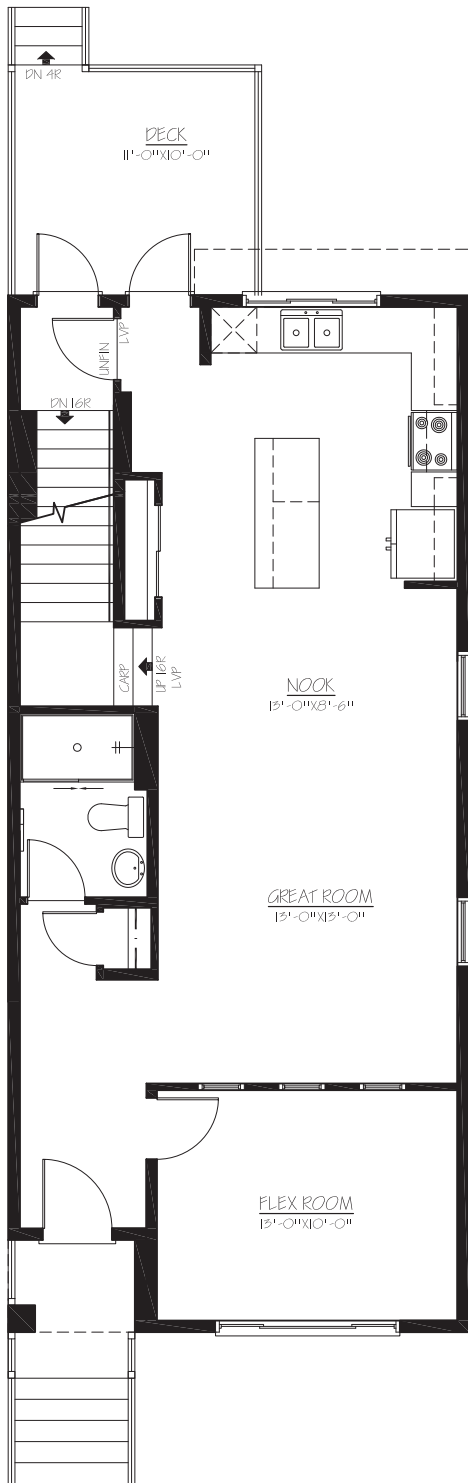
Contact **Justin Rampersad**

CALL: 852.540.2946 | **EMAIL:** justinrampersad@tricohomes.com

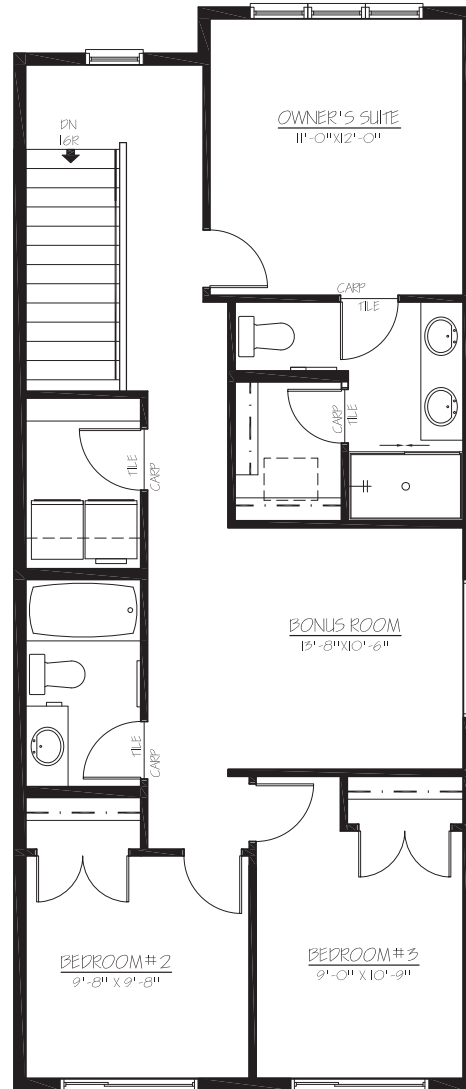


Trico Homes™
tricohomes.com

MAIN
878 SQ.FT.



UPPER
924 SQ.FT.



Renderings are artist's conceptions only and may vary by community and lot selection. Prices, floorplans, specifications and dimensions are approximate and are subject to change without notice. E.&OE. © All rights reserved, including the right if reproduction in the whole or in part without the permission of Trico Homes. TC-30744 Plan updated Mar 31, 2026.



tricohomes.com