

THE LAWSON ZLL

2,586 SQ.FT.



GLACIER RIDGE

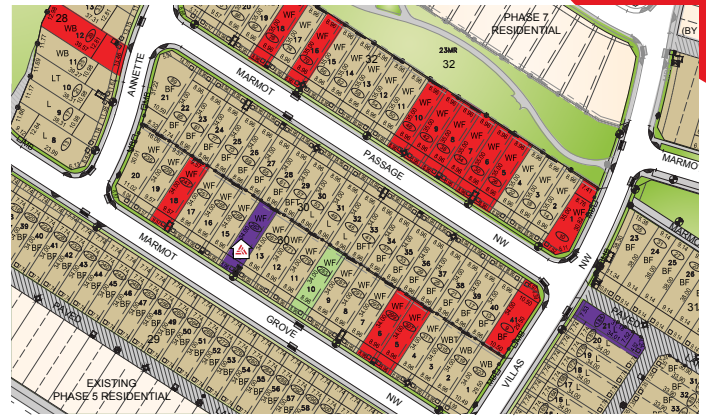
263 Marmot Grove NW

5 Bedrooms ▲ 4 Bathrooms ▲ Double-Garage



OPTIONS INCLUDED IN THIS HOME:

- Walk-out homesite near parks & pathways
- Main floor bedroom & full bathroom with standing shower
- Main floor flex room
- Spice kitchen
- Built-in appliances & quartz countertops in kitchen
- Stainless steel built-in appliances in kitchen
- 4 Bedrooms & central bonus room on upper floor
- Extended great room with electric fireplace
- Full laundry room
- 5 Piece owner's ensuite with upgraded tiled shower, corner soaker tub & his & her's sinks
- Walk-out basement with rough-ins
- 24' x 10' Rear deck with aluminum railing
- 9' Foundation



Plus
RECEIVE YOUR OWN
TRICO RED CARD



& ENJOY INCREDIBLE ONGOING SAVINGS & REWARDS FROM OUR PARTNERS & RETAILERS

VISIT OUR SHOWHOMES

177 & 181 Mitchell Road NW
Calgary, AB



THE CONCORD



THE OXFORD II

Showhome Hours:

MON - THURS: 2PM - 8PM
FRI: Closed
SAT - SUN: 12PM - 5PM

Contact Justin Rampersad

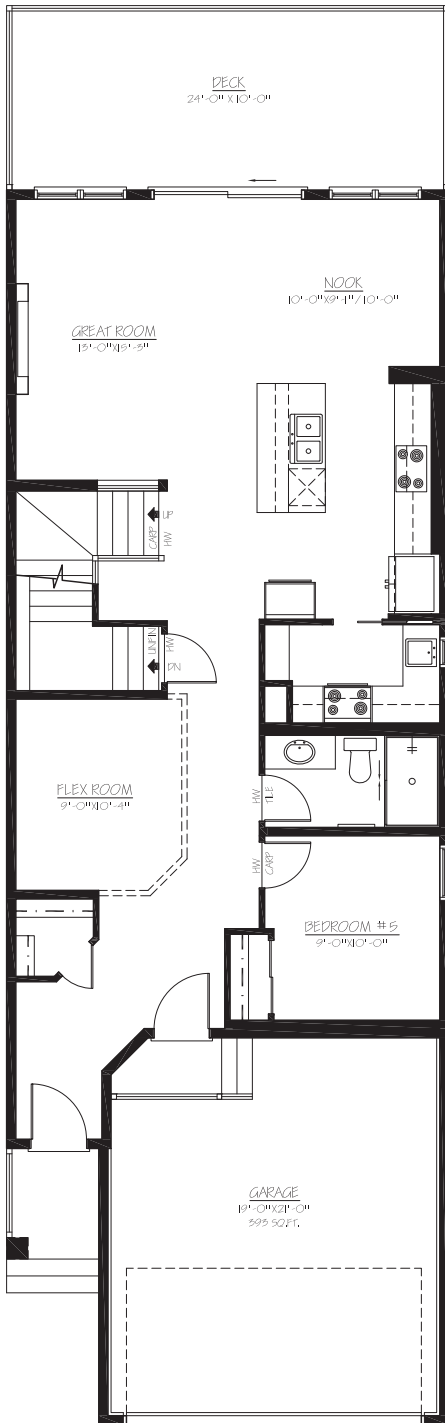
CALL: 852.540.2954 | EMAIL: justinrampersad@tricohomes.com



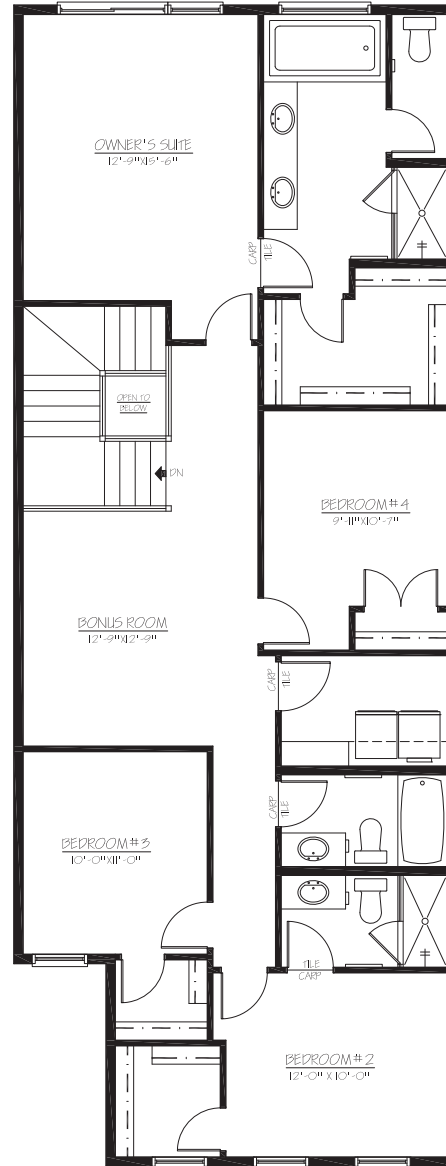
Trico Homes™

tricohomes.com

MAIN
1140 SQ.FT.



UPPER
1446 SQ.FT.



Renderings are artist's conceptions only and may vary by community and lot selection. Prices, floorplans, specifications and dimensions are approximate and are subject to change without notice. E.&O.E. © All rights reserved, including the right if reproduction in the whole or in part without the permission of Trico Homes. Plan updated April 7, 2026.



trichomes.com