

  
← 23' →  
Min. Lot Width

 3 Bedroom

 2½ Bathrooms

# THE MEADOW ZLL

1643 SQ.FT.

Elements Specification

---

---

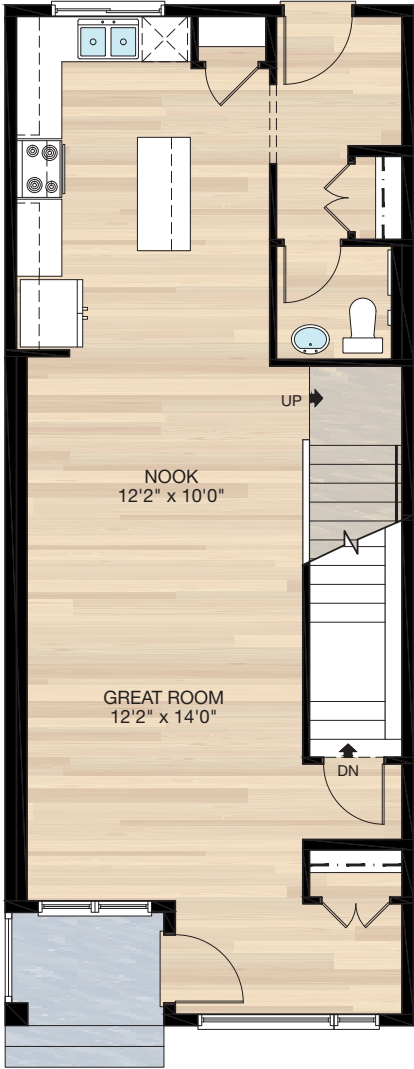
---



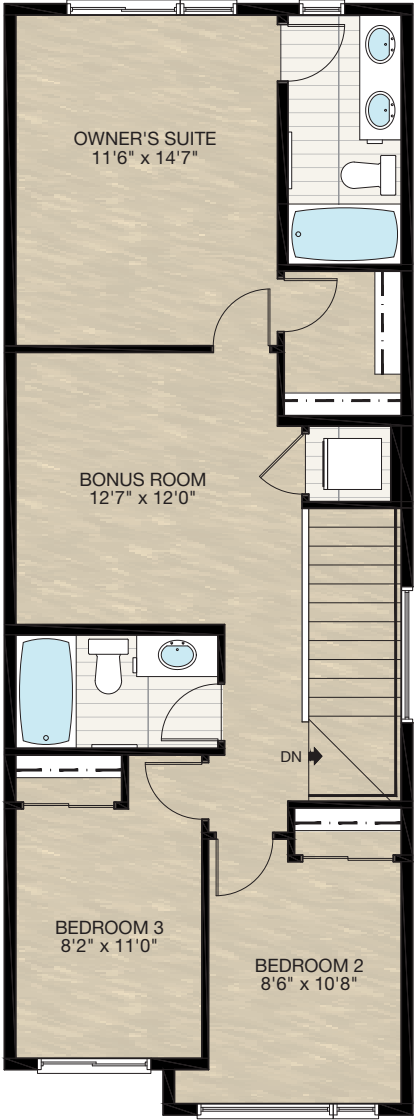
Trico Homes™  
The Heart of Homebuilding®

# STANDARD PLAN

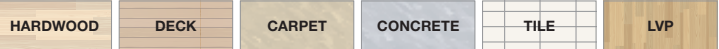
THE  
MEADOW ZLL  
1643 SQ.FT.



**MAIN**  
775 SQ.FT.



**UPPER**  
868 SQ.FT.

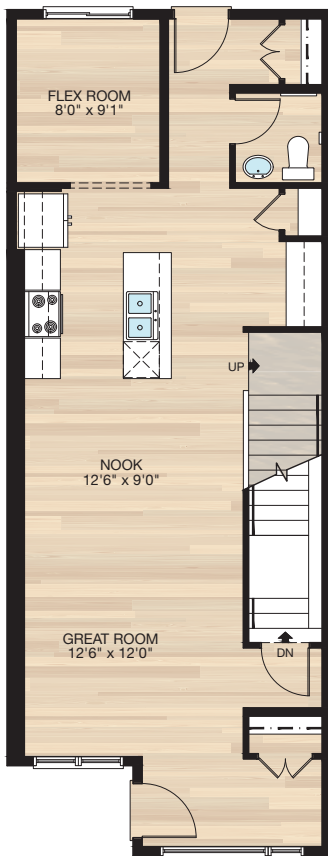


# FEATURED OPTIONS



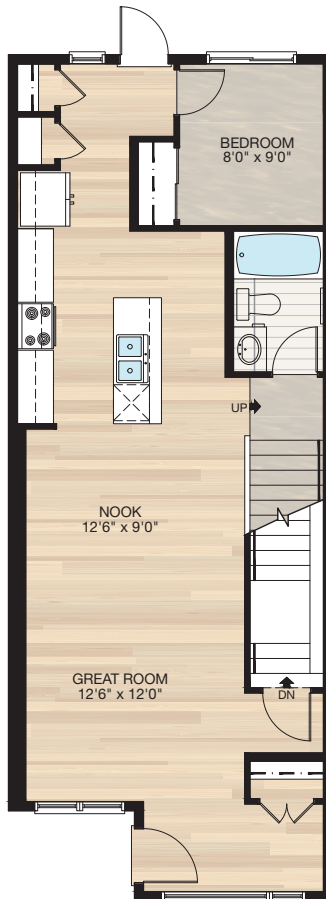
## SELECT-1 MAIN FLOOR FLEX ROOM OPTION

- 18'0" x 2'0" Rear extension including foundation
- Additional 36 Sq.Ft. to main floor
- Modified kitchen layout



## SELECT-2 MAIN FLOOR BEDROOM WITH FULL BATH OPTION

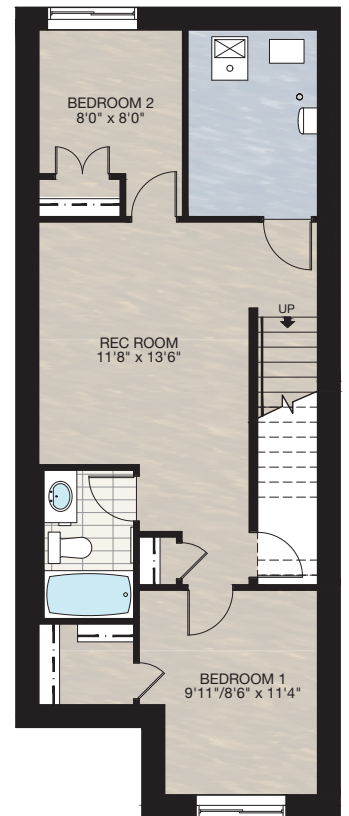
- 18'0" x 2'0" Rear extension including foundation
- Additional 36 Sq.Ft. to main floor
- Built-up bathroom floor to be flush with stir landing
- Modified kitchen layout
- Add 24" x 72" VSL window to rear
- Delete 3' front exterior door to rear
- Add 2'8" front exterior door to rear



## SELECT-3 BASEMENT DEVELOPMENT OPTION 1

- 550 Sq.Ft. Basement development
- Includes finished basement stairwell
- Move 2'8" passage door from top of stairwell to mechanical room
- Add 2 risers to stairwell for 9' basement ceiling (8'9" headroom clearance)
- Upgrade 60" x 24" DHSL window to 60" x 36" DHSL window & move window to front
- Add 60" x 36" DHSL window to rear
- Beam added to bearing wall

\*Must be combined with **Standard main floor**



# FEATURED OPTIONS

THE  
MEADOW ZLL  
1643 SQ.FT.

## SELECT-4 BASEMENT DEVELOPMENT OPTION 2

- 583 Sq.Ft. Basement development
- Includes finished basement stairwell
- Move 2'8" passage door from top of stairwell to mechanical room
- Add 2 risers to stairwell for 9'0" basement ceiling (8'9" headroom clearance)
- Upgrade 60" x 24" DHSL window to 60" x 36" DHSL window & move window to front
- Add 40" x 40" DHSL window to rear
- Beam added to bearing wall

\*Must be combined with **Select 1** or **Select 2**.

## SECONDARY SUITE OPTION 1

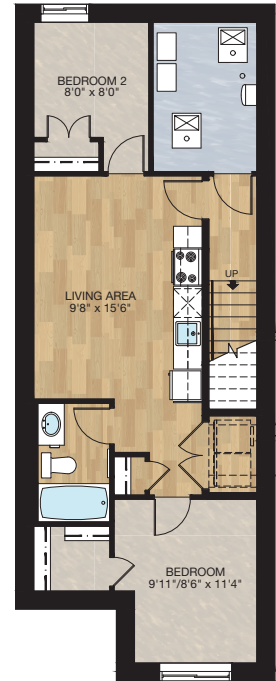
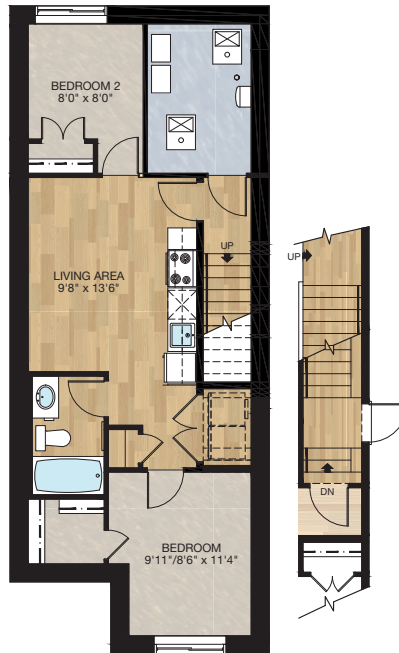
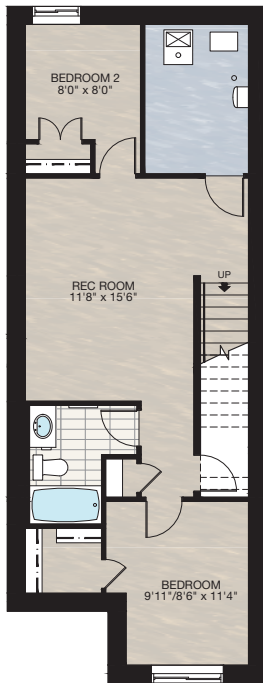
- 573 Sq.Ft. Basement development
- Includes finished basement stairwell
- Add 2'8" side entry door & exterior light at stairwell
- Upgraded stairwell switches from 3-way to 4-way
- Add 2 risers to stairwell for 9'0" basement ceiling (8'9" headroom clearance)
- Upgrade 60" x 24" DHSL window to 60" x 36" DHSL window
- Add 60" x 36" DHSL window to rear
- Washer & dryer rough-in only

\*Must be combined with **Standard main floor**.

## SECONDARY SUITE OPTION 2

- 606 Sq.Ft. Basement development
- Includes finished basement stairwell
- Add 2'8" side entry door & exterior light at stairwell
- Upgraded stairwell switches from 3-way to 4-way
- Add 2 risers to stairwell for 9'0" basement ceiling (8'9" headroom clearance)
- Upgrade 60" x 24" DHSL window to 60" x 36" DHSL window
- Add 60" x 36" DHSL window to rear
- Washer & dryer rough-in only

\*Must be combined with **Select 1** or **Select 2**.



Trico Homes is a local home builder, with new single and multi-family homes for sale in Calgary, Okotoks, Chestermere, Cochrane, Didsbury, Spring Bank and Airdrie. Offering a great selection of starter, move-up, semi-estate and estate models in numerous communities, you'll find the house that's just right for you! Look for this model and many others in Ambleton, Ambleridge, Belmont, Bridgeport, Chelsea, Chelsea Court Townhomes, Coach & Gable Street Towns, Cornerbrook, Creekview, D'Arcy, Damkar Court, Dawson's Landing, Glacier Ridge, Heartwood, Homestead, Huxley, Legacy, Pine Creek, Rivercrest, Rose Ranch, Seton, Sirocco, Southbow Landing, Spring Valley, Summit Condos, Vantage Rise, Foxtail Street Towns, Verona North Townhomes, Wentworth South, West83 Townhomes, and Wolf Willow.



Renderings are artist's conceptions only and may vary by community and lot selection. Prices, floorplans, specifications and dimensions are approximate and are subject to change without notice. E.&O.E. © All rights reserved, including the right if reproduction in the whole or in part without the permission of Trico Homes.

Plan updated as of April 27, 2026



tricohomes.com